

4

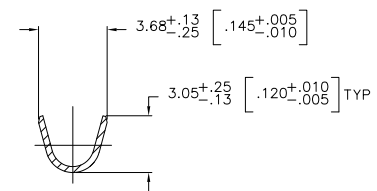
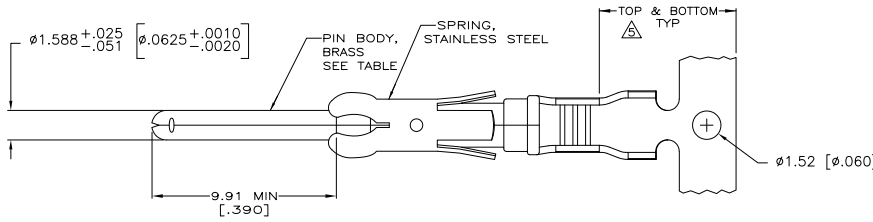
3

2

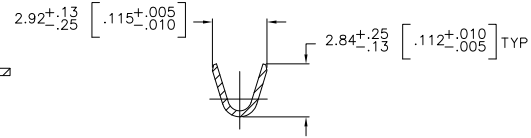
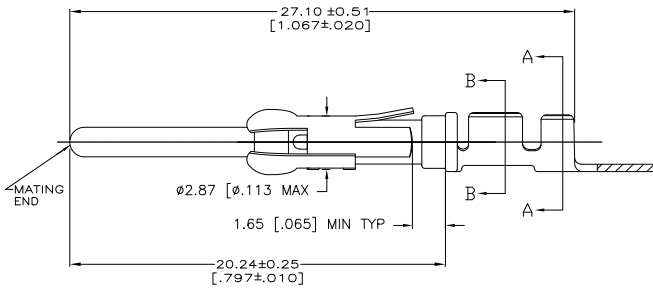
1

THIS DRAWING IS UNPUBLISHED. RELEASED FOR PUBLICATION. ALL RIGHTS RESERVED.

| LOC |    | DIST |    | REVISIONS                 |         |     |     |
|-----|----|------|----|---------------------------|---------|-----|-----|
| FT  | 47 | F    | LR | DESCRIPTION               | DATE    | MIN | APD |
|     |    | AF1  |    | REVISED PER ECO-11-004587 | 11MAR11 | RK  | HMR |



SECTION A-A



SECTION B-B

- ▲ REVERSE REELED FOR MINI-APPLICATOR.
- ▲ 0.76µm [.000030] MIN PRECIOUS METAL PLATE ON MATING END FOR A LENGTH OF 5.08 [.200] MIN OVER 1.27µm [.000050] MIN NICKEL PLATE. GOLD FLASH ALL OVER, CONFORMS TO THE REQUIREMENTS OF TE CONNECTIVITY ELECTRONICS PRODUCT SPEC 108-10042, BASED ON EIA/ECA-364-1000.01A ( CONTROLLED ENVIRONMENT APPLICATIONS ).
- ▲ 0.76µm [.000030] MIN PRECIOUS METAL PLATE ON MATING END FOR A LENGTH OF 5.08 [.200] MIN WITH A UNIFORM GRADIENT TO 0.25µm [.000010] ON REMAINDER, OVER 1.27µm [.000050] MIN NICKEL PLATE. GOLD FLASH ALL OVER, CONFORMS TO THE REQUIREMENTS OF TYCO ELECTRONICS PRODUCT SPEC 108-10042, BASED ON EIA/ECA-364-1000.01A ( CONTROLLED ENVIRONMENT APPLICATIONS ).
- ▲ 0.38µm [.000015] MIN GOLD PER MIL-G-45204 ON MATING END FOR A LENGTH OF 5.08 [.200] MIN WITH GOLD FLASH ON THE REMAINDER OVER 1.27µm [.000050] MIN NICKEL PER QQ-N-290.
- ▲ GOLD PLATING NEED NOT APPEAR IN THIS AREA.
- ▲ 1.27µm [.000050] MIN TIN-LEAD PER MIL-T-10727 OVER 1.27µm [.000050] MIN NICKEL PER QQ-N-290.
- 7. WIRE RANGE 18-16 AWG.
- 8. INSULATION RANGE 2.03[.080]-2.54[.100] DIA.
- ▲ 0.38µm [.000015] MIN GOLD PER MIL-G-45204 ON MATING END FOR A LENGTH OF 5.08 [.200] MIN, 1.27µm [.000050] MIN TIN-LEAD PER MIL-T-10727 ON OPPOSITE END FOR A LENGTH OF 5.69 [.224] MIN, BOTH OVER 1.27µm [.000050] MIN NICKEL PER QQ-N-290.
- ▲ 1.27µm [.000050] MIN TIN PER MIL-T-10727 OVER 1.27µm [.000050] MIN NICKEL PER QQ-N-290.

|          | STANDARD |                 | 1-66099-5       | 1-66098-9   |
|----------|----------|-----------------|-----------------|-------------|
|          | ▲        | ▲               | 1-66099-5       | 1-66098-8   |
| OBSELETE | ▲        | ▲               | 1-66099-0       | 1-66098-6   |
|          | ▲        | ▲               | 66099-4         | 66098-9     |
|          | ▲        | ▲               | 66099-3         | 66098-8     |
|          | ▲        | ▲               | 66099-2         | 66098-7     |
|          | ▲        | ▲               | 66099-1         | 66098-6     |
|          | STANDARD | ▲               | 66099-4         | 66098-4     |
|          | STANDARD | ▲               | 66099-3         | 66098-3     |
|          | STANDARD | ▲               | 66099-2         | 66098-2     |
|          | STANDARD | ▲               | 66099-1         | 66098-1     |
|          | REELING  | PIN BODY FINISH | LOOSE PIECE REF | PART NUMBER |

THIS DRAWING IS A CONTROLLED DOCUMENT. DWG V. FURLER 18JAN2003

TE Connectivity

TE CONNECTIVITY

PIN ASSEMBLY, .062, TYPE III+

APPROVED BY: G. STEINHAUER 18JAN03

DATE: 18JAN03

APPLICATION SPEC: --

SIZE: A2

WEIGHT: --

CAGE CODE: 00779

DRAWING NO: 66098

RESTRICTED TO: --

CUSTOMER DRAWING

SCALE: 1:1

SHEET: 1 of 1

REV: AF1