

4

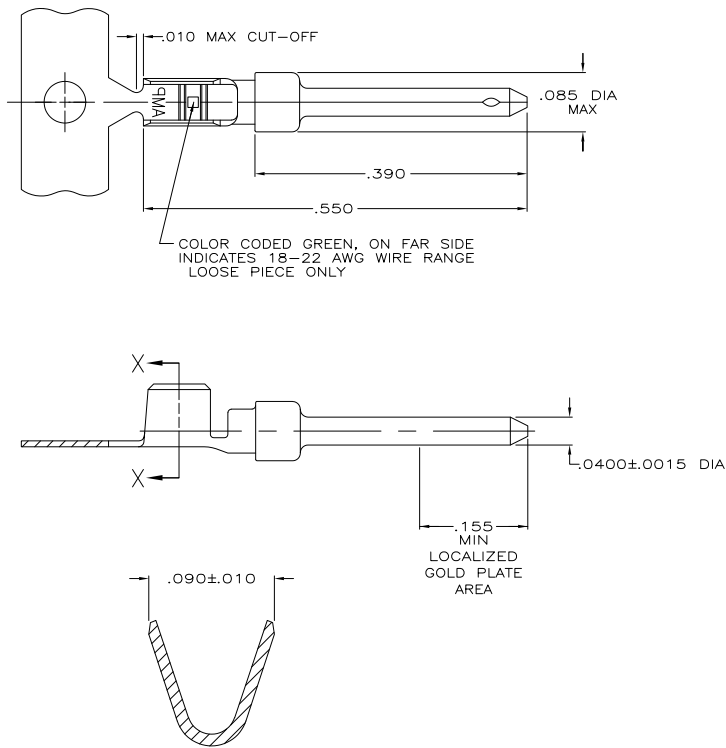
3

2

1

THIS DRAWING IS UNPUBLISHED. RELEASED FOR PUBLICATION. ALL RIGHTS RESERVED.

LOC	DIST	REVISIONS			
P	LTR	DESCRIPTION	DATE	BY	APPD
GP	00				
	K1	REVISED PER ECO-11-004835	11MAR11	RK	HMR



SECTION X-X
WIRE BARREL
SCALE 20:1

- 1 FOR MINI-APPLICATOR.
- 2 FOR HAND TOOL USE ONLY.
- 3. WIRE RANGE OF 18-22 AWG.
- 4. .068 MAX INSULATION DIAMETER ALLOWABLE WHEN USING 91067-2 EXTRACTION TOOL.
- 5. GOLD PLATING MAY NOT APPEAR ON CARRIER STRIP.
- 6 GOLD PLATING PER MIL-C-45204. NICKEL PLATING PER QQ-N-290. TIN PLATING PER MIL-T-10727.
- 7 GOLD PLATED IN LOCALIZED GOLD PLATE AREA AS FOLLOWS: .000030 MIN GOLD IN MATED AREA, GOLD FLASH ON REMAINDER OF CONTACT, ALL OVER .000050 MIN NICKEL UNDERPLATE. OR GOLD FLASH OVER PALLADIUM-NICKEL PLATE, .000030 MIN TOTAL IN MATED AREA, GOLD FLASH ON REMAINDER OF CONTACT, ALL OVER .000050 MIN NICKEL UNDERPLATE.
- 8 PLATED WITH GOLD FLASH OVER .000030 MIN NICKEL.
- 9 PLATED WITH GOLD FLASH IN LOCALIZED GOLD PLATE AREA, TIN PLATED WIRE BARREL, OVER .000030 NICKEL.
- 10 GOLD PLATED IN LOCALIZED GOLD PLATE AREA .000030 GOLD IN MATED AREA, TIN PLATED WIRE BARREL, OVER .000050 NICKEL.
- 11 OBSOLETE.
- 12 SUPERSEDED BY 745229-4

1	745229-3	745229-1
2	745229-0	745229-8
3	745229-7	745229-5
4	745229-4	745229-2
FINISH	LOOSE PIECE	PART NUMBER

DIMENSIONS:		TOLERANCES UNLESS OTHERWISE SPECIFIED:		APPROVALS:		TE Connectivity	
INCHES		Ø PLG	± .005	DR	S. WELDON	9-9-06	
		PLG	± .005	CHK	C. RICHARD	9-9-06	
		PLG	± .005	APPD	V. KUMAR	9-10-06	
		PLG	± .005	NAME			
MATERIAL	BRASS PER MIL-C-50	FINISH	SEE TABLE	APPLICATION SPEC	114-10000	SIZE	SIZE
				WEIGHT		QTY	00779
						DWG NO	C=745229
						RESTRICTED TO	
						CUSTOMER DRAWING	
						SCALE	10:1
						SHEET	1 of 1
						REV	K1

1471-9 (3/11)

745229

B

A