

4

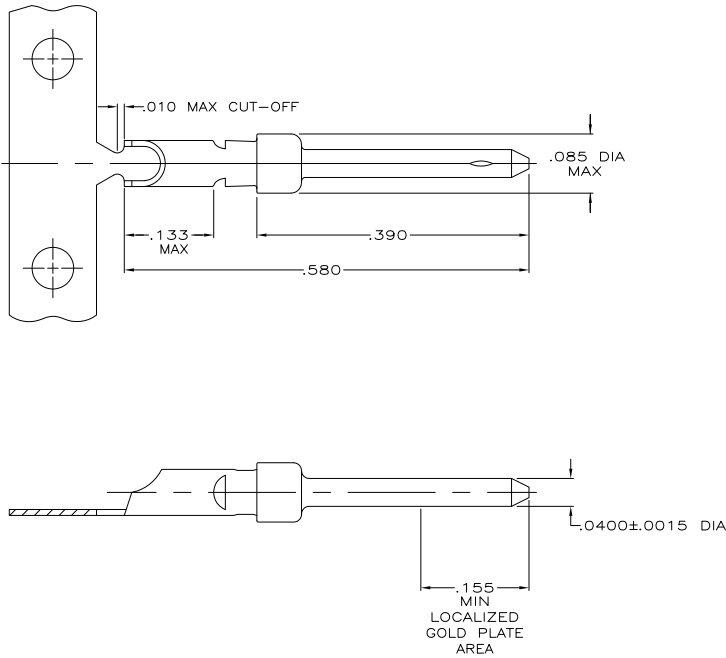
3

2

1

THIS DRAWING IS UNPUBLISHED. RELEASED FOR PUBLICATION. ALL RIGHTS RESERVED.

LOC		DIBT		REVISIONS			
P	LR	DESCRIPTION	DATE	BY	APPD		
GP	00						
	R1	REVISED PER ECO-11-004835	11MAR11	RK	HMR		



1. GOLD PLATING MAY NOT APPEAR ON CARRIER STRIP.
2. GOLD PLATING PER MIL-G-45204.
NICKEL PLATING PER QQ-N-290.
TIN PLATING PER MIL-T-10727.
3. GOLD PLATED IN LOCALIZED GOLD PLATE AREA AS FOLLOWS:
.000030 MIN GOLD IN MATED AREA, GOLD FLASH ON REMAINDER OF CONTACT, ALL OVER .000050 MIN NICKEL UNDERPLATE.
OR
GOLD FLASH OVER PALLADIUM-NICKEL PLATE, .000030 MIN TOTAL IN MATED AREA, GOLD FLASH ON REMAINDER OF CONTACT, ALL OVER .000050 MIN NICKEL UNDERPLATE.
4. GOLD PLATED IN LOCALIZED GOLD PLATED AREA, GOLD FLASH IN MATED AREA, TIN PLATED WIRE BARREL, OVER .000030 NICKEL.
5. GOLD PLATED IN LOCALIZED GOLD PLATED AREA, .000030 GOLD IN MATED AREA, TIN PLATED WIRE BARREL, OVER .000030 NICKEL.
6. .046 MAX DIA CONDUCTOR (UP TO 18 AWG).

	SMALL PACK	△	LOOSE PIECE	66570-8
OBSOLETE	STANDARD	△	STRIP	66570-6
OBSOLETE	STANDARD	△	STRIP	66570-4
	STANDARD	△	LOOSE PIECE	66570-3
	STANDARD	△	STRIP	66570-2
	PACKAGING TYPE		FINISH	TYPE
				PART NUMBER

THIS DRAWING IS A CONTROLLED DOCUMENT.		DR	9-9-06	TE Connectivity	
DIMENSIONS:		S. WELDON	9-9-06		
INCHES		C. RICHARD	9-9-06		
OTHER DIMENSIONS:		NAME		PIN CONTACT, SIZE 20 DF, WITH SOLDER CUP, AMPLIMITE	
MATERIAL:		PRODUCT SPEC		SIZE	
BRASS PER MIL-C-50		APPLICATION SPEC		CAGE CODE	
FINISH:		WEIGHT		DRAWING NO	
SEE TABLE		CUSTOMER DRAWING		A200779C-66570	
				RESTRICTED TO	
				SCALE 10:1 SHEET 1 of 1 REV R1	

1471-9 (3/11)

66570

B

A