

4

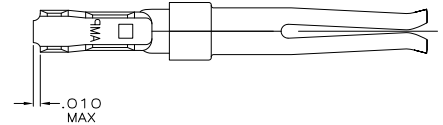
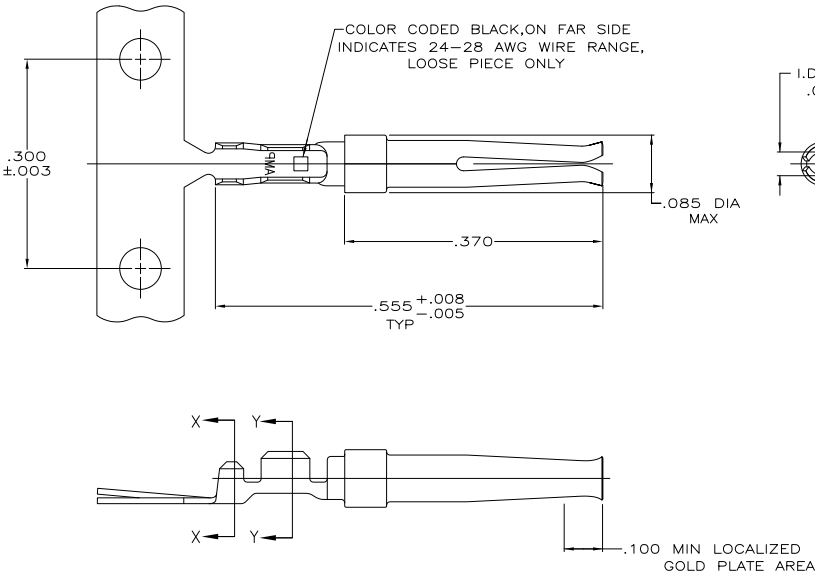
3

2

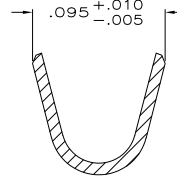
1

THIS DRAWING IS UNPUBLISHED. RELEASED FOR PUBLICATION
 © COPYRIGHT - By - ALL RIGHTS RESERVED.

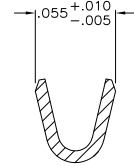
LOC		DIBT		REVISIONS			
P	LR	DESCRIPTION	DATE	MIN	APD		
M1		REVISED PER ECO-11-004835	11MAR11	RK	HMR		



DETAIL Z



SECTION X-X
SCALE 20:1



SECTION Y-Y
SCALE 20:1

- 1 GOLD PLATING PER MIL-G-45204
NICKEL PLATING PER QQ-N-290
TIN PLATING PER MIL-T-10727.
- 2 .000030 MIN GOLD IN LOCALIZED PLATE AREA, .000100 MIN TIN ON WIRE BARRELS,
ALL OVER .000050 MIN NICKEL.
- 3 GOLD FLASH IN LOCALIZED PLATE AREA, .000100 MIN TIN ON WIRE BARRELS, ALL
OVER .000030 MIN NICKEL.
- 4. CRIMP STRIP USING AMP MINI APPLICATOR.
- 5. CRIMP LOOSE PIECE USING AMP HAND TOOL ONLY.
- 6. CONTACT ACCEPTS WIRE RANGE OF 24-28 AWG AND INSULATION RANGE OF .050-.060.
- 7 PLATED WITH .000030 GOLD ON INSIDE OF LOCALIZED GOLD PLATE AREA, GOLD
FLASH ON REMAINDER, ALL OVER .000050 NICKEL UNDERPLATE.
-OR-
GOLD FLASH OVER PALLADIUM NICKEL .000030 TOTAL ON INSIDE OF LOCALIZED GOLD
PLATE AREA, GOLD FLASH ON REMAINDER, ALL OVER .000050 NICKEL UNDERPLATE.

SUPERSEDED BY 66683-4	SEE DETAIL Z	1-66683-2
OBSELETE	-	1-66683-0
SUPERSEDED BY 66683-4	SEE DETAIL Z	66683-9
OBSELETE	-	66683-7
	SEE DETAIL Z	66683-4
	-	66683-2
FINISH	LOOSE PIECE	PART NUMBER

DIMENSIONS:		DRAWN		DATE		TE Connectivity	
INCHES		C. REIFENBERGER		23 JAN 06		TE Connectivity	
		S. STONE		20 MAR 06		SOCKET CONTACT, SIZE 20 DF, AMPLIMITE™	
		P. FEINBERG		04 APR 06			
		APPLICATION SPEC:		SIZE		CAGE CODE	
		PRODUCT SPEC:		A2		00779	
		MATERIAL:		DRAWING NO:		RESTRICTED TO:	
		PHOSPHOR BRONZE PER QQ-B-750		C-66683			
		FINISH:		CUSTOMER DRAWING		SCALE 10:1 SHEET 1 of 1 REV M1	