

4

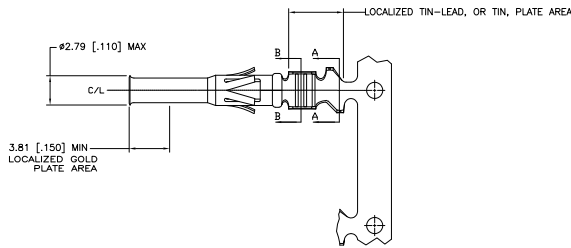
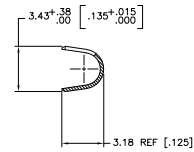
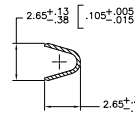
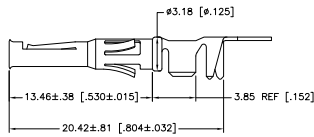
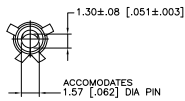
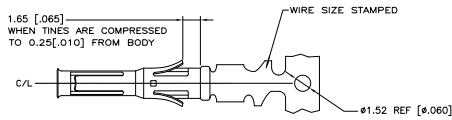
3

2

1

THIS DRAWING IS UNPUBLISHED. RELEASED FOR PUBLICATION  
 © COPYRIGHT - By - ALL RIGHTS RESERVED.

LOC	DIST	REVISIONS			
P	LTR	DESCRIPTION	DATE	DWN	APVD
	D1	REVISED PER ECO-11-004917	11MAR11	RK	HMR



1. WIRE RANGE 22-18 AWG.
  2. INSULATION RANGE 2.79-1.27 [0.110-0.050] DIA.
  3. FOR LOOSE PIECE PART SEE DWG 66592.
- ▲ 0.76µm [0.000030] MIN GOLD IN LOCALIZED GOLD PLATE AREA, 1.27µm [0.000050] MIN TIN-LEAD IN LOCALIZED TIN-LEAD PLATE AREA, BOTH OVER 1.27µm [0.000050] MIN NICKEL.
  - ▲ TIN PLATED.
  - ▲ GOLD PLATING PER MIL-G-45204, TIN PER MIL-T-10727 AND NICKEL PER QQ-N-290.
  - ▲ 0.76µm [0.000030] MIN GOLD IN LOCALIZED GOLD PLATE AREA, 1.27µm [0.000050] MIN TIN IN LOCALIZED TIN PLATE AREA, BOTH OVER 1.27µm [0.000050] MIN NICKEL.

REVERSE REELED FOR MINI-APPLICATOR	▲	66582-7
REVERSE REELED FOR MINI-APPLICATOR	▲▲	66582-4
-	▲▲	66582-3
REVERSE REELED FOR MINI-APPLICATOR	▲▲	66582-2
-	▲▲	66582-1
DESCRIPTION	FINISH	

THIS DRAWING IS A CONTROLLED DOCUMENT.		DWN V. FURLER 15MAY2003	TE Connectivity	
DIMENSIONS: mm [INCHES]		CHK G. STEINHAUER 16MAY03	CONTACT, SOCKET, STRIP, TYPE VI, MULTIMATE	
TOLERANCES UNLESS OTHERWISE SPECIFIED:		APVD G. STEINHAUER 16MAY03	RESTRICTED TO	
0 PLC ± -		PRODUCT SPEC	-	
1 PLC ± -		APPLICATION SPEC	-	
2 PLC ± 0.13 [0.005]		WEIGHT	-	
3 PLC ± -		SIZE	A3	
4 PLC ± -		CAGE CODE	00779	
ANGLES ± -		DRAWING NO	C-66582	
MATERIAL BRASS MIL-C-50	FINISH SEE TABLE ▲	SCALE	8.5:1	
CUSTOMER DRAWING		SHEET	1 OF 1	
		REV	D1	