

4

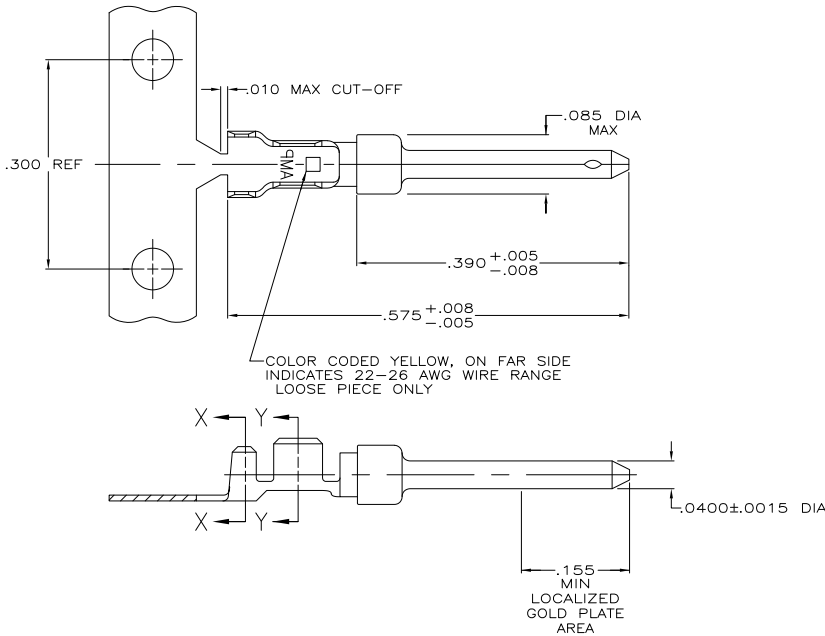
3

2

1

THIS DRAWING IS UNPUBLISHED. RELEASED FOR PUBLICATION. ALL RIGHTS RESERVED.

LOC	DIST	REVISIONS					
GP	00	P	LTR	DESCRIPTION	DATE	BY	APPD
		K1		REVISED PER ECO-11-004835	11MAR11	RK	HMR



- 1 FOR MINI-APPLICATOR.
- 2 FOR HAND TOOL USE ONLY.
- 3. WIRE RANGE OF 22-26, INSULATION RANGE OF .040-.050.
- 4. GOLD PLATING MAY NOT APPEAR ON CARRIER STRIP.
- 5 GOLD PLATING PER MIL-C-45204. NICKEL PLATING PER QQ-N-290. TIN PLATING PER MIL-T-10727.
- 6 GOLD PLATED IN LOCALIZED GOLD PLATE AREA AS FOLLOWS:
.000030 MIN GOLD IN MATED AREA,
GOLD FLASH ON REMAINDER OF CONTACT, ALL OVER
.000050 MIN NICKEL UNDERPLATE.
OR
GOLD FLASH OVER
PALLADIUM-NICKEL PLATE, .000030 MIN TOTAL IN MATED AREA,
GOLD FLASH ON REMAINDER OF CONTACT, ALL OVER
.000050 MIN NICKEL UNDERPLATE.
- 7 .000001 MIN GOLD OVER
.000030 MIN NICKEL.
- 8 GOLD PLATED IN LOCALIZED GOLD PLATED AREA,
.000001 MIN GOLD IN MATED AREA,
TIN PLATED WIRE BARRELS, OVER
.000030 NICKEL.
- 9 GOLD PLATED IN LOCALIZED GOLD PLATED AREA,
.000030 GOLD IN MATED AREA,
TIN PLATED WIRE BARRELS, OVER
.000050 NICKEL.

OBSOLETE	SMALL PACK	△	△	LOOSE PIECE	1-745254-7
OBSOLETE	STANDARD	△	△	LOOSE PIECE	1-745254-6
OBSOLETE	STANDARD	△	△	STRIP	1-745254-4
OBSOLETE	STANDARD	△	△	LOOSE PIECE	1-745254-3
OBSOLETE	STANDARD	△	△	STRIP	1-745254-1
	STANDARD	△	△	LOOSE PIECE	745254-7
	STANDARD	△	△	LOOSE PIECE	745254-6
	STANDARD	△	△	STRIP	745254-3
	STANDARD	△	△	STRIP	745254-2
	PACKAGING TYPE	FINISH	USE	TYPE	PART NUMBER

SECTION X-X
INSULATION BARREL
SCALE 20:1

SECTION Y-Y
WIRE BARREL
SCALE 20:1

DIMENSIONS:		OTHER DIMENSIONS:		APPROVALS:		TE Connectivity	
INCHES	0.0005	0.0005	0.0005	DESIGNED BY: S. WELDON	DATE: 9-9-06	TE Connectivity	
	0.0005	0.0005	0.0005	CHECKED BY: C. RICHARD	DATE: 9-9-06	PIN CONTACT, SIZE 20 DF, 22-26 AWG, W/.040-.050 DIA INSULATION SUPPORT	
	0.0005	0.0005	0.0005	APPROVED BY: V. KUMAR	DATE: 9-10-06	SIZE: A2 CASE CODE: C=745254	
MATERIAL:	BRASS PER MIL-C-50	FINISH:	SEE TABLE	APPLICATION SPEC:	114-10000	RESTRICTED TO:	
CUSTOMER DRAWING				SCALE:	10:1	SHEET:	1 of 1