

4

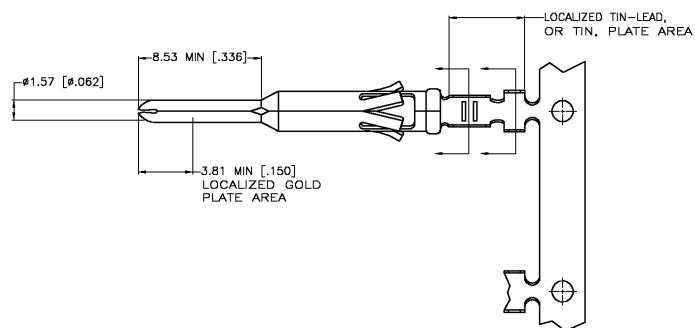
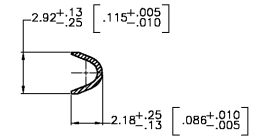
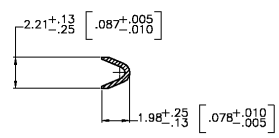
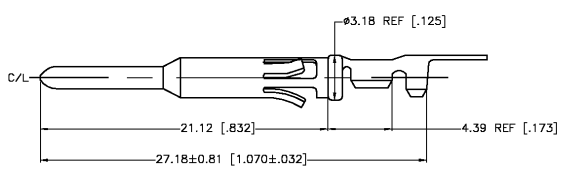
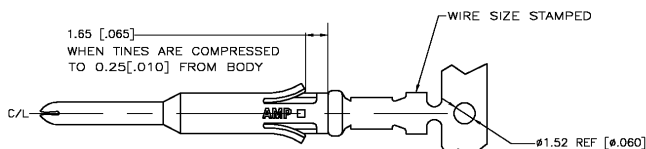
3

2

1

THIS DRAWING IS UNPUBLISHED. RELEASED FOR PUBLICATION  
 © COPYRIGHT - BY TYCO ELECTRONICS CORPORATION. ALL RIGHTS RESERVED.

LOC	DIST	REVISIONS					
FT	0	P	LTR	DESCRIPTION	DATE	DWN	APVD
		G		REV PER EC 0G3B-0963-03	12/11/03	SS	GS



- 1. WIRE RANGE 24-20 AWG.
- 2. INSULATION RANGE 1.02-2.03[.040-.080] DIA.
- 3. FOR LOOSE PIECE PART SEE DWG 66593.
- △ 0.76µm [.000030] MIN GOLD IN LOCALIZED GOLD PLATE AREA, 1.27µm [.000050] MIN TIN-LEAD IN LOCALIZED TIN-LEAD PLATE AREA, BOTH OVER 1.27µm [.000050] MIN NICKEL.
- △ TIN PLATED.
- △ GOLD PLATING PER MIL-G-45204, TIN PER MIL-T-10727 AND NICKEL PER QQ-N-290.
- △ 0.76µm [.000030] MIN GOLD IN LOCALIZED GOLD PLATE AREA, 1.27µm [.000050] MIN TIN IN LOCALIZED TIN PLATE AREA, BOTH OVER 1.27µm [.000050] MIN NICKEL.

REVERSE REELED FOR MINI-APPLICATOR	△	1-66583-0
REVERSE REELED FOR MINI-APPLICATOR	△	66583-4
OBSELETE	-	66583-3
REVERSE REELED FOR MINI-APPLICATOR	△	66583-2
-	△	66583-1
DESCRIPTION	FINISH	

THIS DRAWING IS A CONTROLLED DOCUMENT.

DIMENSIONS: MM [INCHES]	TOLERANCES UNLESS OTHERWISE SPECIFIED:	DWN V. FURLER 16MAY2003		Tyco Electronics Corporation
0 PLC ± -	1 PLC ± -	CHK C. STEINHAUER 16MAY03		Harrisburg, PA 17105
2 PLC ± 0.13 [.005]	3 PLC ± -	APVD G. STEINHAUER 16MAY03	NAME	CONTACT, PIN, STRIP, TYPE VI, MULTIMATE
4 PLC ± -	ANGLES ± -	PRODUCT SPEC	SIZE	A3
MATERIAL BRASS MIL-C-50	FINISH SEE TABLE	APPLICATION SPEC	CAGE CODE	00779
		WEIGHT	DRAWING NO	66583
		CUSTOMER DRAWING	RESTRICTED TO	
			SCALE	NTS
			SHEET	1 OF 1
			REV	G

AMP 1470-19 REV 31MAR2000

H:\