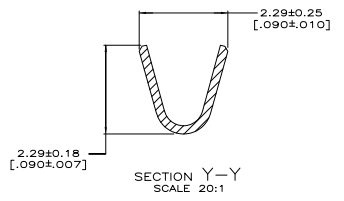
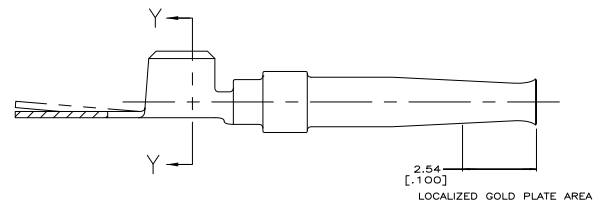
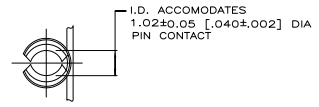
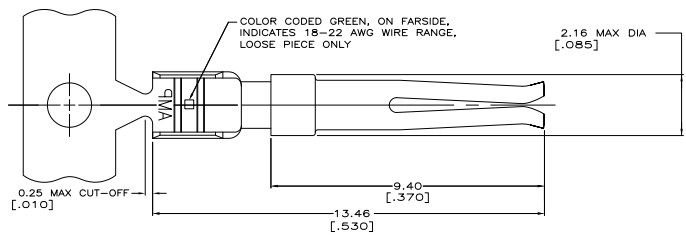


THIS DRAWING IS UNPUBLISHED
 ALL RIGHTS RESERVED

| REV | DATE | DESCRIPTION | BY | CHK | APP |
|-----|------|---------------------------|----|-----|-----|
| 00 | | | | | |
| 01 | | REVISED PER EDD-11-004835 | | | |



- △ FOR MINI-APPLICATOR.
- △ PLATED WITH 0.76µm [.000030] GOLD ON INSIDE OF LOCALIZED GOLD PLATE AREA, GOLD FLASH ON REMAINDER, ALL OVER 1.27µm [.000050] NICKEL UNDERPLATE.
-OR-
GOLD FLASH OVER PALLADIUM-NICKEL 0.76µm [.000030] TOTAL ON INSIDE OF LOCALIZED GOLD PLATE AREA, GOLD FLASH ON REMAINDER, ALL OVER 1.27µm [.000050] NICKEL UNDERPLATE.
- △ GOLD FLASH PER MIL-G-45204 ON INSIDE OF LOCALIZED GOLD PLATE AREA, GOLD FLASH PER MIL-G-45204 ON REMAINDER, ALL OVER 0.76µm [.000030] NICKEL UNDERPLATE PER QQ-N-290.
- △ CARRIER STRIP MAY NOT BE GOLD PLATED.
- 5. MAX. INSULATION DIAMETER ALLOWABLE FOR EXTRACTING CONTACT FROM CONNECTOR WITH 91067-2 TOOL IS 1.73 [.068].
- △ PLATED GOLD FLASH PER MIL-G-45204 ON MATING END FOR LENGTH OF 2.54 [.100] TIN PLATED WIRE BARRELS, ALL OVER 0.76µm [.000030] NICKEL PER QQ-N-290.
- △ SELECTIVE GOLD PLATED 0.76µm [.000030] THICK PER MIL-G-45204 ON MATING END FOR LENGTH OF 2.54 [.100] TIN PLATED WIRE BARRELS, ALL OVER 1.27 [.000050] NICKEL PER QQ-N-290.
- △ LOOSE PIECE PART NUMBERS ARE COLOR CODED.
- △ OBSOLETE

| FINISH | LOOSE PIECE PART. NO. | PART NUMBER |
|--------|-----------------------|-------------|
| △ | 1-745230-3 | 1-745230-1 |
| △ | 1-745230-0 | 745230-8 |
| △ | 745230-7 | 745230-5 |
| △ | 745230-4 | 745230-2 |

| | | | |
|--|--|--|---------|
| THIS DRAWING IS A CONTROLLED DOCUMENT. | | REV. 223-00 | 10-3-80 |
| DRAWING LABEL: | | BY: BMBR | 11-3-80 |
| DIMENSIONS (mm INCHES): | | BY: LEJMAN | 11-8-80 |
| PROJ. FILE: | | TE Connectivity | |
| DESCRIPTION: | | CONTACT, SOCKET, SIZE 20 DF, 18-22 AWG | |
| MATERIAL: P105 BRONZE | | SIZE: A1 | 00779 |
| SEE TABLE: | | REV: 15.1 | 1 of 1 |
| CUSTOMER DRAWING: | | DATE: 15.1 | REV: 1 |