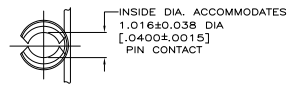
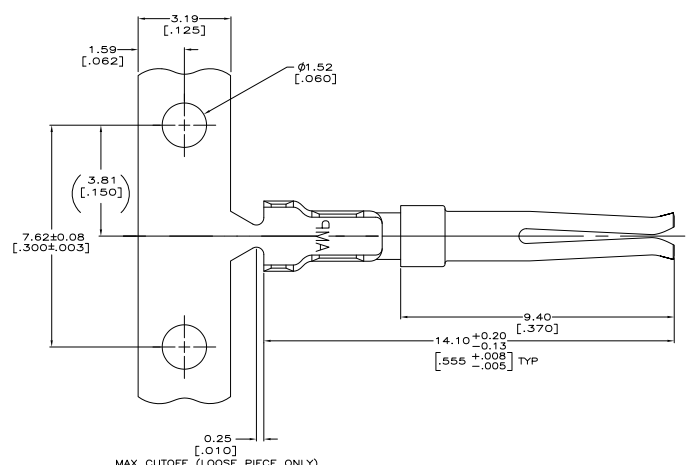
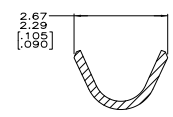
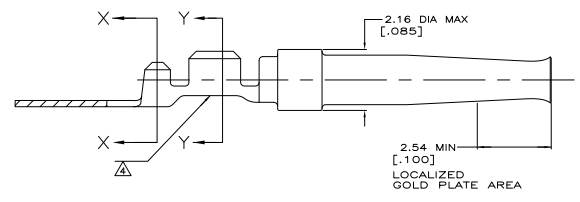


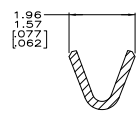
REV	DATE	DESCRIPTION	BY	APP'D
00				
D		REVISED FOR ECO-08-019103	TRAUCCO	ZMR/CWR



- ▲ FOR MINI-APPLICATOR CRIMPING.
- ▲ WIRE RANGE IS 22-26 AWG AND INSULATION RANGE IS 1.02/1.27 [.040/.050].
- ▲ PLATED WITH 0.76µm [.000030] GOLD ON INSIDE OF LOCALIZED GOLD PLATE AREA, 2.54µm [.000100] TIN ON CRIMP BARRELS, ALL OVER 1.27µm [.000050] NICKEL UNDERPLATE.  
 -OR-  
 GOLD FLASH OVER PALLADIUM-NICKEL 0.76µm [.000030] TOTAL ON INSIDE OF LOCALIZED GOLD PLATE AREA, 2.54µm [.000100] TIN ON CRIMP BARRELS, ALL OVER 1.27µm [.000050] NICKEL UNDERPLATE.
- ▲ COLOR CODE YELLOW IN THIS AREA INDICATES 22-26 AWG WIRE RANGE. ONLY LOOSE PIECE PART NUMBERS ARE COLOR CODED.
- 5. TIN PLATING MAY NOT APPEAR ON CARRIER STRIP.
- ▲ GOLD FLASH ON INSIDE OF LOCALIZED GOLD PLATE AREA, 2.54µm [.000100] TIN PLATED ON CRIMP BARRELS, ALL OVER 1.27µm [.000050] NICKEL UNDERPLATE.



SECTION X-X  
 INSULATION BARREL  
 SCALE 20:1



SECTION Y-Y  
 WIRE BARREL  
 SCALE 20:1

STANDARD	▲	STRIP	▲	1658543-3
STANDARD	▲	STRIP	▲	1658543-2
STANDARD	▲	LOOSE PIECE	▲	1658543-1
PACKAGING TYPE	FINISH	TYPE	PART NUMBER	

THIS DRAWING IS A CONTROLLED DOCUMENT.		REV	000001	DATE	11-19-04	BY	TRAUCCO	APP'D	ZMR/CWR
DESIGNER	TRAUCCO	DATE	11-19-04	BY	TRAUCCO	APP'D	ZMR/CWR	TTI Electronics Corporation Harrisburg, PA 17105-3608	
WORKS	108-40005	DATE	11-19-04	BY	TRAUCCO	APP'D	ZMR/CWR	SOCKET CONTACT, 20 DF, 22-26 AWG, AMPLIMITE	
REV	1	DATE	11-19-04	BY	TRAUCCO	APP'D	ZMR/CWR	DRAWING NO 100779	
REV	2	DATE	11-19-04	BY	TRAUCCO	APP'D	ZMR/CWR	REVISED TO 1658543	
REV	3	DATE	11-19-04	BY	TRAUCCO	APP'D	ZMR/CWR	REVISED TO 1658543	
REV	4	DATE	11-19-04	BY	TRAUCCO	APP'D	ZMR/CWR	REVISED TO 1658543	
REV	5	DATE	11-19-04	BY	TRAUCCO	APP'D	ZMR/CWR	REVISED TO 1658543	
REV	6	DATE	11-19-04	BY	TRAUCCO	APP'D	ZMR/CWR	REVISED TO 1658543	
REV	7	DATE	11-19-04	BY	TRAUCCO	APP'D	ZMR/CWR	REVISED TO 1658543	
REV	8	DATE	11-19-04	BY	TRAUCCO	APP'D	ZMR/CWR	REVISED TO 1658543	
REV	9	DATE	11-19-04	BY	TRAUCCO	APP'D	ZMR/CWR	REVISED TO 1658543	
REV	10	DATE	11-19-04	BY	TRAUCCO	APP'D	ZMR/CWR	REVISED TO 1658543	
REV	11	DATE	11-19-04	BY	TRAUCCO	APP'D	ZMR/CWR	REVISED TO 1658543	
REV	12	DATE	11-19-04	BY	TRAUCCO	APP'D	ZMR/CWR	REVISED TO 1658543	
REV	13	DATE	11-19-04	BY	TRAUCCO	APP'D	ZMR/CWR	REVISED TO 1658543	
REV	14	DATE	11-19-04	BY	TRAUCCO	APP'D	ZMR/CWR	REVISED TO 1658543	
REV	15	DATE	11-19-04	BY	TRAUCCO	APP'D	ZMR/CWR	REVISED TO 1658543	
REV	16	DATE	11-19-04	BY	TRAUCCO	APP'D	ZMR/CWR	REVISED TO 1658543	
REV	17	DATE	11-19-04	BY	TRAUCCO	APP'D	ZMR/CWR	REVISED TO 1658543	
REV	18	DATE	11-19-04	BY	TRAUCCO	APP'D	ZMR/CWR	REVISED TO 1658543	
REV	19	DATE	11-19-04	BY	TRAUCCO	APP'D	ZMR/CWR	REVISED TO 1658543	
REV	20	DATE	11-19-04	BY	TRAUCCO	APP'D	ZMR/CWR	REVISED TO 1658543	
REV	21	DATE	11-19-04	BY	TRAUCCO	APP'D	ZMR/CWR	REVISED TO 1658543	
REV	22	DATE	11-19-04	BY	TRAUCCO	APP'D	ZMR/CWR	REVISED TO 1658543	
REV	23	DATE	11-19-04	BY	TRAUCCO	APP'D	ZMR/CWR	REVISED TO 1658543	
REV	24	DATE	11-19-04	BY	TRAUCCO	APP'D	ZMR/CWR	REVISED TO 1658543	
REV	25	DATE	11-19-04	BY	TRAUCCO	APP'D	ZMR/CWR	REVISED TO 1658543	
REV	26	DATE	11-19-04	BY	TRAUCCO	APP'D	ZMR/CWR	REVISED TO 1658543	
REV	27	DATE	11-19-04	BY	TRAUCCO	APP'D	ZMR/CWR	REVISED TO 1658543	
REV	28	DATE	11-19-04	BY	TRAUCCO	APP'D	ZMR/CWR	REVISED TO 1658543	
REV	29	DATE	11-19-04	BY	TRAUCCO	APP'D	ZMR/CWR	REVISED TO 1658543	
REV	30	DATE	11-19-04	BY	TRAUCCO	APP'D	ZMR/CWR	REVISED TO 1658543	
REV	31	DATE	11-19-04	BY	TRAUCCO	APP'D	ZMR/CWR	REVISED TO 1658543	
REV	32	DATE	11-19-04	BY	TRAUCCO	APP'D	ZMR/CWR	REVISED TO 1658543	
REV	33	DATE	11-19-04	BY	TRAUCCO	APP'D	ZMR/CWR	REVISED TO 1658543	
REV	34	DATE	11-19-04	BY	TRAUCCO	APP'D	ZMR/CWR	REVISED TO 1658543	
REV	35	DATE	11-19-04	BY	TRAUCCO	APP'D	ZMR/CWR	REVISED TO 1658543	
REV	36	DATE	11-19-04	BY	TRAUCCO	APP'D	ZMR/CWR	REVISED TO 1658543	
REV	37	DATE	11-19-04	BY	TRAUCCO	APP'D	ZMR/CWR	REVISED TO 1658543	
REV	38	DATE	11-19-04	BY	TRAUCCO	APP'D	ZMR/CWR	REVISED TO 1658543	
REV	39	DATE	11-19-04	BY	TRAUCCO	APP'D	ZMR/CWR	REVISED TO 1658543	
REV	40	DATE	11-19-04	BY	TRAUCCO	APP'D	ZMR/CWR	REVISED TO 1658543	
REV	41	DATE	11-19-04	BY	TRAUCCO	APP'D	ZMR/CWR	REVISED TO 1658543	
REV	42	DATE	11-19-04	BY	TRAUCCO	APP'D	ZMR/CWR	REVISED TO 1658543	
REV	43	DATE	11-19-04	BY	TRAUCCO	APP'D	ZMR/CWR	REVISED TO 1658543	
REV	44	DATE	11-19-04	BY	TRAUCCO	APP'D	ZMR/CWR	REVISED TO 1658543	
REV	45	DATE	11-19-04	BY	TRAUCCO	APP'D	ZMR/CWR	REVISED TO 1658543	
REV	46	DATE	11-19-04	BY	TRAUCCO	APP'D	ZMR/CWR	REVISED TO 1658543	
REV	47	DATE	11-19-04	BY	TRAUCCO	APP'D	ZMR/CWR	REVISED TO 1658543	
REV	48	DATE	11-19-04	BY	TRAUCCO	APP'D	ZMR/CWR	REVISED TO 1658543	
REV	49	DATE	11-19-04	BY	TRAUCCO	APP'D	ZMR/CWR	REVISED TO 1658543	
REV	50	DATE	11-19-04	BY	TRAUCCO	APP'D	ZMR/CWR	REVISED TO 1658543	