

4

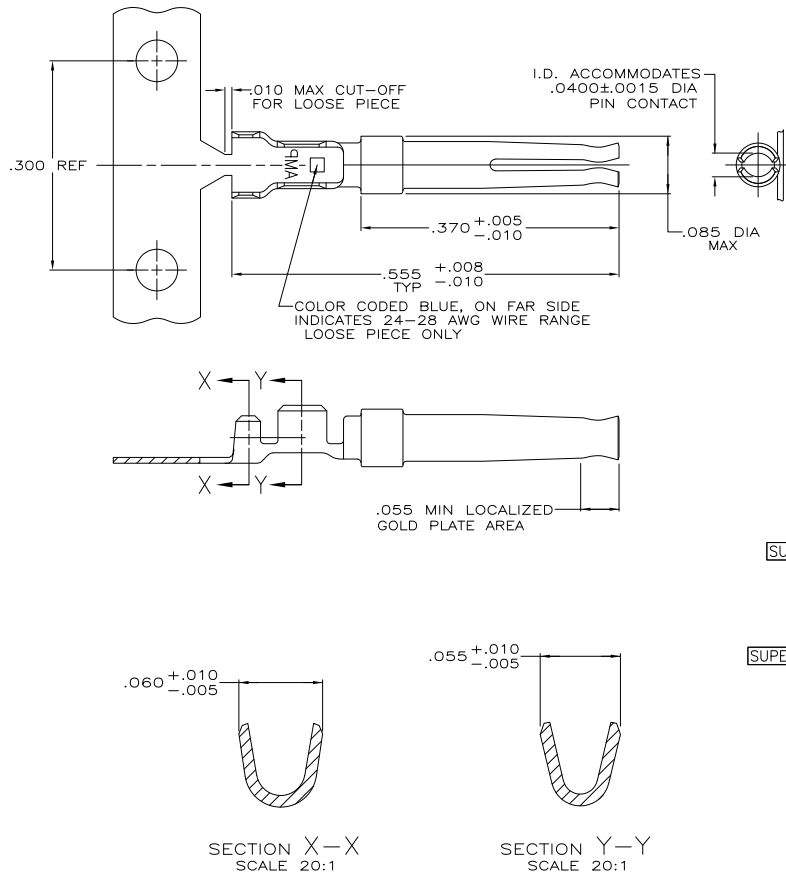
3

2

1

THIS DRAWING IS UNPUBLISHED. RELEASED FOR PUBLICATION. ALL RIGHTS RESERVED.

LOC	DIST	REVISIONS				
GP	00	P	LR	DATE	BY	APPD
		AR1	REVISED PER ECO-11-004835	11MAR11	RK	HMR



- ▲ FOR MINI-APPLICATOR AND STRIPPER CRIMPER.
- ▲ FOR HAND TOOL USE ONLY.
- ▲ FOR STANDARD APPLICATOR PART #566184 ONLY.
- 4. WIRE RANGE OF 24-28, INSULATION RANGE OF .030-.040.
- 5. GOLD PLATING MAY NOT APPEAR ON CARRIER STRIP.
- ▲ GOLD PLATING PER MIL-G-45204, NICKEL PLATING PER QQ-N-290, TIN PLATING PER MIL-T-10727, COPPER PLATING PER MIL-C-14550.
- ▲ PLATED WITH .000050 GOLD ON INSIDE OF LOCALIZED GOLD PLATE AREA, .000050 GOLD ON REMAINDER, ALL OVER .000050 NICKEL UNDERPLATE.
- ▲ PLATED WITH .000030 GOLD ON INSIDE OF LOCALIZED GOLD PLATE AREA, GOLD FLASH ON REMAINDER, ALL OVER .000050 NICKEL UNDERPLATE.
- OR
- ▲ GOLD FLASH OVER PALLADIUM-NICKEL, .000030 TOTAL ON INSIDE OF LOCALIZED GOLD PLATE AREA, GOLD FLASH ON REMAINDER, ALL OVER .000050 NICKEL UNDERPLATE.
- ▲ PLATED WITH .000100-.000200 TIN.
- ▲ PLATED WITH .000050 GOLD ON INSIDE OF LOCALIZED GOLD PLATE AREA, GOLD FLASH ON REMAINDER, ALL OVER .000050 NICKEL UNDERPLATE.
- ▲ PLATED WITH .000015 GOLD IN LOCALIZED GOLD PLATE AREA, GOLD FLASH ON REMAINDER, OVER .000050 NICKEL.
- ▲ PLATED WITH .000030 GOLD IN LOCALIZED GOLD PLATE AREA, TIN PLATED WIRE BARRELS, OVER .000030 NICKEL.
- ▲ PLATED WITH .000030 GOLD IN LOCALIZED GOLD PLATE AREA, TIN PLATED WIRE BARRELS, OVER .000050 NICKEL.
- ▲ AMP ITALY PART NUMBER ONLY.

STATUS	STANDARD	FINISH	USE	TYPE	PART NUMBER
OBSOLETE	SMALL PACK	▲	▲	STRIP	7-66505-0
OBSOLETE	STANDARD	▲	▲	LOOSE PIECE	6-66505-9
SUPERSEDED BY 66505-9	STANDARD	▲	▲	LOOSE PIECE	6-66505-2
OBSOLETE	STANDARD	▲	▲	STRIP	6-66505-0
OBSOLETE	STANDARD	▲	▲	LOOSE PIECE	5-66505-9
OBSOLETE	STANDARD	▲	▲	STRIP	5-66505-7
OBSOLETE	STANDARD	▲	▲	STRIP	5-66505-5
OBSOLETE	STANDARD	▲	▲	STRIP	2-66505-7
SUPERSEDED BY 5-66505-7	STANDARD	▲	▲	STRIP	1-66505-4
OBSOLETE	STANDARD	▲	▲	STRIP	1-66505-3
OBSOLETE	STANDARD	▲	▲	STRIP	1-66505-2
OBSOLETE	STANDARD	▲	▲	LOOSE PIECE	1-66505-0
OBSOLETE	STANDARD	▲	▲	LOOSE PIECE	66505-9
OBSOLETE	STANDARD	▲	▲	LOOSE PIECE	66505-8
OBSOLETE	STANDARD	▲	▲	STRIP	66505-4
OBSOLETE	STANDARD	▲	▲	STRIP	66505-3
OBSOLETE	STANDARD	▲	▲	STRIP	66505-2

THIS DRAWING IS A CONTROLLED DOCUMENT. DATE: 1-6-87

DESIGNED BY: C. RICHARD
 CHECKED BY: S. WELDON
 APPROVED BY: S. WELDON

TE Connectivity

SOCKET CONTACT, SIZE 20 DF, 24-28 AWG, W/ .030-.040 DIA INSULATION SUPPORT.

APPLICATION SPEC: 114-10000
 WEIGHT: -
 SIZE: A2
 CASE CODE: 00779
 DRAWING NO: C-66505

MATERIAL: PHOSPHOR BRONZE
 FINISH: SEE TABLE
 CUSTOMER DRAWING

SCALE: 10:1
 SHEET: 1 of 1
 REV: AR1