

4

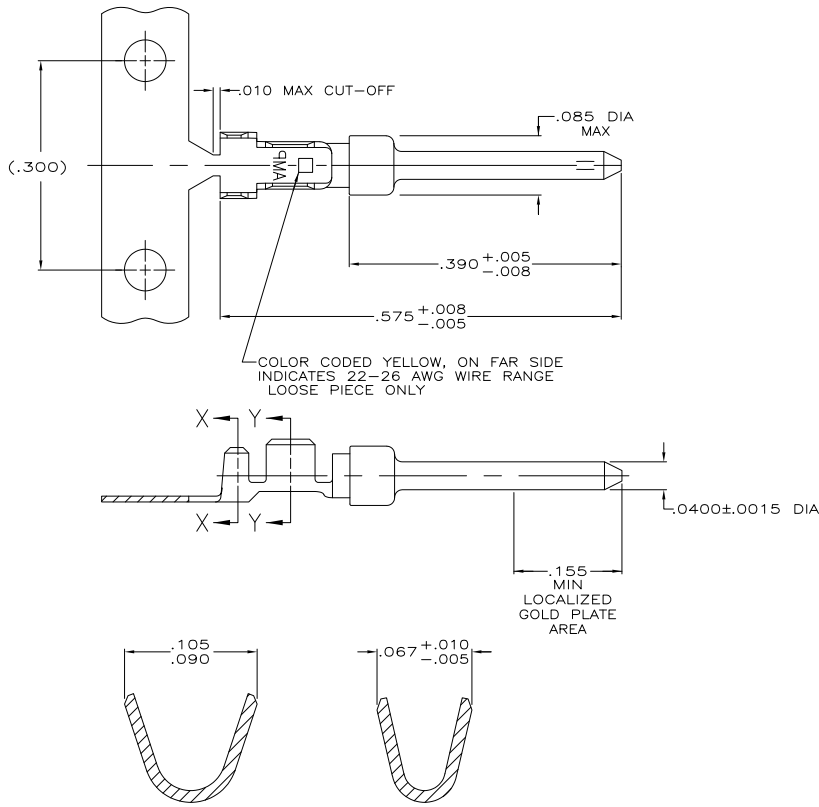
3

2

1

THIS DRAWING IS UNPUBLISHED. RELEASED FOR PUBLICATION. ALL RIGHTS RESERVED.

LOC	DIST	REVISIONS					
GP	00	P	LTR	DESCRIPTION	DATE	MIN	APD
		D1		REVISED PER ECO-11-004835	11MAR11	RK	HMR



- 1 FOR MINI-APPLICATOR.
- 2 FOR HAND TOOL USE ONLY.
- 3. WIRE RANGE OF 22-26, INSULATION RANGE OF .040-.050.
- 4. TIN PLATING MAY NOT APPEAR ON CARRIER STRIP.
- 5 GOLD PLATED IN LOCALIZED GOLD PLATE AREA AS FOLLOWS: .000030 MIN GOLD IN MATED AREA, .000100 MIN TIN ON WIRE BARRELS, ALL OVER .000050 MIN NICKEL UNDERPLATE. OR GOLD FLASH OVER PALLADIUM-NICKEL PLATE, .000030 MIN TOTAL IN MATED AREA, .000100 MIN TIN ON WIRE BARRELS, ALL OVER .000050 MIN NICKEL UNDERPLATE.
- 6 GOLD FLASH IN LOCALIZED GOLD PLATE AREA, .000100 MIN TIN ON WIRE BARRELS, ALL OVER .000050 MIN NICKEL UNDERPLATE.

OBsolete	FINISH	USE	TYPE	PART NUMBER
6	6	6	LOOSE PIECE	1658544-4
6	6	6	STRIP	1658544-3
6	6	6	STRIP	1658544-2
6	6	6	LOOSE PIECE	1658544-1

THIS DRAWING IS A CONTROLLED DOCUMENT.		MIN	11-17-04	TE Connectivity	
DIMENSIONS: INCHES		OK	11-17-04	TE	
MATERIAL: BRASS		FINISH: SEE TABLE	APD: M. WALMSLEY	PIN CONTACT, 20 DF, 22-26 AWG, AMPLIMITE	
FINISH: SEE TABLE		PRODUCT SPEC: 108-40005	APPLICATION SPEC: 114-10000	SIZE: A2	CAGE CODE: 00779
		WEIGHT: -	REVISION: C=1658544	SCALE: 10:1	SHEET: 1 of 1
			CUSTOMER DRAWING		REV: D1

1471-9 (3/11)

1658544