

4

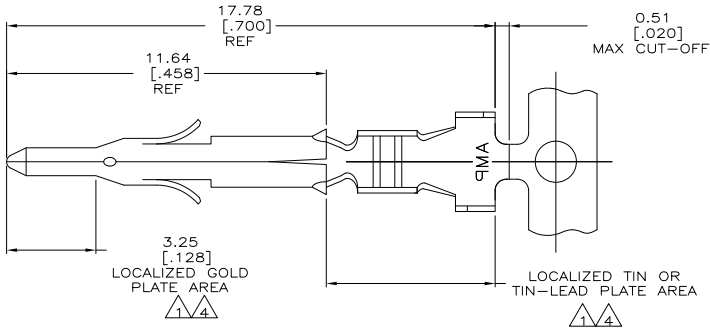
3

2

1

THIS DRAWING IS UNPUBLISHED. RELEASED FOR PUBLICATION. ALL RIGHTS RESERVED.

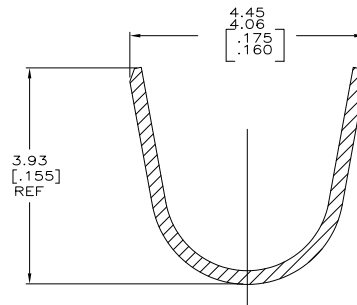
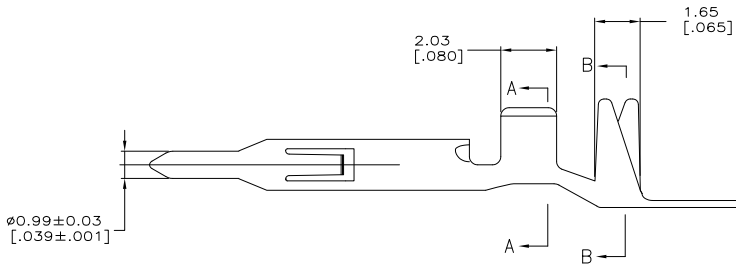
LOC	DIST	REVISIONS			
F	LNK	DESCRIPTION	DATE	BY	APPD
CM	00				
	B1	REVISED PER ECO-11-004820	11MAR11	RK	HMR



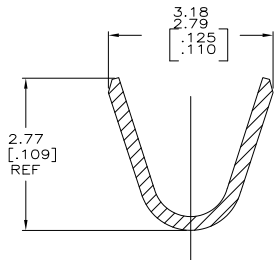
△ 0.00076 [.000030] MIN GOLD PER IN LOCALIZED GOLD PLATE AREA AND 0.00254-0.00635 [.000100-.000250] BRIGHT TIN-LEAD PER IN LOCALIZED TIN-LEAD PLATE AREA OVER 0.00127 [.000050] MIN NICKEL.

- 2. WIRE RANGE: 0.5-1.4MM² (20-16 AWG).
- 3. INSULATION RANGE: 2.01-3.20 [.079-.126] DIA.

△ 0.00076 [.000030] MIN GOLD PER IN LOCALIZED GOLD PLATE AREA AND 0.00254-0.00635 [.000100-.000250] MATTE TIN IN LOCALIZED TIN PLATE AREA OVER 0.00127 [.000050] MIN NICKEL.



SECTION B-B
SCALE 20:1



SECTION A-A
SCALE 20:1

△4	0.20 [.008] BRASS	1-794406-0
△1	0.25 [.010] BRASS	794406-3
PRE-TIN	0.25 [.010] BRASS	794406-1
FINISH	MATERIAL	PART NUMBER

THIS DRAWING IS A CONTROLLED DOCUMENT.		DRN	10UMN03	TE Connectivity
DIMENSIONS:	mm [INCHES]	S. HOOVER	10UMN03	
		CHK	10UMN03	
		C.	10UMN03	
		D. JONES	10UMN03	
		D. JONES	10UMN03	
		NAME		
		PRODUCT SPEC		
		APPLICATION SPEC		
		WEIGHT		
		FINISH		
MATERIAL		SIZE	QAGE CODE	DRAWING NO
		A2	00779	C=794406
		CUSTOMER DRAWING	SCALE	10:1
			SHEET	1 of 1
			REV	B1