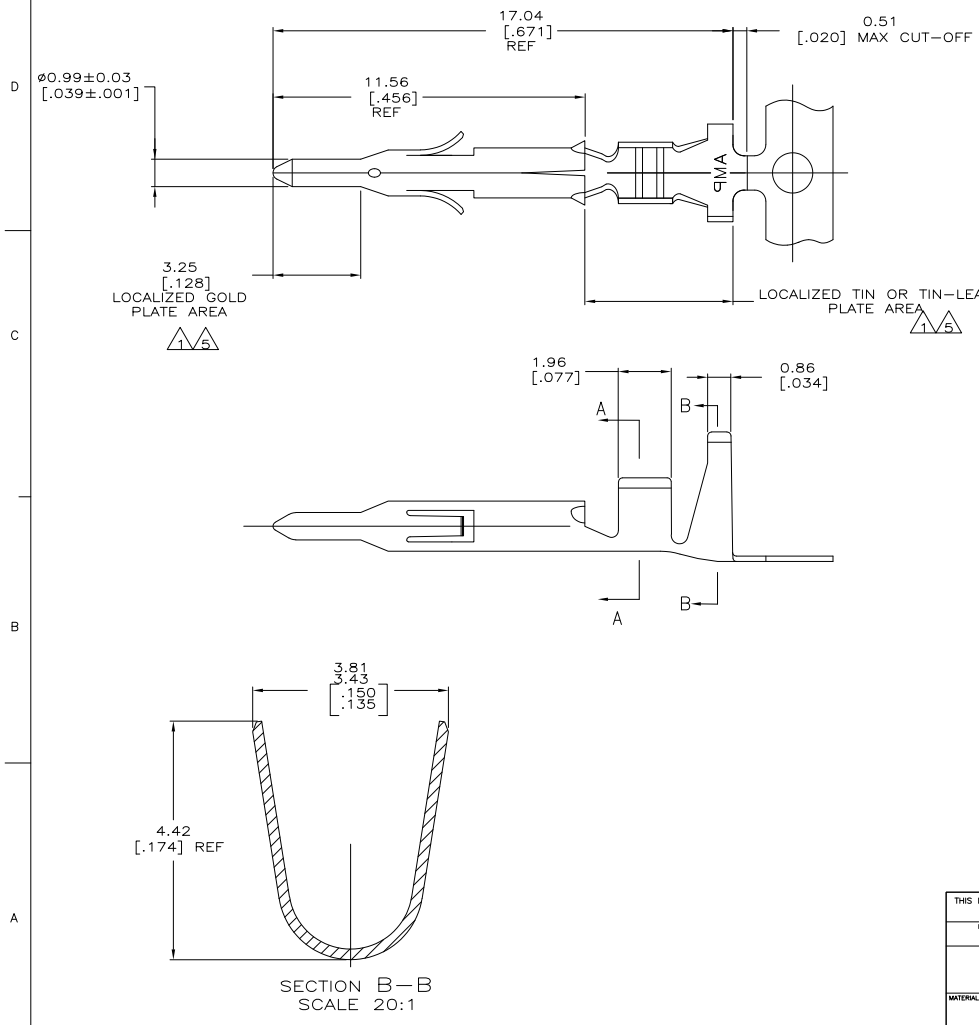
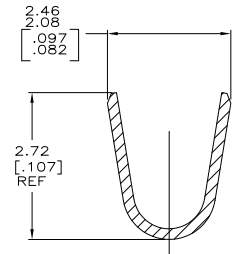


THIS DRAWING IS UNPUBLISHED. RELEASED FOR PUBLICATION
 © copyright - by - ALL RIGHTS RESERVED.

LOC	DEPT	REVISIONS			
CM	00	REV	DESCRIPTION	DATE	BY
		R1	REVISED PER ECO-11-004587	11MAR11	RK HMR



- 1 0.00076 [.00030] MIN GOLD IN LOCALIZED GOLD PLATE AREA AND 0.00254 [.000100] MIN BRIGHT TIN-LEAD IN LOCALIZED TIN-LEAD PLATE AREA OVER 0.00130 [.000050] MIN NICKEL.
- 2 WIRE RANGE: 0.3 - 0.9mm² (22-18 AWG).
- 3 INSULATION RANGE: 1.50-2.39[.059-.094] DIA.
- 4 DIMENSIONS IN BRACKETS ARE IN INCHES.
- 5 0.00076 [.00030] MIN GOLD IN LOCALIZED GOLD PLATE AREA AND 0.00254 [.000100] MIN BRIGHT TIN IN LOCALIZED TIN PLATE AREA OVER 0.00130 [.000050] MIN NICKEL.



SECTION A-A
SCALE 20:1

FINISH	MATERIAL	PART NUMBER
△	0.20 [.008] PHOS BRZ	1-770903-1
△	0.20 [.008] BRASS	1-770903-0
△	0.20 [.008] PH BRZ	770903-6
△	0.20 [.008] BRASS	770903-3
PRE-TIN	0.20 [.008] BRASS	770903-1

THIS DRAWING IS A CONTROLLED DOCUMENT.

DESIGNED BY: S. HOOVER	DESIGNED BY: S. HOOVER	DATE: 11/11/11	SCALE: 10:1
DRAWN BY: J. JONES	DRAWN BY: J. JONES	CHECKED BY: J. JONES	SHEET: 1 of 1
APPROVED BY: J. JONES	APPROVED BY: J. JONES	DATE: 11/11/11	REV: R1

STE TE Connectivity
 MINI UNIVERSAL MATE-N-LOK(TM)

MATERIAL: PHOS BRZ, BRASS, PH BRZ, BRASS, PRE-TIN BRASS
 FINISH: △, △, △, △, PRE-TIN
 WEIGHT: -
 CUSTOMER DRAWING: A2 00779 © 770903