

4

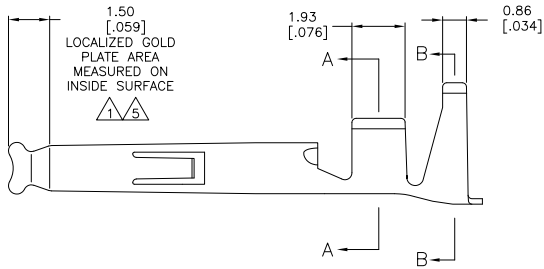
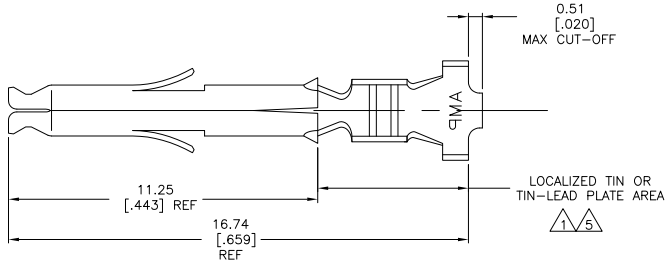
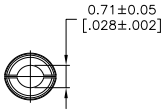
3

2

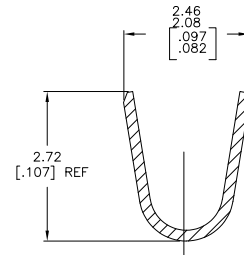
1

THIS DRAWING IS UNPUBLISHED. RELEASED FOR PUBLICATION. ALL RIGHTS RESERVED.

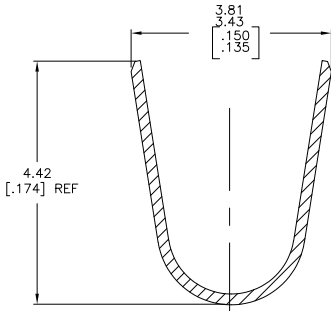
LOC	DIST	REVISIONS		
F	LNK	DESCRIPTION	DATE	BY
CM	00	REVISED PER ECO-11-004587	11MAR11	RK HMR



- 1 0.00076 [0.00030] MIN GOLD IN LOCALIZED GOLD PLATE AREA AND 0.00254 [0.000100] MIN BRIGHT TIN-LEAD IN LOCALIZED TIN-LEAD PLATE AREA OVER 0.00130 [0.000050] MIN NICKEL.
- 2 WIRE RANGE: 0.3 - 0.9mm² (22-18 AWG).
- 3 INSULATION RANGE: 1.50-2.39[.059-.094] DIA.
- 4 DIMENSIONS IN BRACKETS ARE IN INCHES.
- 5 0.00076 [0.00030] MIN GOLD IN LOCALIZED GOLD PLATE AREA AND 0.00254 [0.000100] MIN BRIGHT TIN IN LOCALIZED TIN PLATE AREA OVER 0.00130 [0.000050] MIN NICKEL.



SECTION A-A
SCALE 20:1



SECTION B-B
SCALE 20:1

FINISH	MATERIAL	PART NUMBER
5	0.20 [.008] PH BRZ	1-770904-1
5	0.20 [.008] BRASS	1-770904-0
1	0.20 [.008] PH BRZ	770904-6
PRE-TIN	0.20 [.008] PH BRZ	770904-4
1	0.20 [.008] BRASS	770904-3
PRE-TIN	0.20 [.008] BRASS	770904-1

THIS DRAWING IS A CONTROLLED DOCUMENT.		DM S. HOOVER 1700T02	TE Connectivity	
DIMENSIONS: mm [INCHES]		CHK C. JONES 1700T02	SOCKET, MINI UNIVERSAL MATE-N-LOK(TM)	
TOLERANCES UNLESS OTHERWISE SPECIFIED:		APP C. JONES 1700T02	RESTRICTED TO	
0 PLC	± .	PRODUCT SPEC	SIZE	CAGE CODE
1 PLC	± .	APPLICATION SPEC	A2	00779
2 PLC	± .	WEIGHT	C=	770904
3 PLC	± 0.15[.006]		SCALE	10:1
4 PLC	± .		SHEET	1 of 1
ANGLES	± .		REV	S1
MATERIAL	FINISH	CUSTOMER DRAWING		