

4

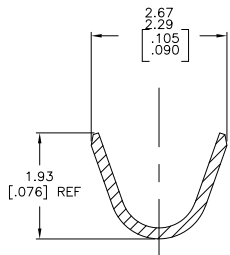
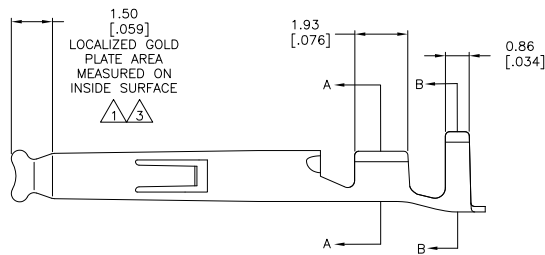
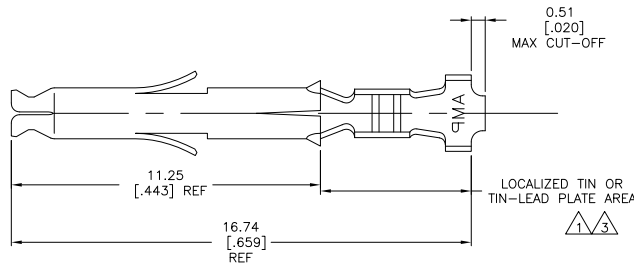
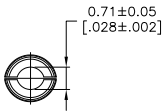
3

2

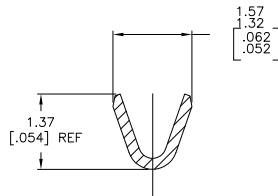
1

THIS DRAWING IS UNPUBLISHED. RELEASED FOR PUBLICATION. ALL RIGHTS RESERVED.

LOC	DIST	REVISIONS			
F	LNK	DESCRIPTION	DATE	BY	APPD
CM	00				
	P1	REVISED PER ECO-11-004820	11MAR11	RK	HMR



SECTION B-B SCALE 20:1



SECTION A-A SCALE 20:1

- ① 0.00076 [0.00030] MIN GOLD IN LOCALIZED GOLD PLATE AREA AND 0.00254 [0.000100] MIN BRIGHT TIN-LEAD IN LOCALIZED TIN-LEAD PLATE AREA OVER 0.0013 [0.000050] MIN NICKEL.
- 2. WIRE RANGE: 0.5-0.15 mm<sup>2</sup> (30-26 AWG)
- ③ 0.00076 [0.00030] MIN GOLD IN LOCALIZED GOLD PLATE AREA AND 0.00254 [0.000100] MIN MATTE TIN IN LOCALIZED TIN PLATE AREA OVER 0.0013 [0.000050] MIN NICKEL.

③	0.20 [0.008] PH BRZ	1-770834-1
③	0.20 [0.008] BRASS	1-770834-0
①	0.20 [0.008] PH BRZ	770834-6
PRE-TIN	0.20 [0.008] PH BRZ	770834-4
①	0.20 [0.008] BRASS	770834-3
PRE-TIN	0.20 [0.008] BRASS	770834-1
FINISH	MATERIAL	PART NUMBER

THIS DRAWING IS A CONTROLLED DOCUMENT.		DRM	1700102	TE Connectivity	
DIMENSIONS: mm [INCHES]		S. HOOVER	1700102	SOCKET, MINI UNIVERSAL MATE-N-LOK(TM)	
TOLERANCES UNLESS OTHERWISE SPECIFIED:		C. JONES	1700102	RESTRICTED TO	
0 PLC	±	D. JONES	1700102	CUSTOMER DRAWING	
1 PLC	±			SIZE	00779C=770834
2 PLC	±			SCALE	10:1
3 PLC	± 0.15[0.006]			SHEET	1 of 1
4 PLC	±			REV	P1
ANGLES	±				
FINISH					

