

4

3

2

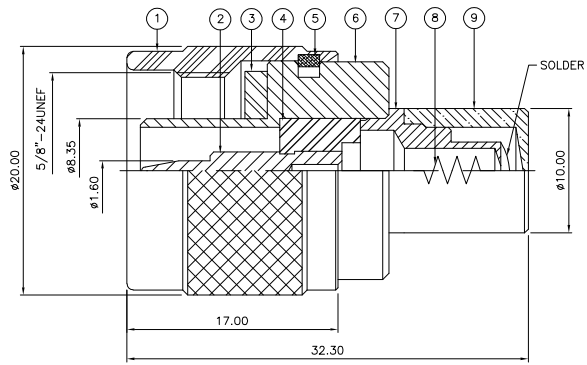
1

THIS DRAWING IS UNPUBLISHED. RELEASED FOR PUBLICATION MAY, 2006.  
 © COPYRIGHT 2006 BY TYCO ELECTRONICS CORPORATION. ALL RIGHTS RESERVED.

| LOC |     | DIST          |  | REVISIONS |     |      |  |
|-----|-----|---------------|--|-----------|-----|------|--|
| P   | LTR | DESCRIPTION   |  | DATE      | DWN | APVD |  |
|     | C   | ECR-06-012053 |  | 23MAY06   | JMS | FWK  |  |

NOTES:

- ▲ PACK IN ACCORDANCE WITH AMP SPEC 107-3275
- ▲ 100 TRAY PACK IN ACCORDANCE WITH AMP SPEC 107-3275
- ▲ Au PLATING
- ▲ Ni PLATING
- ▲ THIS ITEM MUST BE WHITE
- 6 ELECTRICAL CHARACTERISTICS
  - FREQUENCY RANGE: DC - 2 GHz
  - NOMINAL IMPEDANCE: 50 Ohm
  - INSULATION RESISTANCE: 5000 MOhm
  - WORKING VOLTAGE: 1000 Volts RMS at Sea Level
  - DIELECTRIC WITHSTAND VOLTAGE: 2500 Volts RMS Max
  - CONTACT RESISTANCE:
    - CENTRE CONTACT: 1.00 mOhm Max
    - OUTER CONTACT: 1.00 mOhm Max
  - VSWR @ x 2 GHz: 1.20:1
  - INSERTION LOSS @ 2 GHz: 0.30 Max
- 7 MECHANICAL CHARACTERISTICS
  - COUPLING RETENTION FORCE: 445 N Min
  - DURABILITY: 500 Cycles Min
- 8 ENVIRONMENTAL CHARACTERISTICS
  - OPERATING TEMPERATURE: -65 to +165 DegC
- 9 FOR TECHNICAL DATA REFER TO YOUR LOCAL TYCO ELECTRONICS SALES OFFICE
- 10 ALL DIMENSIONS ARE NOMINAL FOR REFERENCE ONLY UNLESS OTHERWISE STATED



| QTY  | UNIT | MATERIAL        | DESCRIPTION  | ITEM |
|------|------|-----------------|--------------|------|
| 1    | 1    | BRASS           | CAP          | 9    |
| 1    | 1    | 1/2W-50 OHM     | RESISTOR     | 8    |
| 1    | 1    | BRASS           | CHASSIS      | 7    |
| 1    | 1    | BRASS           | BODY         | 6    |
| 1    | 1    | BRASS           | CIRCLIP      | 5    |
| 1    | 1    | PTFE            | INSULATION   | 4    |
| 1    | 1    | SILICONE RUBBER | GASKET       | 3    |
| 1    | 1    | BRASS           | CONTACT      | 2    |
| 1    | 1    | BRASS           | COUPLING NUT | 1    |
| 6--0 | 1--0 | MATERIAL        | DESCRIPTION  | ITEM |

THIS DRAWING IS A CONTROLLED DOCUMENT.

|                  |  |                              |   |           |            |               |
|------------------|--|------------------------------|---|-----------|------------|---------------|
| DIMENSIONS: mm   | TOLERANCES UNLESS OTHERWISE SPECIFIED: | DWN J. SANDWELL 23MAY06      | Tyco Electronics Corporation<br>Bideford EX39 4HE |           |            |               |
|                  | 0 PLC ± -                              | CHK S. PARLOW 23MAY06        | NAME TYPE 'N' PLUG TERMINATION 50 OHM             |           |            |               |
|                  | 1 PLC ± -                              | APVD F. WHEELER-KING 23MAY06 |   |           |            |               |
| MATERIAL         | FINISH                                 | PRODUCT SPEC                 | SIZE  | CAGE CODE | DRAWING NO | RESTRICTED TO |
| SEE TABLE        | -                                      | APPLICATION SPEC             | A3  | 00779     | C-1337638  | -             |
| CUSTOMER DRAWING |  |                              | SCALE   | NTS       | SHEET      | 1 OF 1        |
|                  |  |                              | REV   | C         |            |               |