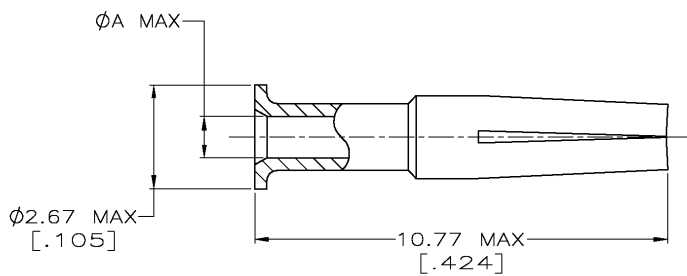


THIS DRAWING IS UNPUBLISHED. RELEASED FOR PUBLICATION .19  
 © COPYRIGHT 19 BY AMP INCORPORATED. ALL RIGHTS RESERVED.

LOC	DIST	REVISIONS			
P	LTR	DESCRIPTION	DATE	DWN	APVD
	C	REVISED PER QS14-0355-03.	31DEC03	JGH	JGH

D  
C  
B  
A



1. BERYLLIUM COPPER PER ASTM-B-197.
2. GOLD PLATE PER MIL-G-45204,  $0.76\mu m$  [.000030] MIN THICKNESS.
3. SILVER PLATE PER QQ-S-365,  $2.54\mu m$  [.000100] MIN THICKNESS.
4. TIN-LEAD PLATE PER ASTM-B-545,  $2.54\mu m$  [.000100] MIN THICKNESS.

1.22 [.048]	2	3-221149-6
0.41 [.016]	2	3-221149-1
1.14 [.045]	2	2-221149-6
0.64 [.025]	3	2-221149-1
0.64 [.025]	2	2-221149-0
0.64 [.025]	4	1-221149-9
0.81 [.032]	3	1-221149-4
0.81 [.032]	2	1-221149-3
0.81 [.032]	4	1-221149-2
1.07 [.042]	3	221149-7
1.07 [.042]	2	221149-6
1.07 [.042]	4	221149-5
A		FINISH
		PART NUMBER

THIS DRAWING IS A CONTROLLED DOCUMENT.		DWN MICHAEL E. COWHER 12JAN98	AMP Incorporated Harrisburg, PA 17105-3608	
DIMENSIONS: mm [INCHES]		CHK MICHAEL J. PHILLIPS 15JAN98	AMP	
TOLERANCES UNLESS OTHERWISE SPECIFIED:		APVD MICHAEL J. PHILLIPS 15JAN98	CONTACT, JACK, COMMERCIAL, BNC	
0 PLC ±-		PRODUCT SPEC	SIZE	CAGE CODE
1 PLC ±-		APPLICATION SPEC	A3	00779
2 PLC ±-		WEIGHT	DRAWING NO	
3 PLC ±-		CUSTOMER DRAWING	C-221149	
4 PLC ±-			SCALE	SHEET
ANGLES ±-			10:1	1 OF 1
				REV C

AMP 1470-19 REV 23FEB95 Translated 031231.115701 (MM/MD/HH/MSS) from ComputerVision, Inc., Medusa Revision 12.2.31  
 12-JAN-96 10:54:05 amp29151/home/amp29151/edmmod