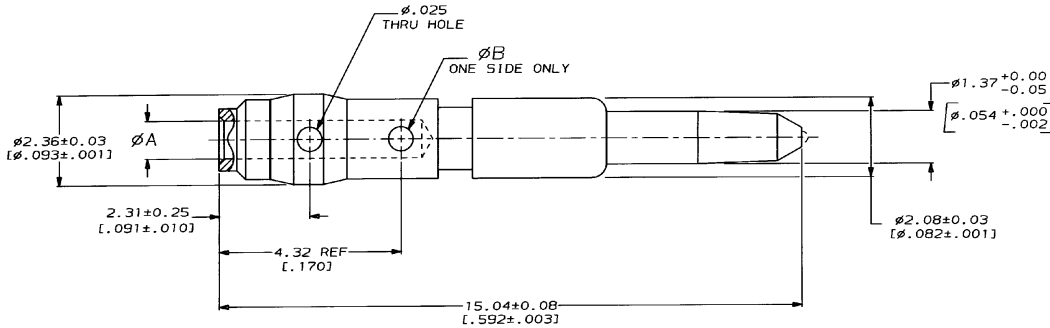


DRAWING MADE IN THIRD ANGLE PROJECTION
 THIS DRAWING IS UNPUBLISHED. RELEASED FOR PUBLICATION
 © COPYRIGHT 19 BY AMP INCORPORATED. ALL INTERNATIONAL RIGHTS RESERVED.

LOC	QTY	REV	ZONE	LTR	DESCRIPTION	DATE	APPD
AJ	16				REDWN, REV & ADD 1--1, 1--2 & 1--3 PER AJ-4833	3-14-91	BAS
				H	REV PER AJ-5802	11-12-91	JL

- GOLD PLATE PER MIL-G-45204
1.27µm [0.00050] MINIMUM THICK
- GOLD PLATE PER MIL-G-45204
2.54µm [0.00100] MINIMUM THICK



0.64 [0.025]	1.07 ± 0.03 [0.042 ± 0.001]		1-225467-3
0.64 [0.025]	0.79 ± 0.03 [0.031 ± 0.001]		1-225467-2
0.64 [0.025]	0.99 ± 0.03 [0.039 ± 0.001]		1-225467-1
0.38 [0.015]	0.46 ± 0.03 [0.018 ± 0.001]		1-225467-0
0.51 [0.020]	0.66 ± 0.03 [0.026 ± 0.001]		225467-8
0.64 [0.025]	1.07 ± 0.03 [0.042 ± 0.001]		225467-6
0.64 [0.025]	0.79 ± 0.03 [0.031 ± 0.001]		225467-4
0.64 [0.025]	0.99 ± 0.03 [0.039 ± 0.001]		225467-2
		CONTACT PLATING	PART NUMBER

DO NOT SCALE PRINT. UNLESS SPECIFIED		PART NO	
DIMENSIONS IN mm [INCHES]		AMP Incorporated Harrisburg, PA 17105-3608	
TOLERANCES ON:		NAME	
2 PLC DEC ± 0.20 [0.008]	APPD 3-21-91	CONTACT, CENTER, DUAL CRIMP, SERIES TNC	
3 PLC DEC ±	J. LIPPERT	DRAWING NO	
ANGLES ±	M. PHILLIPS	225467	
MATERIAL		SIZE	CAGE CODE
BRASS PER QQ-B-626		00779	15:1
FINISH		DRAWING NO	
		225467	
APPLICATION SPEC		SHEET	
		1 OF 1	
WEIGHT		CUSTOMER DRAWING	

225467

A