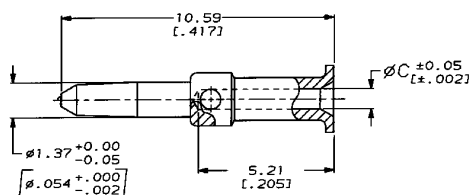
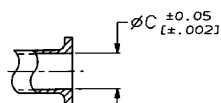


DRAWING MADE IN THIRD ANGLE PROJECTION
THIS DRAWING IS UNPUBLISHED. RELEASED FOR PUBLICATION
BY AMP INCORPORATED. ALL INTERNATIONAL RIGHTS RESERVED.

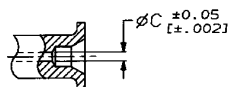
LOC	QTY	P	ZONE	LTR	REVISIONS	DATE	APPRO
AJ	16				D REDWN, REV 8 ADD 2--8 PER AJ-4560	2-20-91	BAS
					E REV PER AJ-5802	11-12-91	JL



VIEW X



VIEW Y
SAME AS VIEW X EXCEPT
FOR DIMENSIONS SHOWN



VIEW Z
SAME AS VIEW X EXCEPT
FOR DIMENSIONS SHOWN

- △ BRASS PER QQ-B-626
- △ GOLD PLATE PER MIL-G-45204
1.27 μ m [0.000050] MINIMUM THICK
- △ GOLD PLATE PER MIL-G-45204
0.76 μ m [0.00030] MINIMUM THICK
- △ GOLD PLATE PER MIL-G-45204
2.54 μ m [0.00100] MINIMUM THICK
- △ SILVER PLATE PER QQ-S-365
2.54 μ m [0.00100] MINIMUM THICK

VIEW	C	FINISH	PART NUMBER
X	0.79 [0.031]	△	2-331352-8
X	0.99 [0.039]	△	2-331352-7
X	0.79 [0.031]	△	2-331352-6
Z	0.36 [0.014]	△	2-331352-5
X	0.79 [0.031]	△	2-331352-3
X	1.09 [0.043]	△	2-331352-2
Y	1.40 [0.055]	△	2-331352-0
X	0.99 [0.039]	△	1-331352-7
X	1.19 [0.047]	△	1-331352-6
X	0.46 [0.018]	△	1-331352-4
X	0.61 [0.024]	△	1-331352-2
X	0.79 [0.031]	△	1-331352-0

PART NO			
AMP AMP Incorporated Harrisburg, PA 17105-3608			
CONTACT, MALE, DUAL CRIMP, SERIES BNC			
DO NOT SCALE PRINT. UNLESS SPECIFIED DIMENSIONS IN mm (INCHES) TOLERANCES ON: 2 PLC DEC ± 0.20 (0.008) 3 PLC DEC ± ANGLES ± 5°	OR 2-20-91 B. SCOTT CHK 3-18-91 J. LIPPERT APPD 4-3-91 M. PHILLIPS APPD 4-3-91 J. LIPPERT PRODUCT SPEC -	SIZE C CAGE CODE 00779 DRAWING NO 331352	SHEET 1 OF 1
FINISH SEE TABLE	APPLICATION SPEC - WEIGHT -	SCALE 10:1	

CUSTOMER DRAWING