

4

3

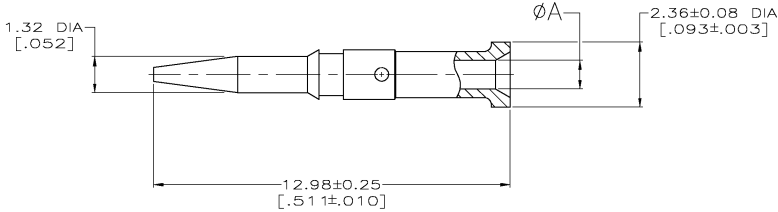
2

1

THIS DRAWING IS UNPUBLISHED. RELEASED FOR PUBLICATION. COPYRIGHT BY TYCO ELECTRONICS CORPORATION. ALL RIGHTS RESERVED.

LOC	REV	DATE	DESCRIPTION	BY	APP'D
AJ	16				
			REV PER QS14-0336-04		JDP

- 1 TIN-LEAD PL PER ASTM-B-545
- 2 GOLD PL PER MIL-G-45204
- 3 SILVER PL PER QQ-S-365
- 4 TIN PL PER ASTM-B-545 WITH SUPPLEMENTAL ANTI-FRETTING LUBRICANT.
- 5. BRASS PER ASTM B-16



OBSOLETE

1	0.38 [.015]	9-221607-4
2	0.61 [.024]	9-221607-3
3	0.79 [.031]	9-221607-2
4	0.79 [.031]	9-221607-1
5	0.99 [.039]	9-221607-0
6	1.19 [.047]	2-221607-8
7	0.38 [.015]	2-221607-6
8	0.38 [.015]	2-221607-5
9	0.38 [.015]	2-221607-4
10	0.61 [.024]	2-221607-2
11	0.61 [.024]	2-221607-1
12	0.61 [.024]	2-221607-0
13	1.12 [.044]	1-221607-8
14	1.12 [.044]	1-221607-7
15	1.12 [.044]	1-221607-6
16	0.79 [.031]	1-221607-4
17	0.79 [.031]	221607-8
18	0.99 [.039]	221607-7
19	0.79 [.031]	221607-6
20	0.99 [.039]	221607-5
21	0.79 [.031]	221607-4
22	0.99 [.039]	221607-2

THIS DRAWING IS A CONTROLLED DOCUMENT.

DIMENSIONS: INCHES 	TOLERANCES UNLESS OTHERWISE SPECIFIED: Ø PLG ± .002 Ø PLG ± .002 Ø PLG ± .002 H PLG ± .002 ANGLES ± .002	FINISH: SEE TABLE	DW: M. SNEED 9-10-90 CHK: J. LAMAN 7-6-90 APG: - PRODUCT SPEC: - APPLICATION SPEC: - WEIGHT: - CUSTOMER DRAWING	Tyco Electronics Corporation Harrisburg, Pa 17105-3608 CONTACT: MALE BNC	FINISH: ØA PART #	SHEET: A2 CASE CODE: 00779 DRAWING NO: 221607 SCALE: 10:1 SHEET: 1 of 1 REV: H
---------------------------	---	----------------------	---	--	----------------------	---

221607

A