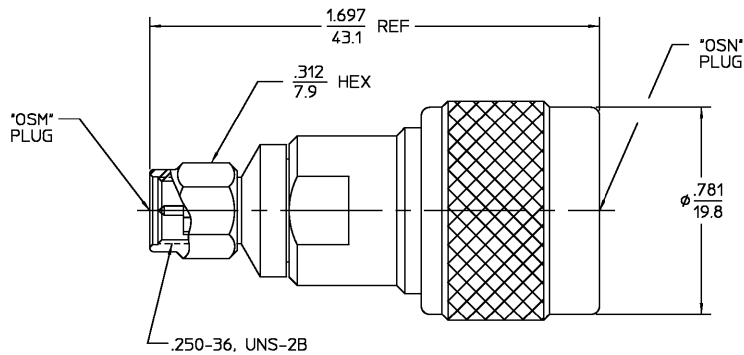
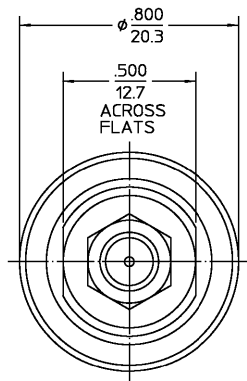


REVISIONS			
REV	DESCRIPTION	DATE	APPROVED
01 ₃	REDRAWN IN CAD, ECN 97-0001	K.LE 1-9-97	S. Morley 1/22/97
B	PER EC 0U20-0116-01-02	10/26/01	C. Hoang



HOUSING COUPLING NUTS	STAINLESS STEEL PER ASTM-A484 AND ASTM-A582, TYPE 303	PASSIVATE PER QQ-P-35
DIELECTRIC	TFE FLUOROCARBON PER ASTM-D-1457	N/A
RETAINING RING (OSM)	BERYLLIUM COPPER PER ASTM-B-194, ALLOY C17200, CONDITION H	N/A
RETAINING RING (TYPE N)	PHOSPHOR BRONZE PER QQ-B-750, GRADE B2	N/A
CONTACT EXT. BUSHING & CENTER CONTACT	BRASS PER ASTM-B-16, HALF HARD	GOLD PLATE PER MIL-G-45204
GASKET	SILICONE RUBBER PER ZZ-R-765	N/A
COMPONENT	MATERIAL	FINISH

.XXX = in
XX.X = mm (REF)

UNLESS OTHERWISE SPECIFIED DIMENSIONS ARE IN INCHES			DRAWN BY	DATE
FRAC.	DEC.	ANGLES	BWC	10-13-67
+ 1/64	+ .005	+ °	PRB	2-28-68
			RHF	2-29-68

These drawings and specifications are the property of M/A CDM Interconnect Div. and shall not be reproduced or copied or used in whole or in part as the basis for the manufacture or sale of (items) without written permission.

USE ASSY PROCEDURE
NO. A.P. N/A

AMP Incorporated	
140 Fourth Avenue	
Waltham, MA 02451-7599	

TITLE			
TYPE N PLUG TO OSM PLUG ADAPTER			
SIZE	CODE IDENT NO.		REV
B	26805	2081-2301-00	01 ₃
SCALE	3:1		SHEET 1 OF 1

CUSTOMER DRAWING

AMP PART # 1053646-1
SHEET 1 OF 1 REV B