

4

3

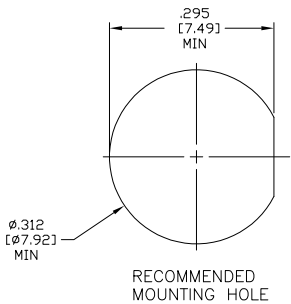
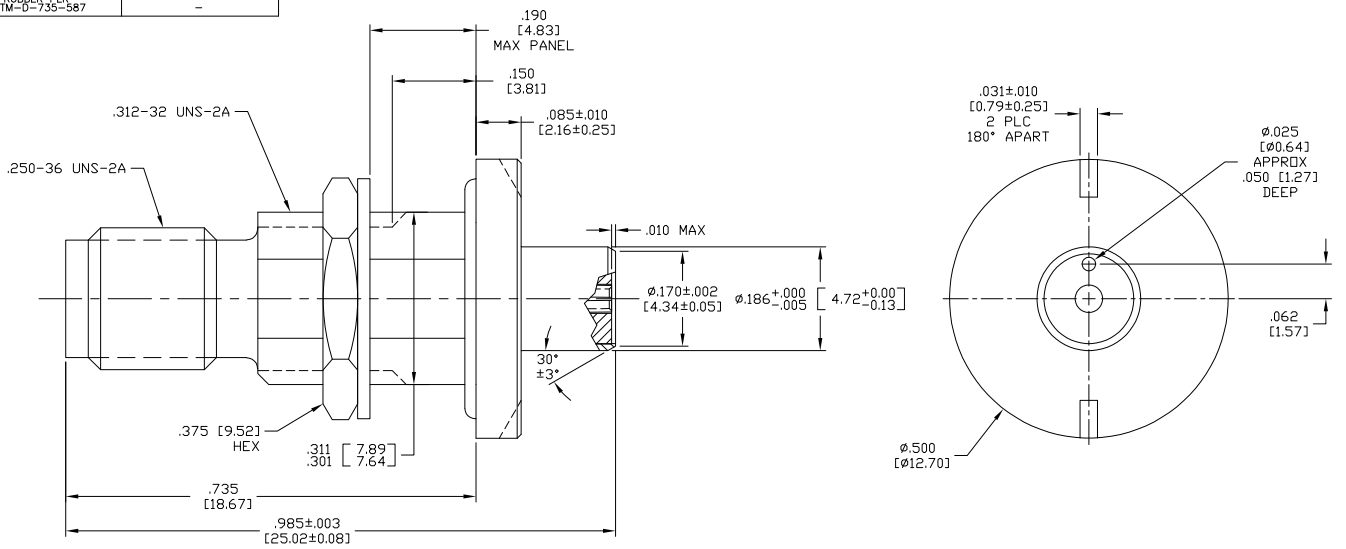
2

1

THIS DRAWING IS UNPUBLISHED. RELEASED FOR PUBLICATION. BY TYCO ELECTRONICS CORPORATION. ALL RIGHTS RESERVED.

COMPONENT	MATERIAL	FINISH
MOUNTING NUT HOUSING WASHER	STAINLESS STEEL PER ASTM-A-484 OR ASTM-A-582 TYPE 303	PASSIVATED PER ASTM-A-380
DIELECTRIC	PTFE FLUOROCARBON PER ASTM-D-484	-
CENTER CONTACT	BERYLLIUM COPPER PER ASTM-B-196 OR 197 ALLOY C17300, CONDITION H	GOLD PLATED PER ASTM-B-488
O-RING	ETHYLENE PROPYLENE RUBBER PER ASTM-D-735-587	-

LOC	DIST	REVISIONS				
DF	XO	P	LTR	DATE	MIN	APD
		D	REV PER	0H14-0046-03	10-03	CT FB



1081154-1  
PART  
NO.

THIS DRAWING IS A CONTROLLED DOCUMENT.		DR C.C. THOMAS	10-14-03	 Tyco Electronics Corporation Harrisburg, PA 17105	BULKHEAD FEED-THRU ADAPTER HERMETICALLY SEALED,RF
DIMENSIONS: INCHES		OK F. BLASIS	10-14-03		
DIMENSIONS: INCHES 0 PLC # - 1 PLC # - 2 PLC # - 3 PLC ± .005 [0.13] 4 PLC # - ANGLES # - FINISH SEE TABLE		PRODUCT SPEC: APPLICATION SPEC: WEIGHT: - CUSTOMER DRAWING		SIZE: A2 CASE CODE: 00779 DRAWING NO: 1081154	RESTRICTED TO: - SCALE: 8:1 SHEET: 1 OF 1 REV: D

AMP 1471-9 REV 31MM2000

H:\docmod\

11663286

A