

4

3

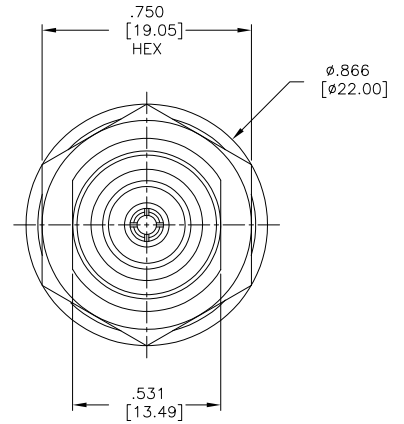
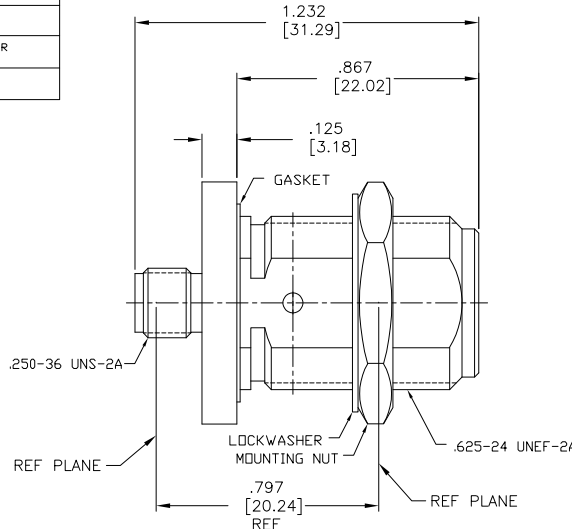
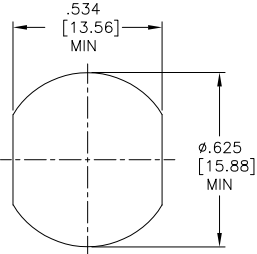
2

1

THIS DRAWING IS UNPUBLISHED. RELEASED FOR PUBLICATION - N/A
 © COPYRIGHT N/A BY TYCO ELECTRONICS CORPORATION. ALL RIGHTS RESERVED.

LOC	DIST	REVISIONS				
DF	XO	P	LTR	DATE	MIN	APPD
		O	RELEASED	11-19-04	CT	FB

COMPONENT	MATERIAL	FINISH
HOUSING MOUNTING NUT LOCKWASHER	STAINLESS STEEL PER ASTM-A484 AND ASTM-A582, TYPE 303	PASSIVATE PER ASTM-A388
DIELECTRIC	TFE FLUOROCARBON PER ASTM-D-1457	N/A
CENTER CONTACT	BRASS PER ASTM-B-16, HALF HARD	GOLD PLATE PER ASTM-B-488
GASKET	SILICONE RUBBER PER ZZ-R-765	N/A



ELECTRICAL	MECHANICAL	ENVIRONMENTAL
Nominal Impedance (Ohms) 50 Frequency Range (GHz) DC to 15 Volt Rating (VRMS MAX) @ Sea Level 335 VSWR DC - 12.4GHz: 1.06+0.005f(GHz) MAX 12.4 - 15.0GHz: .83+0.023f(GHz) MAX Insertion Loss (dB MAX) .18 @ 9GHz RF Leakage (dB MIN) -65 @ 2-3 GHz Corona, 70,000 Ft (VRMS MIN) 250 Dielectric Withstanding Voltage (VRMS MIN) @ Sea Level 1,000 Contact Resistance (Milliohms MAX) Center Contact 41 Outer Contact 22 Cable to Housing N/A RF High Potential @ Sea Level (VRMS MIN @ 5 MHz) 1,000 IR.(Megohms MIN) 5,000	Interface Dimensions MIL-STD-348A, Fig. 310.2 (DSM) & 304.2 (N) Recommended Mating Torque: DSM 7-10 in-lbs Type N 12-15 in-lbs Mating Characteristics DSM-Insertion (MAX lbs) 3.0 Type N-Insertion (MAX lbs) 2.0 DSM-Withdrawal (MIN oz) 1.0 Type N-Withdrawal (MIN oz) 2.0 Force to Engage and Disengage DSM (in-lbs MAX) 2.0 Type N (in-lbs MAX) 6.0 Center Contact Captivation Axial (lbs) 6.0 Radial (in-oz) 4.0 Cable Retention Axial Force (lbs) N/A Torque (in-oz) N/A Weight (Grams) TBD	TEMPERATURE RATING -65°C TO +125°C Vibration MIL-STD-202, Method 204, Condition B Shock MIL-STD-202, Method 213, Condition 1 Thermal Shock MIL-STD-202, Method 107, Condition C, EXCEPT HIGH TEMP SHALL BE +115°C Moisture Resistance MIL-STD-202, Method 106 Corrosion - MIL-STD-202, Method 101, Condition B, 5% salt spray

1663950-1
PART NUMBER

THIS DRAWING IS A CONTROLLED DOCUMENT.		DWG: C.C.THOMAS 19NOV2004 CHK: F.BLASIACK 11-19-04 APPD: F.BLASIACK 11-19-04 PRODUCT SPEC: - APPLICATION SPEC: - HEIGHT: - CUSTOMER DRAWING	Tyco Electronics Corporation Harrisburg, Pa 17105-3608 OSM JACK TO OSM JACK BULKHEAD FEED-THRU ADAPTER ASSY SIZE: A2 CASE CODE: 00779 DRAWING NO: 1663950 SCALE: 4:1 SHEET: 1 OF 1 REV: 0
--	--	---	--

AMP 1471-9 REV 31MM2000

1663950

A