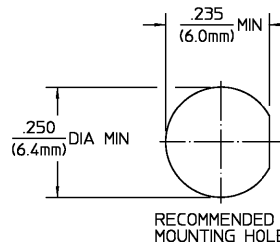


REVISIONS			
REV	DESCRIPTION	DATE	APPROVED
010	RELEASED	11/6/90	S.T.M.
011	VSWR 1.05 + .005(f)GHz WAS 1.08 + .008(f)GHz AND MATING TORQUE 7-10 In/Lbs WAS N/A PER ECN 91-0962	EFF 12/16/91	12-19-91



ELECTRICAL	MECHANICAL	ENVIRONMENTAL
Nominal Impedance (Ohms) 50	Interface Dimensions MIL-STD-348, Fig. 310.2	Temperature Rating -65°C to +165°C
Frequency Range (GHz) DC to 18	Recommended Mating Torque 7-10 In/Lbs	Vibration MIL-STD-202, Method 204, Condition D
Volt Rating (VRMS MAX) Sea Level 335	Mating Characteristics: Insertion (MAX Lbs) 3.0	Shock MIL-STD-202, Method 213, Condition I
VSWR 1.05+.005(f)GHz	Withdrawal (MIN Oz) 1.0	Thermal Shock MIL-STD-202, Method 107, Condition C
Insertion Loss (dB MAX) .06 √fGHz	Force to Engage and Disengage (In/Lbs MAX) 2.0	Moisture Resistance MIL-STD-202, Method 106, Except (7b) (Vibration) Shall Be Omitted
RF Leakage (dB MIN) -190 - f(GHz)	Center Contact Captivation Axial (Lbs) 10.0	Corrosion - MIL-STD-202, Method 101, Condition B, 5% salt spray
Corona, 70,000 Ft (VRMS MIN) 250	Radial (In/Oz) N/A	
Dielectric Withstanding Voltage (VRMS MIN @ Sea Level) 1000	Weight (Grams) TBD	
Contact Resistance (Milliohms MAX) Center Contact 4.0		
Outer Contact 2.0		
RF High Potential @ Sea Level (VRMS MIN @ 5 MHz) 670		
IR (Megohms MIN) 10,000		

COMPONENT	MATERIAL	FINISH																											
HOUSING MOUNTING NUT LOCKWASHER	STAINLESS STEEL PER ASTM-A484 AND ASTM-A582, TYPE 303	PASSIVATE PER ASTM-A380																											
DIELECTRIC	TFE FLUOROCARBON PER ASTM-D-1457	N/A																											
CENTER CONTACT	BERYLLIUM COPPER PER ASTM B 196, ALLOY C17300, CONDITION H	GOLD PLATE PER MIL-G-45204 OVER COPPER PLATE PER MIL-C-14550																											
<table border="1"> <tr> <td>UNLESS OTHERWISE SPECIFIED DIMENSIONS ARE IN INCHES</td> <td> <table border="1"> <tr> <td>DRAWN BY</td> <td>DATE</td> </tr> <tr> <td>E.F. HOYLE</td> <td>10/26/90</td> </tr> <tr> <td>CHECKED BY</td> <td></td> </tr> <tr> <td>K.C. MAHER</td> <td>11/5/90</td> </tr> <tr> <td>APPROVED BY</td> <td></td> </tr> <tr> <td>S.T.M.</td> <td>11/6/90</td> </tr> </table> </td> <td> AMP Incorporated 140 Fourth Avenue Waltham, MA 02451-7599 </td> </tr> <tr> <td colspan="3"> TITLE OSM JACK TO JACK ADAPTER BULKHEAD FEEDTHROUGH </td> </tr> <tr> <td> USE ASSY PROCEDURE NO. AP. N/A </td> <td> <table border="1"> <tr> <td>SIZE</td> <td>CODE IDENT NO.</td> <td>REV</td> </tr> <tr> <td>B</td> <td>26805</td> <td>011</td> </tr> </table> </td> <td> SCALE 5:1 SHEET 1 OF 1 </td> </tr> </table>			UNLESS OTHERWISE SPECIFIED DIMENSIONS ARE IN INCHES	<table border="1"> <tr> <td>DRAWN BY</td> <td>DATE</td> </tr> <tr> <td>E.F. HOYLE</td> <td>10/26/90</td> </tr> <tr> <td>CHECKED BY</td> <td></td> </tr> <tr> <td>K.C. MAHER</td> <td>11/5/90</td> </tr> <tr> <td>APPROVED BY</td> <td></td> </tr> <tr> <td>S.T.M.</td> <td>11/6/90</td> </tr> </table>	DRAWN BY	DATE	E.F. HOYLE	10/26/90	CHECKED BY		K.C. MAHER	11/5/90	APPROVED BY		S.T.M.	11/6/90	AMP Incorporated 140 Fourth Avenue Waltham, MA 02451-7599	TITLE OSM JACK TO JACK ADAPTER BULKHEAD FEEDTHROUGH			USE ASSY PROCEDURE NO. AP. N/A	<table border="1"> <tr> <td>SIZE</td> <td>CODE IDENT NO.</td> <td>REV</td> </tr> <tr> <td>B</td> <td>26805</td> <td>011</td> </tr> </table>	SIZE	CODE IDENT NO.	REV	B	26805	011	SCALE 5:1 SHEET 1 OF 1
UNLESS OTHERWISE SPECIFIED DIMENSIONS ARE IN INCHES	<table border="1"> <tr> <td>DRAWN BY</td> <td>DATE</td> </tr> <tr> <td>E.F. HOYLE</td> <td>10/26/90</td> </tr> <tr> <td>CHECKED BY</td> <td></td> </tr> <tr> <td>K.C. MAHER</td> <td>11/5/90</td> </tr> <tr> <td>APPROVED BY</td> <td></td> </tr> <tr> <td>S.T.M.</td> <td>11/6/90</td> </tr> </table>	DRAWN BY	DATE	E.F. HOYLE	10/26/90	CHECKED BY		K.C. MAHER	11/5/90	APPROVED BY		S.T.M.	11/6/90	AMP Incorporated 140 Fourth Avenue Waltham, MA 02451-7599															
DRAWN BY	DATE																												
E.F. HOYLE	10/26/90																												
CHECKED BY																													
K.C. MAHER	11/5/90																												
APPROVED BY																													
S.T.M.	11/6/90																												
TITLE OSM JACK TO JACK ADAPTER BULKHEAD FEEDTHROUGH																													
USE ASSY PROCEDURE NO. AP. N/A	<table border="1"> <tr> <td>SIZE</td> <td>CODE IDENT NO.</td> <td>REV</td> </tr> <tr> <td>B</td> <td>26805</td> <td>011</td> </tr> </table>	SIZE	CODE IDENT NO.	REV	B	26805	011	SCALE 5:1 SHEET 1 OF 1																					
SIZE	CODE IDENT NO.	REV																											
B	26805	011																											

CUSTOMER DRAWING

AMP PART # 1054881-1
SHEET 1 OF 1 REV A