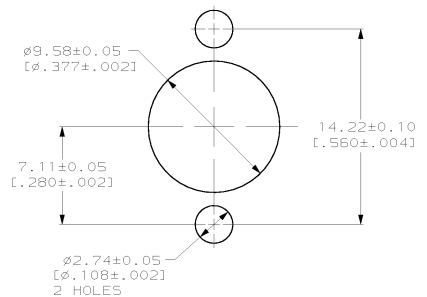


- 1 BERYLLIUM COPPER PER ASTM-B-196
- 2 PTFE PER ASTM-D-1710
- 3 STEEL WIRE PER QQ-W-470
- 4 BRASS PER ASTM-B-16
- 5 GOLD PL PER MIL-G-45204
- 6 NICKEL PL PER QQ-N-290
- 7 .190 MAX PANEL THICKNESS
- 8 .060 MAX FLOAT PERMITTED DUE TO INTERNAL SPRING
- 9 STAINLESS STEEL PER ASTM-A-582.
- 10 PASSIVATED PER QQ-P-35.
- 11 BOILLAT B05 PER UNS 53800



RECOMMENDED MOUNTING HOLES

448435-2	448435-1
SHELL MATERIAL/FINISH	PART NUMBER

THIS DRAWING IS A CONTROLLED DOCUMENT.		DWG. NO. 0'BEINE 31MAY00	<b>AMP</b>	AMP Incorporated
CHECKED BY J. HAVENER 31MAY00		DATE 31MAY00		Harrisburg, PA 17105-3608
DESIGNED BY J. HAVENER 31MAY00		PRODUCT SPEC. 31MAY00	ADAPTER, PLUG, FLOATING, 3.5mm BLIND MATE TO JACK, BNC	
DIMENSIONS: mm (INCHES)		APPROVED BY J. HAVENER 31MAY00	STUD. CASE CODE DRAWING NO. A200779	RESTRICTED TO
TOLERANCES UNLESS OTHERWISE SPECIFIED:		APPLICATION SPEC. -	448435	-
MATERIAL FINISH:		REWORK -	SCALE 5:1	SHEET 1 OF 1
THRU		CUSTOMER DRAWING	REV B	