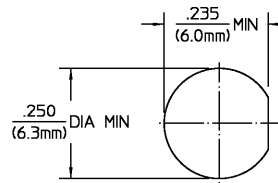


REVISIONS			
REV	DESCRIPTION	DATE	APPROVED
010	RELEASED	3/9/95	<i>ICornell</i>



RECOMMENDED MOUNTING HOLE  
DESIGN CONTROL REQUIRED

ELECTRICAL	MECHANICAL	ENVIRONMENTAL
Nominal Impedance (Ohms) 50	Interface Dimensions MIL-STD-348A, Fig. 310.2 BOTH ENDS	Temperature Rating -65°C to +125°C
Frequency Range (GHz) DC to 18	Recommended Mating Torque N/A	Vibration MIL-STD-202, Method 204, Condition D.
Volt Rating (VRMS MAX) Sea Level 335	Mating Characteristics:	Shock MIL-STD-202, Method 213, Condition I.
VSWR 1.05 ±.005	Insertion (MAX Lbs) 3.0	Thermal Shock MIL-STD-202, Method 107, Condition C, except high temp shall be +115°C.
Insertion Loss (dB MAX) .03 √(GHz)	Withdrawal (MIN Oz) 1.0	Moisture Resistance MIL-STD-202, Method 106
RF Leakage (dB MIN) 60 @ 2 to 3 GHz	Force to Engage and Disengage (In-Lbs MAX) 2.0	Corrosion - MIL-STD-202, Method 101, Condition B, 5% salt spray
Corona, 70,000 Ft (VRMS MIN) 250	Center Contact Captivation	
Dielectric Withstanding Voltage (VRMS MIN) Sea Level 1500	Axial (Lbs) 6.0	
Contact Resistance (Milliohms MAX)	Radial (In-Oz) 4.0	
Center Contact 4.0	Cable Retention	
Outer Contact 2.0	Axial Force (Lbs) N/A	
Cable to Housing N/A	Torque (In-Oz) N/A	
RF High Potential @ Sea Level (VRMS MIN @ 5 MHz) 670	Weight (Grams) 3.8	
IR (Megohms MIN) 5,000		

COMPONENT	MATERIAL	FINISH
HOUSING	STAINLESS STEEL PER ASTM-A484 AND ASTM-A582, TYPE 303	GOLD PLATE PER MIL-G-45204
DIELECTRIC	TFE FLUOROCARBON PER ASTM-D-1457	N/A
CENTER CONTACT	BERYLLIUM COPPER PER ASTM B 196, ALLOY C17300, CONDITION H	GOLD PLATE PER MIL-G-45204

UNLESS OTHERWISE SPECIFIED DIMENSIONS ARE IN INCHES TOLERANCE ON	DRAWN BY <i>ICornell</i> DATE 3/9/95	AMP Incorporated
FRAC. DEC. ANGLES ± 1/64 ±.005 ± *	CHECKED BY <i>ICornell</i>	140 Fourth Avenue Waltham, MA 02451-7599
These drawings and specifications are the property of N/A-COM Incorporated and shall not be reproduced or copied or used in whole or in part as the basis for the manufacture or sale of items without written permission.	APPROVED BY <i>ICornell</i> 3/9/95	<b>AMP</b>
	USE ASSY PROCEDURE	TITLE OSM BULKHEAD FEEDTHROUGH JACK TO JACK ADAPTER
	NO. AP. N/A	SIZE B CODE IDENT NO. 1250-1251-00 REV 010
		SCALE 5:1 SHEET 1 OF 1

CUSTOMER DRAWING

AMP PART # 1046248-1  
SHEET 1 OF 1 REV A