

4

3

2

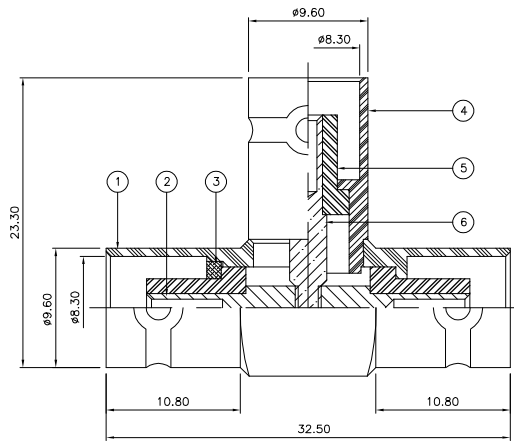
1

THIS DRAWING IS UNPUBLISHED. RELEASED FOR PUBLICATION JUNE, 2006.
 COPYRIGHT 2006 BY TYCO ELECTRONICS CORPORATION. ALL RIGHTS RESERVED.

LOC	DIST	REVISIONS			
P	LTR	DESCRIPTION	DATE	DWN	APVD
	B	ECR-06-013423	13JUN06	JMS	FWK

NOTES:

- 1 PACK IN ACCORDANCE WITH AMP SPEC 107-3275
- 2 100 TRAY PACK IN ACCORDANCE WITH AMP SPEC 107-3275
- 3 Au PLATING
- 4 Ni PLATING
- 5 ELECTRICAL CHARACTERISTICS
 - FREQUENCY RANGE: DC - 4 GHz
 - NOMINAL IMPEDANCE: 50 Ohm
 - INSULATION RESISTANCE: 5000 MOhm
 - WORKING VOLTAGE: 500 Volts RMS at Sea Level
 - DIELECTRIC WITHSTAND VOLTAGE: 1500 Volts RMS Max
 - CONTACT RESISTANCE:
 - CENTRE CONTACT: 1.50 mOhm Max
 - OUTER CONTACT: 0.20 mOhm Max
 - VSWR @ xGHz: N/A
 - INSERTION LOSS xdb: N/A
- 6 MECHANICAL CHARACTERISTICS
 - COUPLING RETENTION FORCE: N/A
 - CABLE RETENTION FORCE: N/A
 - DURABILITY: 500 Cycles Min
- 7 ENVIRONMENTAL CHARACTERISTICS
 - OPERATING TEMPERATURE: -65 to +165 DegC
- 8 FOR TECHNICAL DATA REFER TO YOUR LOCAL TYCO ELECTRONICS SALES OFFICE
- 9 ALL DIMENSIONS ARE NOMINAL FOR REFERENCE ONLY UNLESS OTHERWISE STATED



QTY	UNIT	MATERIAL	DESCRIPTION	ITEM
1	1	BRASS	CONTACT II	6
3	3	PTFE	INSULATION	5
1	1	BRASS	BODY 2	4
1	1	BRASS	WASHER	3
1	1	BRASS	CONTACT I	2
1	1	BRASS	BODY 1	1
6--0	1--0	MATERIAL	DESCRIPTION	ITEM

QUANTITY PER ASSY		PARTS LIST	
1	1	BRASS	CONTACT II
3	3	PTFE	INSULATION
1	1	BRASS	BODY 2
1	1	BRASS	WASHER
1	1	BRASS	CONTACT I
1	1	BRASS	BODY 1
6--0	1--0	MATERIAL	DESCRIPTION
1		1	

THIS DRAWING IS A CONTROLLED DOCUMENT.		DWN	J. SANDWELL	13JUN06
DIMENSIONS:		CHK	S. PARLOW	13JUN06
mm		APVD	F. WHEELER-KING	13JUN06
TOLERANCES UNLESS OTHERWISE SPECIFIED:		PRODUCT SPEC		
0 PLC	± .00	APPLICATION SPEC		
1 PLC	± .01	WEIGHT		
2 PLC	± .02	CUSTOMER DRAWING		
3 PLC	± .03	SCALE		
4 PLC	± .04	SHEET		
ANGLES	± .05	REV		
MATERIAL	FINISH	SEE TABLE		

Tyco Electronics Corporation			
Bideford EX39 4HE			
NAME			
BNC TEE ADAPTOR J-J 50 OHM			
SIZE	CAGE CODE	DRAWING NO	RESTRICTED TO
A3	00779	1478040	
SCALE		NTS	SHEET 1 OF 1
REV		B	