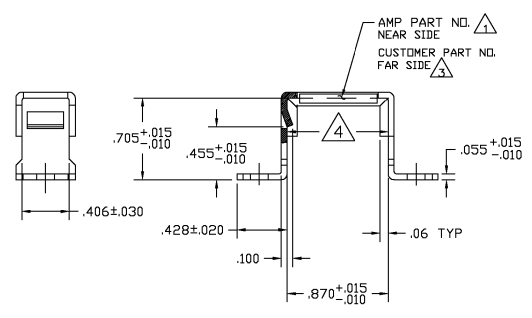
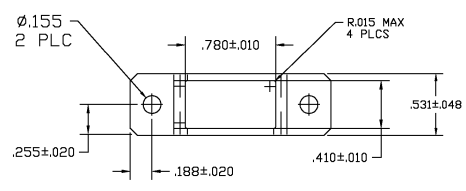


4 3 2 1

THIS DRAWING IS UNPUBLISHED. RELEASED FOR PUBLICATION BY AMP INCORPORATED. ALL RIGHTS RESERVED. COPYRIGHT 19

LOC		REVISIONS			
DF	A0	REV	DESCRIPTION	DATE	BY
		B	REV & REDRAWN;0G3D-0167-00	4-00	CT DM



ELECTROLESS NICKEL PER QQ-N-290	ALUMINUM ALLOY 6061-T4	-----	591637-9
BLACK ANODIZED PER MIL-A-8625 TYPE II, CLASS 2	ALUMINUM ALLOY 6061-T4	8400-041-0020	591637-5
BLACK ANODIZED PER MIL-A-8625 TYPE II, CLASS 2	ALUMINUM ALLOY 6061-T4	53711-5190993	591637-4
BLACK ANODIZED PER MIL-A-8625 TYPE II, CLASS 2	ALUMINUM ALLOY 6061-T4	19207-12301876	591637-3
BLACK ANODIZED PER MIL-A-8625 TYPE II, CLASS 2	ALUMINUM ALLOY 6061-T4	19207-12283284	591637-2
BLACK ANODIZED PER MIL-A-8625 TYPE II, CLASS 2	ALUMINUM ALLOY 6061-T4	-----	591637-1
FINISH	MATERIAL	CUSTOMER NO. 3	PART NUMBER

- 1 \*AMP\*, AMP PART NO. AND DATE CODE MARKED WITH .060 MINIMUM HIGH CHARACTERS AT APPROXIMATE AREA SHOWN.
- 2. THIS FRAME ASSEMBLY ACCOMMODATES SIZE 22, 20 AND 16 FEED-BACK MODULE FOR SINGLE MODULE MOUNTING.
- 3 CUSTOMER PART NO. MARKED ( IF REQUIRED ) WITH .060 MINIMUM HIGH CHARACTERS AT APPROXIMATE AREA SHOWN.
- 4 MEASUREMENT POINT OF .870+0.015/-0.010 DIMENSION.

THIS DRAWING IS A CONTROLLED DOCUMENT.

DESIGNED BY: C.G. THOMAS	DATE: 4-25-00	AMP Incorporated Harrisburg, PA 17105-3608
DRAWN BY: D. MILLER	DATE: 4-25-00	
CHECKED BY: D. MILLER	DATE: 4-25-00	BRACKET, GROUNDING MODULE ASSEMBLY, TJ
APPLICATION SPEC: ---	SIZE: A2	CAGE CODE: 00779
WEIGHT: ---	DRAWING NO: 591637	RESTRICTED TO: ---
CUSTOMER DRAWING	SCALE: 2:1	SHEET 1 OF 1 REV B