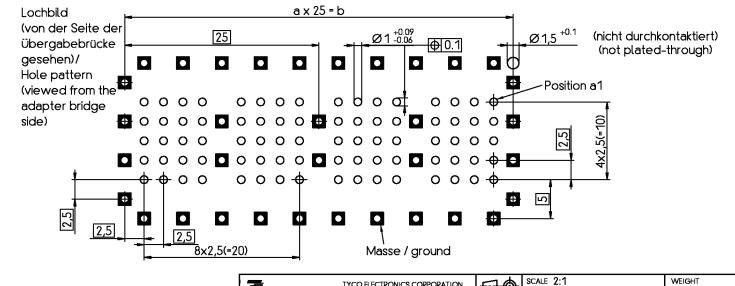
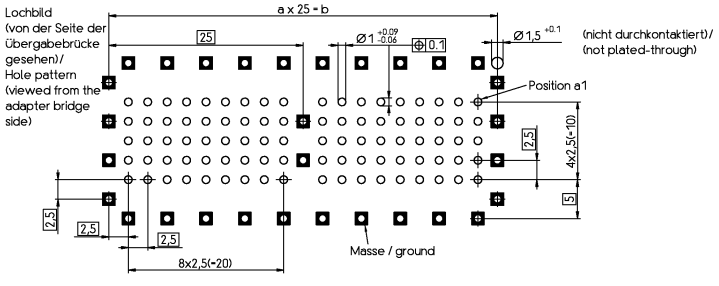


Sachnummer/ partnumber	a x 25 - b
-C11***-B101	1 x 25 - 25
-C12***-B101	2 x 25 - 50
-C13***-B101	3 x 25 - 75
-C14***-B101	4 x 25 - 100
-C15***-B101	5 x 25 - 125
-C16***-B101	6 x 25 - 150
-C17***-B101	7 x 25 - 175
-C18***-B101	8 x 25 - 200
-C19***-B101	9 x 25 - 225
-C10***-B101	10 x 25 - 250

Sachnummer/ partnumber	a x 25 - b
-C11***-A101	1 x 25 - 25
-C12***-A101	2 x 25 - 50
-C13***-A101	3 x 25 - 75
-C14***-A101	4 x 25 - 100
-C15***-A101	5 x 25 - 125
-C16***-A101	6 x 25 - 150
-C17***-A101	7 x 25 - 175
-C18***-A101	8 x 25 - 200
-C19***-A101	9 x 25 - 225
-C10***-A101	10 x 25 - 250

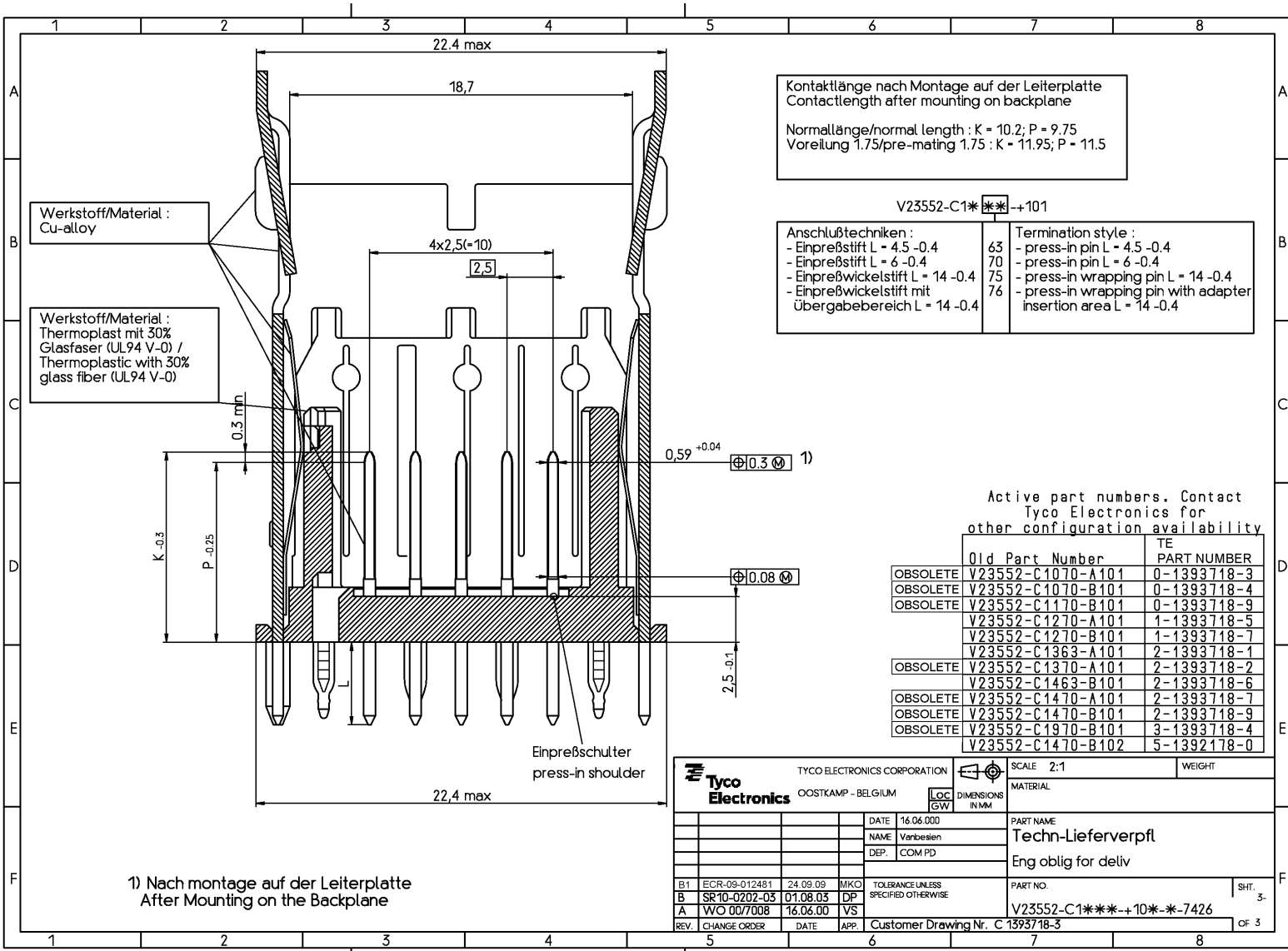


THIS INFORMATION IS CONFIDENTIAL AND PROPRIETARY TO TYCO ELECTRONICS CORPORATION AND ITS WORLDWIDE SUBSIDIARIES AND AFFILIATES. IT MAY NOT BE DISCLOSED TO ANYONE, OTHER THAN TYCO ELECTRONICS PERSONNEL, WITHOUT WRITTEN AUTHORIZATION FROM TYCO ELECTRONICS CORPORATION, HARRISBURG PENNSYLVANIA USA.

		TYCO ELECTRONICS CORPORATION OOSTKAMP - BELGIUM	SCALE 2:1 MATERIAL	WEIGHT
DATE 16.06.00 NAME Verbesen APP CCOM PD		DIMENSIONS IN MM	PART NAME Techn-Lieferverpft Eng oblig for deliv	
B1 ECR-09-012481 24.09.09 MKO TOLERANCES UNLESS SPECIFIED OTHERWISE B ISE 10-0907-05 01.08.03 DP A WCO 007708 16.06.00 VS		PART NO. V23552-C1***-10***-7426		
REV CHANGE ORDER DATE APP Customer Drawing Nr. C-199718-5		SHEET 1 OF 5		

THIS INFORMATION IS CONFIDENTIAL AND PROPRIETARY TO TYCO ELECTRONICS CORPORATION AND ITS WORLDWIDE SUBSIDIARIES AND AFFILIATES. IT MAY NOT BE DISCLOSED TO ANYONE, OTHER THAN TYCO ELECTRONICS PERSONNEL, WITHOUT WRITTEN AUTHORIZATION FROM TYCO ELECTRONICS CORPORATION, HARRISBURG PENNSYLVANIA USA.

PROPRIETARY:



Kontaktlänge nach Montage auf der Leiterplatte
 Contactlength after mounting on backplane
 Normallänge/normal length : K = 10.2; P = 9.75
 Voreilung 1.75/pre-mating 1.75 : K = 11.95; P = 11.5

V23552-C1***+101	
Anschlußtechniken : - Einpreßstift L = 4.5 -0.4 - Einpreßstift L = 6 -0.4 - Einpreßwickelstift L = 14 -0.4 - Einpreßwickelstift mit Übergabebereich L = 14 -0.4	Termination style : - press-in pin L = 4.5 -0.4 - press-in pin L = 6 -0.4 - press-in wrapping pin L = 14 -0.4 - press-in wrapping pin with adapter insertion area L = 14 -0.4

Active part numbers. Contact Tyco Electronics for other configuration availability

	Old Part Number	TE PART NUMBER
OBSOLETE	V23552-C1070-A101	0-1393718-3
OBSOLETE	V23552-C1070-B101	0-1393718-4
OBSOLETE	V23552-C1170-B101	0-1393718-9
	V23552-C1270-A101	1-1393718-5
	V23552-C1270-B101	1-1393718-7
	V23552-C1363-A101	2-1393718-1
OBSOLETE	V23552-C1370-A101	2-1393718-2
	V23552-C1463-B101	2-1393718-6
OBSOLETE	V23552-C1470-A101	2-1393718-7
OBSOLETE	V23552-C1470-B101	2-1393718-9
OBSOLETE	V23552-C1970-B101	3-1393718-4
	V23552-C1470-B102	5-1392178-0

1) Nach montage auf der Leiterplatte
 After mounting on the Backplane

Tyco Electronics TYCO ELECTRONICS CORPORATION OOSTKAMP - BELGIUM		SCALE 2:1 WEIGHT
DATE 16.06.000 NAME Vanbesen DEP. CCM PD		MATERIAL PART NAME Techn-Lieferverpfl Eng oblig for deliv
B1 ECR-09-012481 24.09.09 MKO B SR10-0202-05 01.08.05 DP A WVO 00/7008 16.06.00 VS		PART NO. V23552-C1***+10*-*-7426
REV. CHANGE ORDER DATE APP. Customer Drawing Nr. C 1393718-3		SHT. 3. OF 3