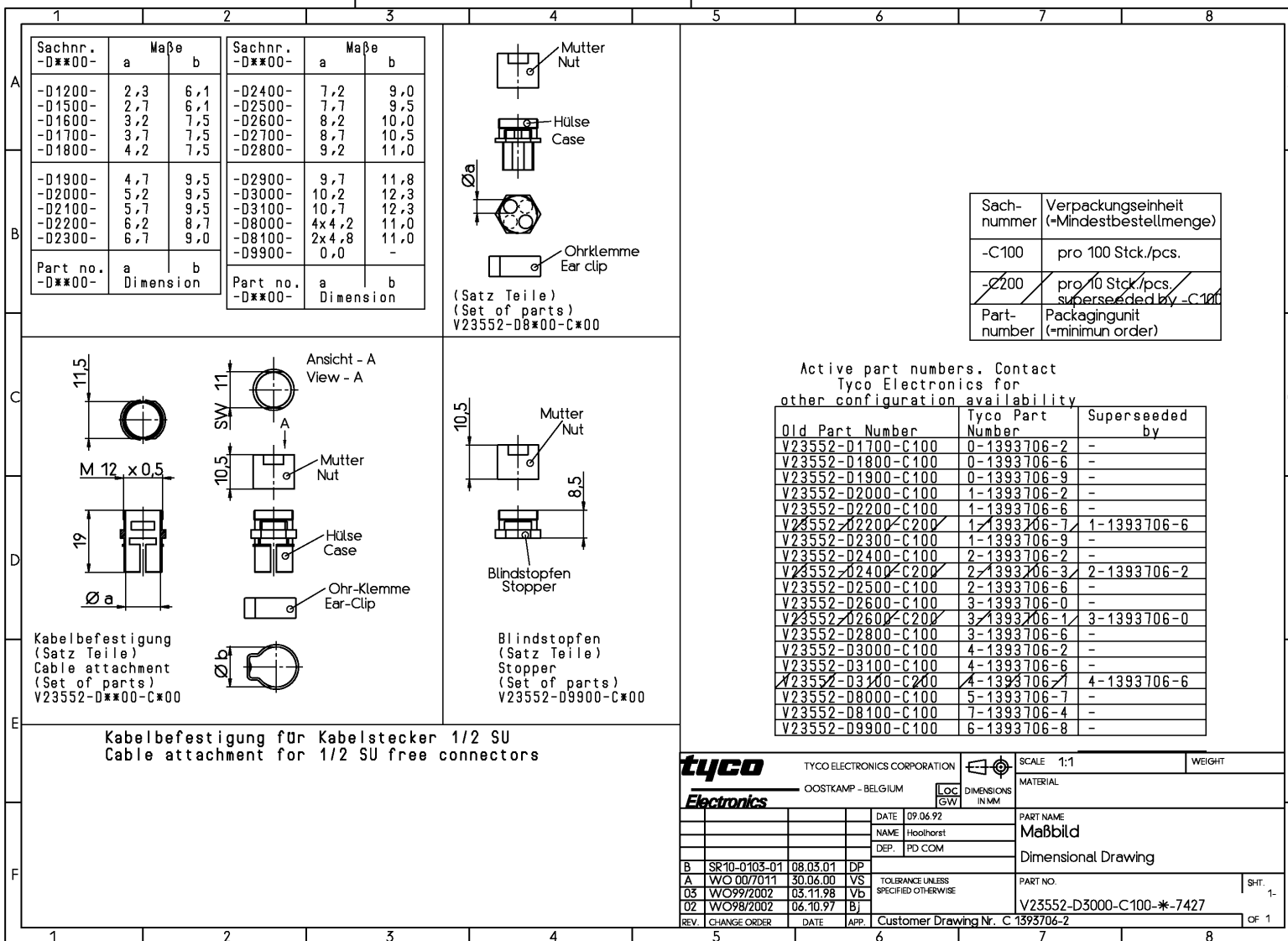
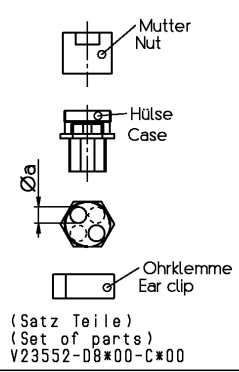


PROPRIETARY: THIS INFORMATION IS CONFIDENTIAL AND PROPRIETARY TO TYCO ELECTRONICS CORPORATION AND ITS WORLDWIDE SUBSIDIARIES AND AFFILIATES. IT MAY NOT BE DISCLOSED TO ANYONE OTHER THAN TYCO ELECTRONICS PERSONNEL WITHOUT WRITTEN AUTHORIZATION FROM TYCO ELECTRONICS CORPORATION, HARRISBURG, PENNSYLVANIA, USA.



Sachnr. -D**00-	Maße		Sachnr. -D**00-	Maße	
	a	b		a	b
-D1200-	2,3	6,1	-D2400-	7,2	9,0
-D1500-	2,7	6,1	-D2500-	7,7	9,5
-D1600-	3,2	7,5	-D2600-	8,2	10,0
-D1700-	3,7	7,5	-D2700-	8,7	10,5
-D1800-	4,2	7,5	-D2800-	9,2	11,0
-D1900-	4,7	9,5	-D2900-	9,7	11,8
-D2000-	5,2	9,5	-D3000-	10,2	12,3
-D2100-	5,7	9,5	-D3100-	10,7	12,3
-D2200-	6,2	8,7	-D8000-	4x4,2	11,0
-D2300-	6,7	9,0	-D8100-	2x4,8	11,0
			-D9900-	0,0	-



Sachnummer	Verpackungseinheit (=Mindestbestellmenge)
-C100	pro 100 Stck./pcs.
-C200	pro 10 Stck./pcs. superseded by -C100
Part-number	Packagingunit (=minimum order)

Active part numbers. Contact Tyco Electronics for other configuration availability

Old Part Number	Tyco Part Number	Superseded by
V23552-D1700-C100	0-1393706-2	-
V23552-D1800-C100	0-1393706-6	-
V23552-D1900-C100	0-1393706-9	-
V23552-D2000-C100	1-1393706-2	-
V23552-D2200-C100	1-1393706-6	-
V23552-D2200-C200	1-1393706-7	1-1393706-6
V23552-D2300-C100	1-1393706-9	-
V23552-D2400-C100	2-1393706-2	-
V23552-D2400-C200	2-1393706-3	2-1393706-2
V23552-D2500-C100	2-1393706-6	-
V23552-D2600-C100	3-1393706-0	-
V23552-D2600-C200	3-1393706-1	3-1393706-0
V23552-D2800-C100	3-1393706-6	-
V23552-D3000-C100	4-1393706-2	-
V23552-D3100-C100	4-1393706-6	-
V23552-D3100-C200	4-1393706-7	4-1393706-6
V23552-D8000-C100	5-1393706-7	-
V23552-D8100-C100	7-1393706-4	-
V23552-D9900-C100	6-1393706-8	-

tyco Electronics TYCO ELECTRONICS CORPORATION OOSTKAMP - BELGIUM

SCALE: 1:1 WEIGHT: _____

MATERIAL: _____

DATE: 09.06.92 NAME: Hoolhorst DEPT: PD COM

PART NAME: **Maßbild**

Dimensional Drawing

PART NO.: V23552-D3000-C100-*7427

REV. CHANGE ORDER DATE APP. Customer Drawing Nr. C 1393706-2

SHT. 1- OF 1