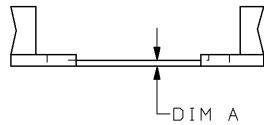
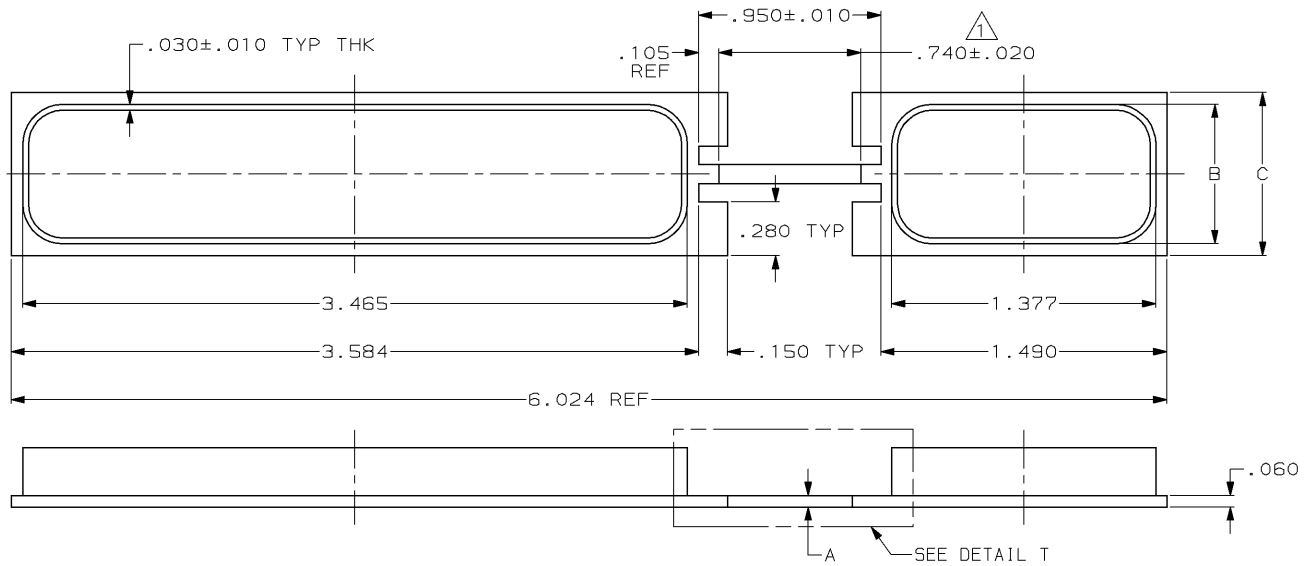


DRAWING MADE IN THIRD ANGLE PROJECTION

THIS DRAWING IS UNPUBLISHED. RELEASED FOR PUBLICATION, 19
 © COPYRIGHT 19 BY AMP INCORPORATED. ALL INTERNATIONAL RIGHTS RESERVED.

LOC	DIST	P	F	ZONE	LTR	DESCRIPTION	DATE	APPD
DF	A0				F	REV PER 0600-1583-94 TT	03-94	RG
					G	REV PER 0600-5176-96 TA	3-97	AS

1 DIM B HELD OVER THIS LENGTH FOR 211600-2 ONLY.



DETAIL T
FOR 211600-2 ONLY

2 & 3	1.450	.1.329	.030	211600-2
1	.850	.727	.060	211600-1
CONN SIZE	C	B	A	PART NUMBER

DO NOT SCALE PRINT. UNLESS SPECIFIED DIMENSIONS IN mm (INCHES) TOLERANCES ON: 2 PLC DEC ± .015 ANGLES ± °	DR	03-08-94 T. THOMPSON
	CHK	03-08-94 S. WRIGHT
	APPD	03-08-94 S. WRIGHT
	REL	03-08-94 T. THOMPSON
	MATERIAL	CONDUCTIVE THERMOPLASTIC
FINISH	-	
WEIGHT	-	

AMP AMP Incorporated Harrisburg, PA 17105-3608		
NAME DUST COVER, ARINC 600, PLUG AND RECEPTACLE		
SIZE B	CAGE CODE 00779	DRAWING NO C=211600
SCALE 2:1		SHEET 1 OF 1

THIS DRAWING IS A CONTROLLED DOCUMENT FOR AMP INCORPORATED. IT IS SUBJECT TO CHANGE AND THE CONTROLLING ENGINEERING ORGANIZATION SHOULD BE CONTACTED FOR THE LATEST REVISION.