

4

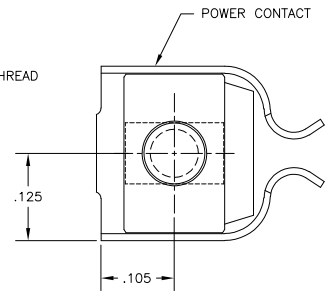
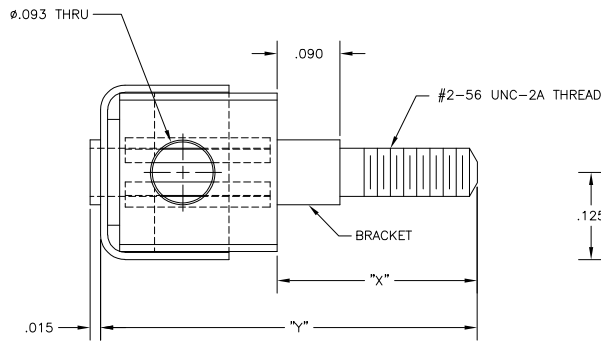
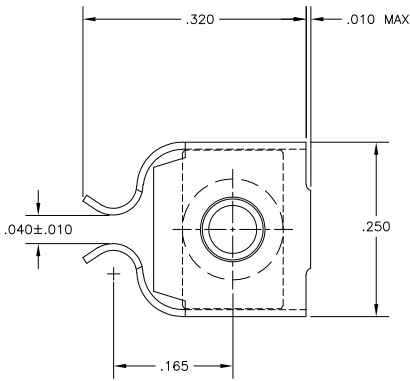
3

2

1

THIS DRAWING IS UNPUBLISHED. RELEASED FOR PUBLICATION
 © COPYRIGHT 2005 BY TYCO ELECTRONICS CORPORATION. ALL RIGHTS RESERVED.

LOC	DIST	REVISIONS		
P	BY	DESCRIPTION	DATE	APP'D
B		REVISED PER EON 0512-0553-04	30MAR06	JDP/DRD



- 1 CONTACT MATERIAL: PHOSPHOR BRONZE.
- 2 BRACKET MATERIAL: BRASS
- 3 CONTACT FINISH: .00030 GOLD IN CONTACT AREA, OVER .000050 MIN NICKEL UNDERPLATE. GOLD FLASH ON REMAINDER OF THE CONTACT.
- 4 BRACKET FINISH: .000020 GOLD FLASH, OVER .000050 MIN NICKEL UNDERPLATE. OPTIONAL COPPER FLASH UNDER NICKEL.

OBSOLETE	.618	.375	535875-3
	.533	.290	535875-2
	.483	.240	535875-1
	"Y"	"X"	PART NUMBER

THIS DRAWING IS A CONTROLLED DOCUMENT. DIM: C. LAUBACH 310C12005
 OK: D. DIXON 11-1-05
 APP'D: D. DIXON 11-1-05
 NAME: D. DIXON
 PRODUCT SPEC: —
 APPLICATION SPEC: —
 WEIGHT: —

310C12005
 Tyco Electronics Corporation
 Harrisburg, PA 17105-3608

GUIDE POWER RECEPTACLE ASSEMBLY

SIZE: A2 CASE CODE: 00779 DRAWING NO: C-535875
 RESTRICTED TO: —

CUSTOMER DRAWING SCALE: 10:1 SHEET: 1 of 1 REV: B

AMP 1471-9 REV 31MM2000

535875

A