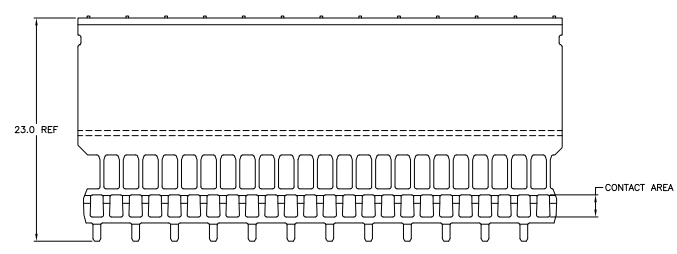
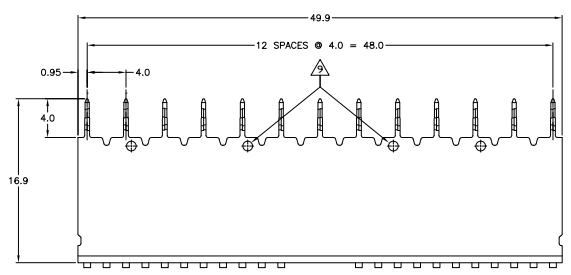
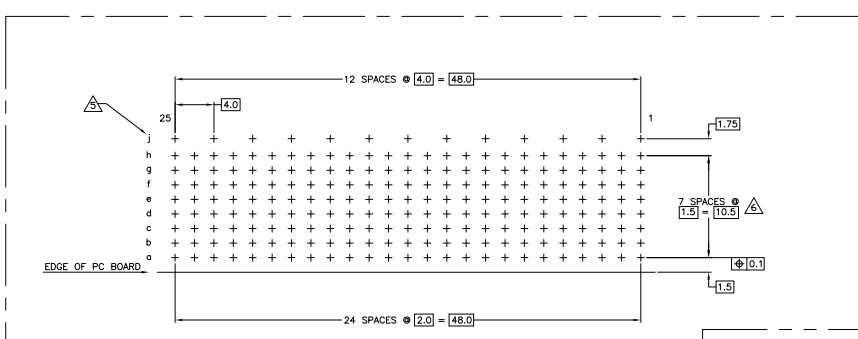
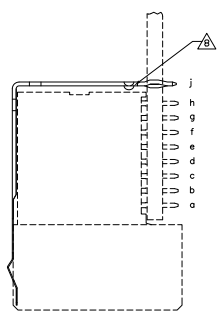


REVISONS		DATE	BY	APP'D
AD	00			
G		210607	DH	JE
G1		150410	KK	AEC



- ⚠ MATERIAL: PHOSPHOR BRONZE.
- ⚠ GENERAL PLATING SPECIFICATION: UNDERPLATING (ENTIRE CONTACT); 1.27µm MIN NICKEL AND ACTION FIN; 0.5µm MIN TIN/LEAD. FOR PLATING OF MATING SURFACES SEE APPLICABLE SPECIFICATION REFERENCE FOR EACH DASH NUMBER.
- ⚠ CONFORMS TO ALL TESTING ACCORDING TO IEC 61076-4-101 PERFORMANCE LEVEL 2.
- ⚠ CONNECTOR TESTED AND QUALIFIED AGAINST TELCORDIA GR-1217-CORE QUALITY LEVEL 3, CENTRAL OFFICE APPLICATIONS.
- ⚠ ROW J 13 PLATED THROUGH HOLES FOR UPPER-SHIELD.
- ⚠ HOLE PATTERN FOR FEMALE CONNECTOR TYPE A, 200 PLATED-THROUGH HOLES A 1.5 X 2mm GRID.
- ⚠ CONTACT AREA LUBRICATED WITH BELLCORE APPROVED LUBRICANT. TECHNICAL REFERENCE: GR-1217-CORE, ISSUE 1, NOVEMBER 1995.
- ⚠ P/N 646429-2 DOES NOT HAVE EMBOSSEMENTS.
- ⚠ OPTIONAL DIMPLES AT DISCRETION OF DIE ENGINEER.
- ⚠ OBSOLETE PARTS: OBSOLETE CIS STREAMLINING PER D.RENAUD/D.SINISI



COMPONENT SIDE AS SHOWN
 RECOMMENDED PCB-HOLE LAYOUT

PLATED THRU HOLES PARAMETERS
 REFERENCE APPLICATION SPECIFICATION

⚠ OBSOLETE	⚠	⚠	⚠	⚠	-646429-0
	⚠	⚠	⚠	⚠	646429-2
	⚠	⚠	⚠	⚠	646429-1
					FINISH PART NUMBER

THIS DRAWING IS A CONTROLLED DOCUMENT.		DESIGNED BY	DATE	REVISED BY	DATE	REVISED BY	DATE	REVISED BY	DATE
APPROVED BY	DATE	DESIGNED BY	DATE	DESIGNED BY	DATE	DESIGNED BY	DATE	DESIGNED BY	DATE
CUSTOMER DRAWING				DATE	SIZE	SCALE	REV	G1	
				DATE	SIZE	SCALE	REV	G1	