

4

3

2

1

THIS DRAWING IS UNPUBLISHED. RELEASED FOR PUBLICATION JUNE, 2006.

COPYRIGHT 2006 BY TYCO ELECTRONICS CORPORATION. ALL RIGHTS RESERVED.

LOC	DIST	REVISIONS			
P	LTR	DESCRIPTION	DATE	DWN	APVD
B		ECR-06-013423	13JUN06	JMS	FWK

NOTES:

▲ PACK IN ACCORDANCE WITH AMP SPEC 107-3275

▲ 100 TRAY PACK IN ACCORDANCE WITH AMP SPEC 107-3275

▲ Ag PLATING

4 ELECTRICAL CHARACTERISTICS

FREQUENCY RANGE: DC - 2 GHz
 NOMINAL IMPEDANCE: 75 Ohm
 INSULATION RESISTANCE: 5000 MOhm
 WORKING VOLTAGE: 500 Volts RMS at Sea Level
 DIELECTRIC WITHSTAND VOLTAGE: 1500 Volts RMS Max
 CONTACT RESISTANCE: 1.50 mOhm Max
 CENTRE CONTACT: 0.20 mOhm Max
 OUTER CONTACT: N/A
 VSWR @ xGHz: N/A
 INSERTION LOSS xdb: N/A

5 MECHANICAL CHARACTERISTICS

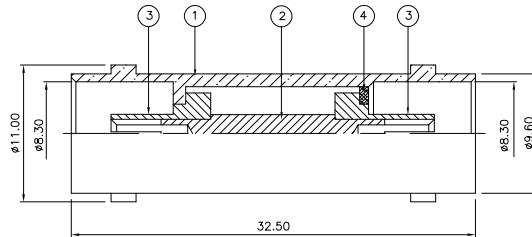
COUPLING RETENTION FORCE: N/A
 CABLE RETENTION FORCE: N/A
 DURABILITY: 500 Cycles Min

6 ENVIRONMENTAL CHARACTERISTICS

OPERATING TEMPERATURE: -65 to +165 DegC

7 FOR TECHNICAL DATA REFER TO YOUR LOCAL TYCO ELECTRONICS SALES OFFICE

8 ALL DIMENSIONS ARE NOMINAL FOR REFERENCE ONLY UNLESS OTHERWISE STATED



QTY	1	1	MATERIAL	DESCRIPTION	ITEM
	1	1	BRASS	SLEEVE	4
	2	2	PTFE	INSULATION	3
	1	1	BRASS	CONTACT	2
	1	1	BRASS	BODY	1
	6--0	1--0	MATERIAL	DESCRIPTION	ITEM

QUANTITY PER ASSY PARTS LIST

THIS DRAWING IS A CONTROLLED DOCUMENT.		DWN	J. SANDWELL	13JUN06	Tyco Electronics Corporation Bideford EX39 4HE
DIMENSIONS: mm		CHK	S. PARLOW	13JUN06	
TOLERANCES UNLESS OTHERWISE SPECIFIED:		APVD	F. WHEELER-KING	13JUN06	
0 PLC ± - 1 PLC ± - 2 PLC ± - 3 PLC ± - 4 PLC ± - ANGLES ± -		NAME	BNC STRAIGHT ADAPTOR J-J 75 OHM		
MATERIAL	SEE TABLE	FINISH			RESTRICTED TO
		PRODUCT SPEC			
		APPLICATION SPEC			
		WEIGHT			
		SIZE	A3	00779	C=1478041
		CAGE CODE			
		DRAWING NO			
		SCALE	NTS		
		SHEET	1 OF 1		
		REV	B		

AMP 1470-19 REV 31MAR2000