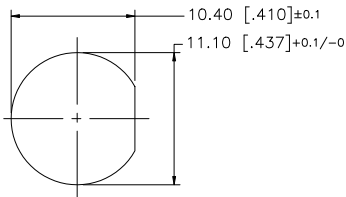
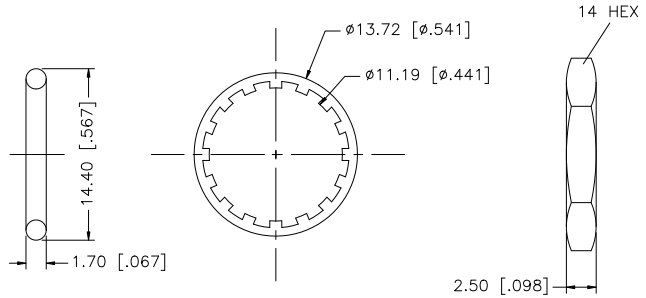
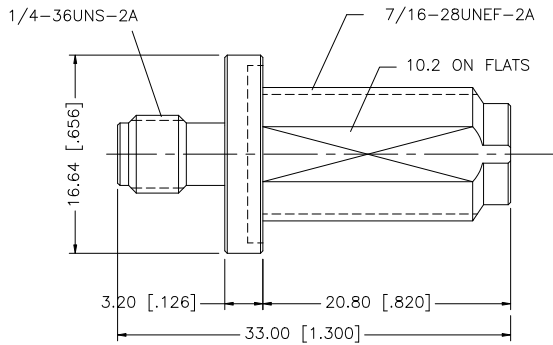


REV.	DATE	ECR NO.	DESCRIPTION
NC	10/14/01	-	INITIAL RELEASE
A	03/26/09	100088	ADD TOLERANCES TO MOUNT HOLE DIMENSIONS



RECOMMENDED MOUNTING HOLE



DESCRIPTION	MATERIAL	FINISH	QTY	DO NOT SCALE DRAWING	APPROVALS	DATE	<h2 style="color: blue; margin: 0;">Amphenol Connex</h2>	
6	HEX NUT	BRASS	NICKEL	1	DRAWN	GRS		<p style="margin: 0;">PART DESCRIPTION</p> <p style="margin: 0; text-align: center;">SMA FEMALE TO TNC BULKHEAD FEMALE ADAPTER</p> <p style="margin: 0;">PART NO.</p> <p style="margin: 0; text-align: center;">242178</p> <p style="margin: 0;">DWG. NO.</p> <p style="margin: 0; text-align: center;">242178.DWG</p> <p style="margin: 0; text-align: right;">REV. A SIZE A SCALE NA</p>
5	LOCK WASHER	PHOS. BRONZE	NICKEL	1	CHECKED			
4	GASKET	SILICONE	RED	1	ISSUED			
3	CONTACT PIN	BER. COPPER	GOLD	1	SHEET	1 OF 1		
2	INSULATOR	PTFE	NATURAL	1	CAD FILE			
1	BODY	BRASS	NICKEL	1	C:/242/242178.DWG			

UNLESS OTHERWISE SPECIFIED DIMENSIONS ARE IN MILLIMETERS; DIMENSIONS IN [] ARE IN INCHES AND FOR CUSTOMER REFERENCE ONLY.

UNLESS OTHERWISE SPECIFIED TOLERANCES FOR MILLIMETERS ARE:
0.5 - 8mm ± 0.20mm
8 - 30mm ± 0.40mm
30 - 120mm ± 0.50mm

UNLESS OTHERWISE SPECIFIED TOLERANCES FOR INCHES ARE:
.020 - .315 = ± 0.007"
.315 - 1.180 = ± 0.015"
1.180 - 4.724 = ± 0.020"