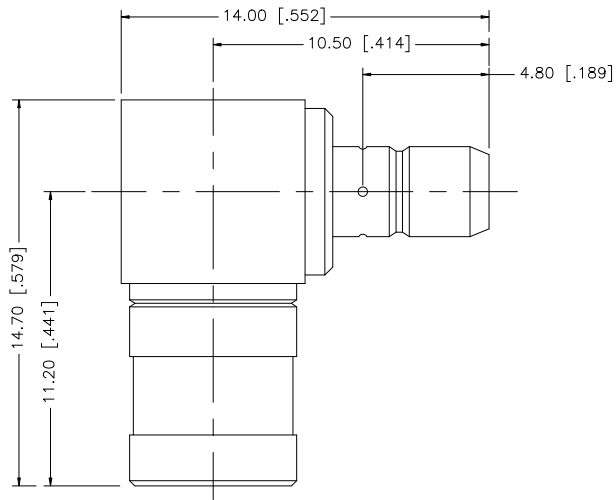


REV.	DATE	DESCRIPTION
NC	09/06/07	INITIAL RELEASE



				APPROVALS	DATE	Amphenol Connex				
8				DRAWN	G.R.S.					09/06/07
7				CHECKED			PART NO. 142248			
6				ISSUED						
5				SHEET	1 OF 1		REV. NC SIZE A SCALE NA			
4				CAD FILE	C:/142/142248.DWG					
3	CONTACT PIN	BER. COPPER	GOLD	1						
2	INSULATOR	TEFLON	NATURAL	1						
1	BODY	BRASS	GOLD	1						
DESCRIPTION MATERIAL FINISH QTY				DO NOT SCALE DRAWING						

UNLESS OTHERWISE SPECIFIED DIMENSIONS ARE IN MILLIMETERS. DIMENSIONS IN [] ARE IN INCHES AND FOR CUSTOMER REFERENCE ONLY.

UNLESS OTHERWISE SPECIFIED TOLERANCES FOR MILLIMETERS ARE:
0.5 - 8mm ± 0.20mm
8 - 30mm ± 0.40mm
30 - 120mm ± 0.50mm

UNLESS OTHERWISE SPECIFIED TOLERANCES FOR INCHES ARE:
.020 - .315 = ± 0.007"
.315 - 1.180 = ± 0.015"
1.180 - 4.724 = ± 0.020"