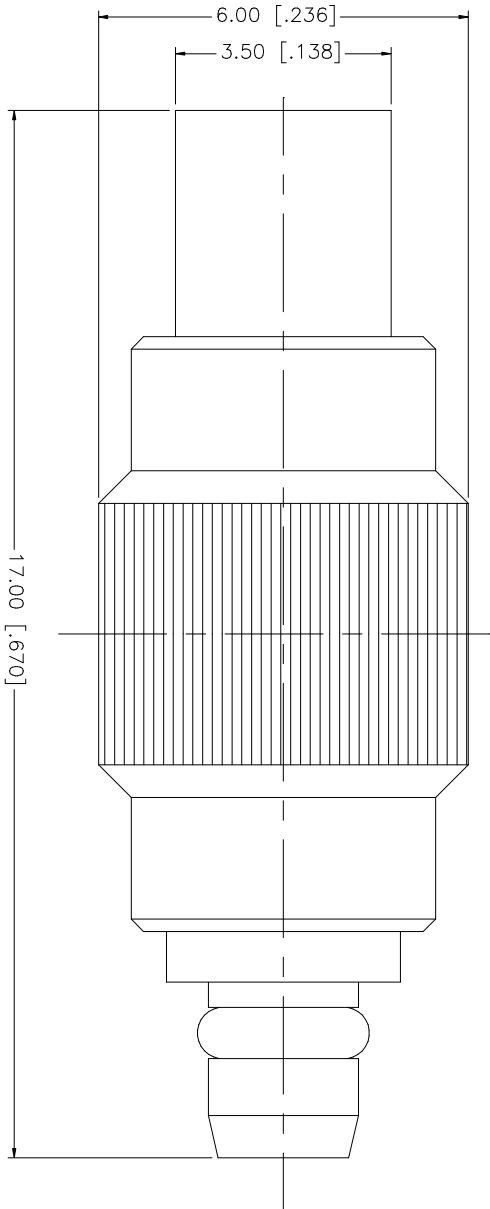


REV.	DATE	DESCRIPTION
NC	01/31/03	INITIAL RELEASE
A	12/20/05	REVISE PART DESCRIPTION



NO.	DESCRIPTION	MATERIAL	FINISH	QTY	UNLESS OTHERWISE SPECIFIED, DIMENSIONS ARE IN MILLIMETERS. DIMENSIONS IN [] ARE IN INCHES AND FOR CUSTOMER REFERENCE ONLY. TOLERANCES FOR MILLIMETERS ARE: 0.5 - 8mm ± 0.20mm 8 - 30mm ± 0.40mm 30 - 120mm ± 0.50mm UNLESS OTHERWISE SPECIFIED, TOLERANCES FOR INCHES ARE: .020 - .315 = ± 0.007" .315 - 1.180 = ± 0.015" 1.180 - 4.724 = ± 0.020"	DO NOT SCALE DRAWING	CAD FILE	DWG. NO.	REV.	SIZE	SCALE
8							APPROVALS	DATE			
7							DRAWN	G.R.S.	12/20/05		
6							CHECKED				
5							ISSUED				
4							SHEET	1 OF 1			
3	CONTACT PIN	BER. COPPER	GOLD	1							
2	INSULATOR	TEFLON	NATURAL	1							
1	BODY	BRASS	GOLD	1							
	DESCRIPTION	MATERIAL	FINISH	QTY							
							PART NO.		262136		
							PART DESCRIPTION		MMCX PLUG TO JACK ADAPTER		
							DWG. NO.		262136.DWG		
							CAD FILE		C:/262/262136.DWG		
							APPROVALS		DATE		
							DRAWN		G.R.S. 12/20/05		
							CHECKED				
							ISSUED				
							SHEET		1 OF 1		
							PART NO.		262136		
							PART DESCRIPTION		MMCX PLUG TO JACK ADAPTER		
							DWG. NO.		262136.DWG		
							CAD FILE		C:/262/262136.DWG		
							APPROVALS		DATE		
							DRAWN		G.R.S. 12/20/05		
							CHECKED				
							ISSUED				
							SHEET		1 OF 1		
							PART NO.		262136		
							PART DESCRIPTION		MMCX PLUG TO JACK ADAPTER		
							DWG. NO.		262136.DWG		
							CAD FILE		C:/262/262136.DWG		

Amphenol Connex

MMCX PLUG TO JACK ADAPTER

262136

262136.DWG

REV. A

SIZE A

SCALE NA