

4

3

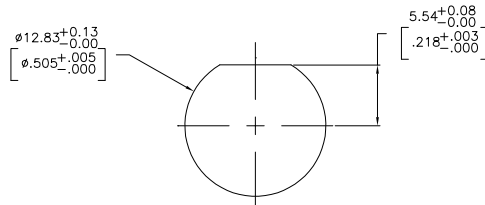
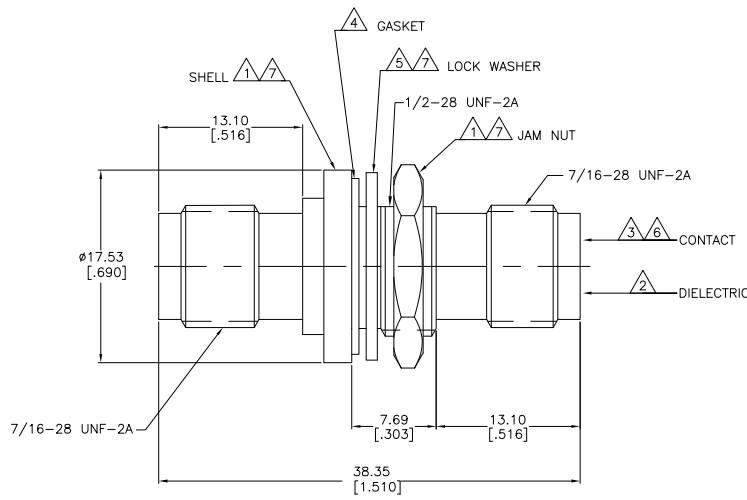
2

1

THIS DRAWING IS UNPUBLISHED. RELEASED FOR PUBLICATION  
 © COPYRIGHT BY TYCO ELECTRONICS CORPORATION. ALL RIGHTS RESERVED.

LOC	DIST	REVISIONS			
F	LTR	DESCRIPTION	DATE	BY	APP'D
AJ	17	D	REVISED PER EC 0514-0470-04	13JAN05	BM JL

- △ BRASS
- △ DELRIN
- △ PHOSPHOR BRONZE
- △ SILICONE RUBBER
- △ STAINLESS STEEL
- △ GOLD PLATE, 0.76µm [.000030] MINIMUM THICKNESS
- △ NICKEL PLATE, 2.54µm [.000100] MINIMUM THICKNESS
- 8. GASKET TO BE RECESSED INSIDE THE MOAT
- 9. MAXIMUM PANEL THICKNESS IS 3.18 [.125]
- 10. ALL DIMENSION FOR ADAPTER ARE REFERENCE ONLY



RECOMMENDED PANEL CUTOUT

221500-1  
PART NUMBER

THIS DRAWING IS A CONTROLLED DOCUMENT.		DRW: MICHAEL E. COWHER CHK: MICHAEL E. COWHER APP: MICHAEL E. COWHER	03-MAR-98 02-APR-98 02-APR-98	<b>Tyco Electronics</b>	Tyco Electronics Corporation Harrisburg, Pa 17105-3608
DIMENSIONS: mm [INCHES]	TOLERANCES UNLESS OTHERWISE SPECIFIED:	NAME: MICHAEL E. COWHER	PRODUCT SPEC:	JACK TO JACK, ADAPTER, BULKHEAD, TNC	
0 P.L.C. ± .010	1 P.L.C. ± .010	APPLICATION SPEC:	SIZE: A2	CAGE CODE: 00779	DRAWING NO: 221500
2 P.L.C. ± .010	3 P.L.C. ± .010	WEIGHT:	RESTRICTED TO:		
4 P.L.C. ± .010	ANGLES ± .010	FINISH:	CUSTOMER DRAWING		SCALE: 4:1 SHEET 1 OF 1 REV D