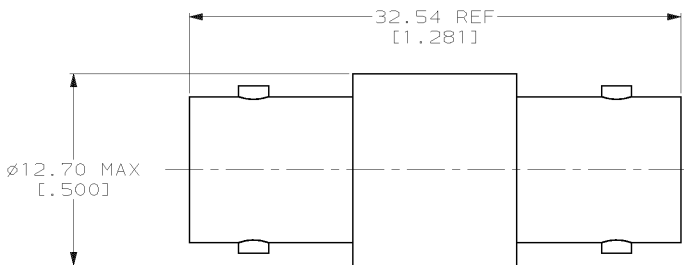


DRAWING MADE IN THIRD ANGLE PROJECTION

THIS DRAWING IS UNPUBLISHED. RELEASED FOR PUBLICATION, 19...  
 © COPYRIGHT 19... BY AMP INCORPORATED. ALL INTERNATIONAL RIGHTS RESERVED.

LOC	DIST	P	F	ZONE	LTR	REVISIONS	DATE	APPD
AJ	16				F	OBSELETE -9 PER 0U20-0072-01	12APR01	MO



1. PART MAY BE INTER-MATED WITH PRODUCT PER MIL-C-39012
2. GOLD PLATING PER MIL-G-45204
3. NICKEL PLATING PER QQ-N-290
4. SILVER PLATING PER QQ-S-365
5. SEE SEPARATE RESTRICTED CUSTOMER DRAWING 221551-9

	2	3	1-221551-0
OBSELETE	2	3	221551-9
OBSELETE	5	-	221551-4
SUPERSEDED BY 221551-3	2	4	221551-3
SUPERSEDED BY 221551-1	4	4	221551-2
	4	3	221551-1
CONTACT FINISH		SHELL FINISH	PART NUMBER

		PART NO	
DO NOT SCALE PRINT. UNLESS SPECIFIED DIMENSIONS IN MM (INCHES) TOLERANCES ON: 2. PLC DEC ± 3. PLC DEC ± ANGLES ±	DR 5-10-91 M.E. COWHER CHK 5-17-91 J.T. LIPPERT APPD 5-24-91 M. PHILLIPS APPD 6-5-91 M.E. COWHER	<b>AMP</b> AMP Incorporated Harrisburg, PA 17105-3608	
MATERIAL -	PRODUCT SPEC -	NAME ADAPTER, FEED THRU, JACK, SERIES BNC	
FINISH 2 3 4	APPLICATION SPEC -	SIZE B	CAGE CODE 00779
	WEIGHT -	DRAWING NO 221551	SHEET 1 OF 1
		SCALE 4:1	

AMP 1470-15 REV 11-89  
 12-APR-01 10:29:06 amp0507200572

CUSTOMER DRAWING