

4

3

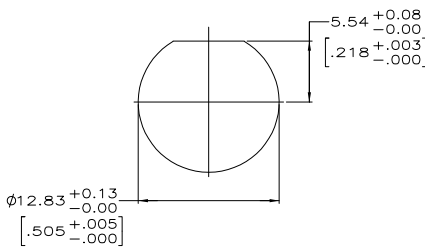
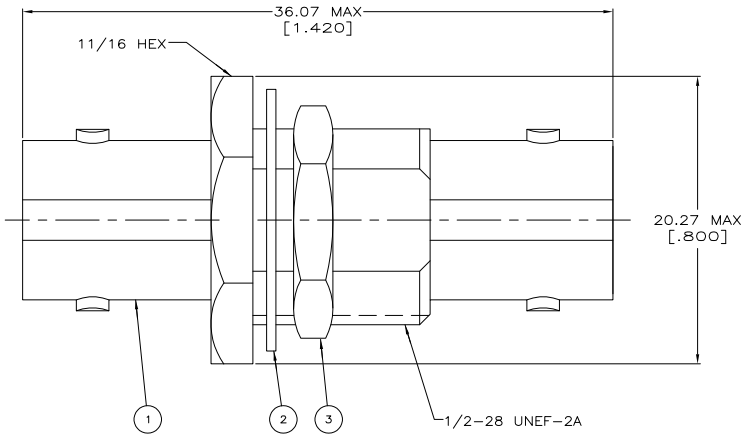
2

1

THIS DRAWING IS UNPUBLISHED. RELEASED FOR PUBLICATION  
 COPYRIGHT BY TYCO ELECTRONICS CORPORATION. ALL RIGHTS RESERVED.

LOC	DIST	REVISIONS			
F	LR	DESCRIPTION	DATE	DWN	APD
AJ	16	REVISED PER ECO-06-012234	31MAY2006	KS	JH

- 1. PARTS PACKAGED UNASSEMBLED
- 2. PANEL THICKNESS = 6.35 [.250] MAX



RECOMMENDED PANEL CUTOUT  
 SCALE 4:1

1-329631-2 ③ JAM NUT QTY=1	1-329632-2 ② LOCK WASHER QTY=1	222118-1 ① JACK ADAPTOR ASSY QTY=1	5222117-1 PART NUMBER
THIS DRAWING IS A CONTROLLED DOCUMENT.			
DIMENSIONS: mm [INCHES] TOLERANCES UNLESS OTHERWISE SPECIFIED: 0 P.L.C. ± .005 1 P.L.C. ± .005 2 P.L.C. ± .005 3 P.L.C. ± .005 4 P.L.C. ± .005 ANGLES ± .5° FINISH: -		DWN: J. ALCORTA 19APR2005 CHK: J. HAVENER 19APR2005 J. LIPPERT 19APR2005 NAME: TYPHOON Electronics Tyco Electronics Corporation Harrisburg, Pa 17105-3608 APPLICATION SPEC: - WEIGHT: - CUSTOMER DRAWING	
SIZE: A2 CASE CODE: 00779 DRAWING NO: C-5222117 SCALE: 5:1 SHEET: 1 OF 1 REV: A		RESTRICTED TO: -	

AMP 1471-9 REV 31MAY2000

31MAY2006 11:24am us026463 \\Us194fp00\data\RF\Prod\_eng\Schrum\Havener\ECO-06-012234\5222117\_1-c.dwg

5222117