

4

3

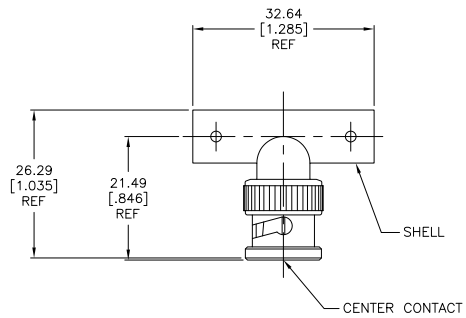
2

1

THIS DRAWING IS UNPUBLISHED. RELEASED FOR PUBLICATION  
 © COPYRIGHT BY TYCO ELECTRONICS CORPORATION. ALL RIGHTS RESERVED.

LOC	DIST	REVISIONS			
F	LNK	DESCRIPTION	DATE	BY	APPD
	U1	REVISED PER ECO-06-018704	18SEP2008	MC	JH
	U2	REVISED PER ECO-09-021826	12SEP09	KK	AEG

- 1 DIELECTRIC : DELRIN/POLYMETHYLPENTENE
- 2 PLUG CENTER CONTACT : BRASS
- 3 PLUG OUTER CONTACT : BRASS
- 4 SHELL : ZINC
- 5 GOLD PLATE, .000015 MINIMUM THICK OVER .000050 MINIMUM THICK NICKEL.
- 6 NICKEL PLATE .,000120 MINIMUM THICK



- 5. INTERMATEABLE WITH PRODUCT PER MIL-C-39012
- 6 GOLD PLATE, .000030 MINIMUM THICK OVER .000050 MINIMUM THICK NICKEL.
- 7 SILVER PLATE .,000200 MINIMUM THICK OVER .000050 MINIMUM THICK NICKEL.
- 8 PHOSPHOR BRONZE
- 9 BERYLLIUM COPPER
- 10 SEE SEPARATE RESTRICTED CUSTOMER DRAWINGS
- 11 SPECIAL PACKAGING: INDIVIDUALLY PACKAGED FOR NETCON.
- 12 BULK PACKAGED: 25 PCS PER BAG
- 13 BULK PACKAGED: 100 PCS PER BAG
- 14 BULK PACKAGED: 5 PCS PER BLISTER PACK
- 15 BULK PACKAGED: 5 PCS PER BOX
- 16 INDIVIDUALLY PACKAGED
- 17 OBSOLETE PARTS: OBSOLETE CIS STREAMLINING PER D.RENAUD/D.SINISI

18	SUPERCEDED BY 413592-2	8	3	2	1-413592-7
19	OBSOLETE	-	-	-	1-413592-6
20	SUPERCEDED	8	3	2	1-413592-5
21	OBSOLETE	8	3	2	1-413592-4
22	OBSOLETE	8	3	2	1-413592-1
23	OBSOLETE	8	3	2	1-413592-0
24	SUPERCEDED BY 5413592-9	8	3	2	413592-9
25	OBSOLETE	8	3	2	413592-8
26	OBSOLETE	8	3	2	413592-6
27	OBSOLETE	8	3	2	413592-4
28	OBSOLETE	8	3	2	413592-2
MATERIAL: JACK CENTER CONTACT		SHELL PLATING		CONTACT PLATING	PART NO

THIS DRAWING IS A CONTROLLED DOCUMENT.		BY J. LIPPERT 6-27-90	Tyco Electronics Corporation	
DIMENSIONS: mm [INCHES]		CHK D. LAMAN 6-27-90	Harrisburg, Pa 17105-3608	
TOLERANCES UNLESS OTHERWISE SPECIFIED:		APP'D D. LAMAN 6-27-90	T-ADAPTER SERIES BNC	
0 PLG ± .01		PRODUCT SPEC 108-12090	-	
1 PLG ± .01		APPLICATION SPEC	-	
2 PLG ± .01		SIZE	A2 00779 C=413592	
3 PLG ± .01		WEIGHT	-	
4 PLG ± .01		FINISH	-	
ANGLES ± .01		CUSTOMER DRAWING	SCALE 2:1 SHEET 1 OF 1 REV U2	