

4

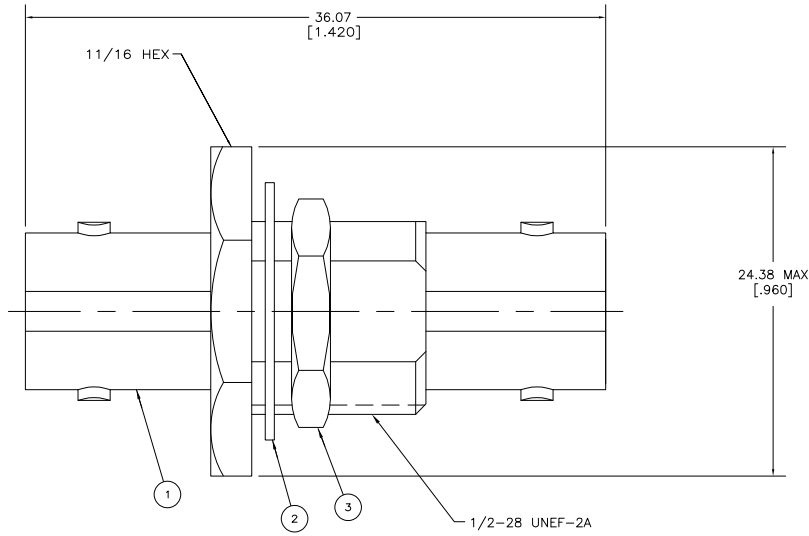
3

2

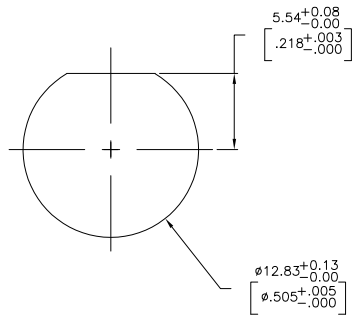
1

THIS DRAWING IS UNPUBLISHED. RELEASED FOR PUBLICATION  
 © COPYRIGHT BY TYCO ELECTRONICS CORPORATION. ALL RIGHTS RESERVED.

LOC	DIST	REVISIONS			
P	LR	DESCRIPTION	DATE	BY	APPD
AJ	16	A	REVISED PER EC 0514-0150-05	22SEP05	BM JL



1. PARTS PACKAGED UNASSEMBLED.
2. PANEL THICKNESS = 6.35 [.250] MAX.



RECOMMENDED PANEL CUTOUT

1-329631-2	1-329632-2	228255-2	5228226-3
1-329631-2	1-329632-2	9-228255-0	5228226-1
③ JAM NUT QTY=1	② LOCK WASHER QTY=1	① JACK ADAPTER ASSEMBLY QTY=1	PART NUMBER

THIS DRAWING IS A CONTROLLED DOCUMENT.

DIMENSIONS: mm [INCHES]	TO MANUFACTURE: 0 P.L.C. ± 1 P.L.C. ± 2 P.L.C. ± 3 P.L.C. ± 4 P.L.C. ± ANGLE ± FINISH	DWG NO. 18AP2005 A. FERNANDEZ-300016 CRK J. HAVENER J. LIPPERT PRODUCT SPEC. APPLICATION SPEC. WEIGHT CUSTOMER DRAWING	Tyco Electronics Corporation Harrisburg, PA 17105-3608 <b>Tyco Electronics</b> JACK TO JACK ADAPTER, BULKHEAD MOUNT, BNC SIZE CAGE CODE DRAWING NO. A2 00779 C-5228226 RESTRICTED TO SCALE 5:1 SHEET 1 of 1 REV A
----------------------------	--	---	---