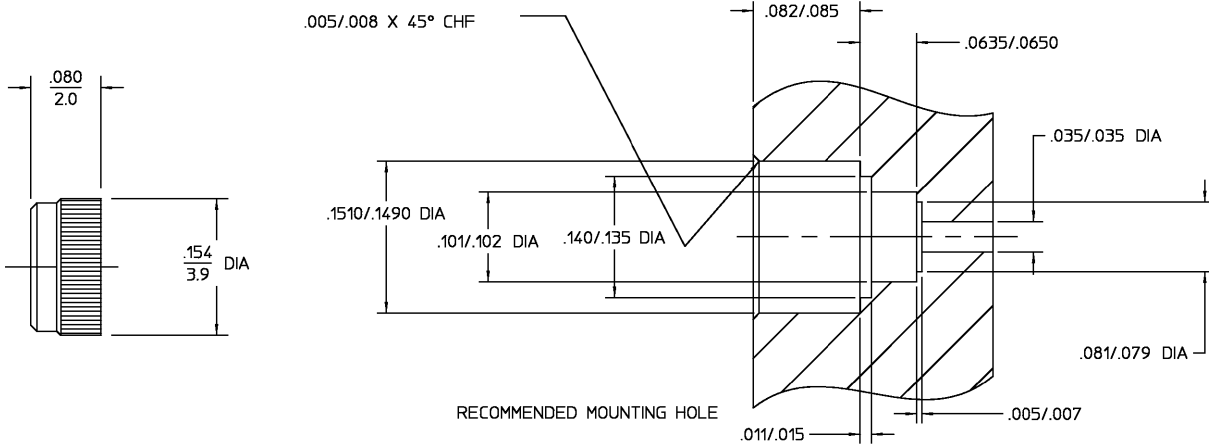


REVISIONS			
REV	DESCRIPTION	DATE	APPROVED
02 <sub>0</sub>	REVISED ECN 96-0048	5/28/96	<i>RAC</i>



HOUSING	STAINLESS STEEL PER ASTM-A484 AND ASTM- A582, TYPE 303	PASSIVATE PER ASTM-A380
COMPONENT	MATERIAL	FINISH
UNLESS OTHERWISE SPECIFIED DIMENSIONS ARE IN INCHES TOLERANCE ON	DRAWN BY <i>BB</i> DATE 7/12/94	AMP Incorporated
FRAC. DEC. ANGLES	CHECKED BY	140 Fourth Avenue Waltham, MA 02451-7599
+ .1/64 + .005 + °	APPROVED BY <i>RAC</i> 7/18/94	
These drawings and specifications are the property of W/A-COM Interconnect Division and shall not be reproduced or copied or used in whole or in part as the basis for the manufacture or sale of item(s) without written permission.	USE ASSY PROCEDURE	TITLE OSMP PRESS-IN SHROUD FULL DETENT
	NO. A.P. 29-007	SIZE B CODE IDENT NO. 26805 2998-5035-02 REV 02 <sub>0</sub>
		SCALE 10=1 SHEET 1 OF 1

.XXX = in  
XX.X = mm

CUSTOMER DRAWING

AMP PART # 1056736-1  
SHEET 1 OF 1 REV A