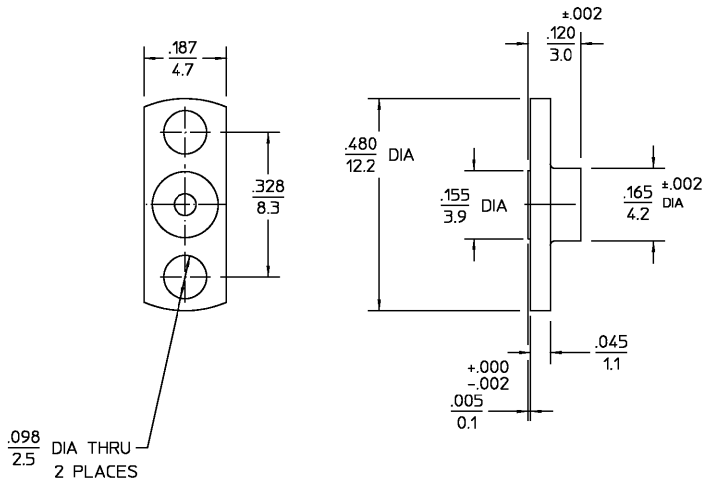


REVISIONS			
REV	DESCRIPTION	DATE	APPROVED
02 ₀	REVISED	10/16/95	DPG 10/19/95



SHROUD	STAINLESS STEEL PER ASTM-A484 AND ASTM- A582, TYPE 303	PASSIVATE PER QQ-P-35
COMPONENT	MATERIAL	FINISH
<small>UNLESS OTHERWISE SPECIFIED DIMENSIONS ARE IN INCHES TOLERANCE ON</small>		
<small>FRAC. DEC. ANGLES ± 1/64 ±.005 ± °</small>		
<small>These drawings and specifications are the property of M/A-COM Incorporated and shall not be reproduced or copied or used in whole or in part as the basis for the manufacture or sale of items without written permission.</small>		
<small>USE ASSY PROCEDURE</small> 408-04752 NO. AP. (29-006)		<small>AMP Incorporated</small> 140 Fourth Avenue Waltham, MA 02451-7599 AMP TITLE OSM SHROUD LIMITED DETENT
<small>DRAWN BY</small> <i>JDavis</i> <small>DATE</small> 03/13/95 <small>CHECKED BY</small> <small>APPROVED BY</small> <i>JDavis</i> 03/13/95		<small>SIZE</small> B <small>CODE IDENT NO.</small> 2998-5028-02 <small>REV</small> 02 ₀ <small>SCALE</small> 5:1 <small>SHEET</small> 1 OF 1

.XXX = in
XX.X = mm

CUSTOMER DRAWING

AMP PART # 1056729-1
SHEET 1 OF 1 REV A