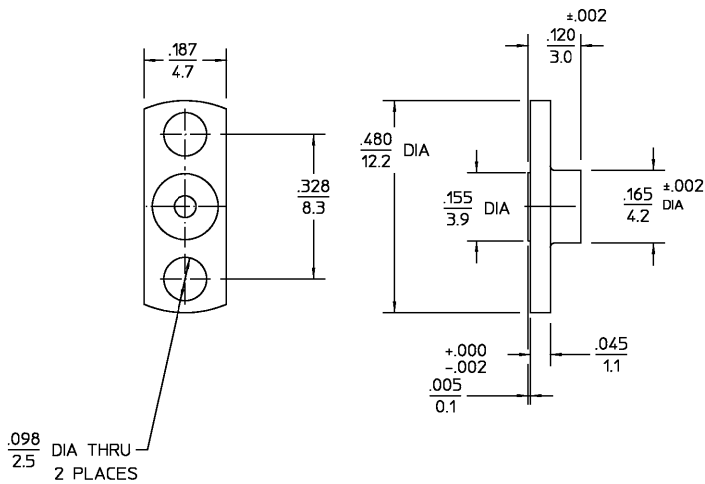


| REVISIONS | | | |
|-----------------|-------------|----------|--------------------|
| REV | DESCRIPTION | DATE | APPROVED |
| 03 ₀ | REVISED | 10/16/95 | <i>[Signature]</i> |



| | | |
|---|--|---|
| SHROUD | STAINLESS STEEL PER ASTM-A484 AND ASTM- A582, TYPE 303 | PASSIVATE PER QQ-P-35 |
| COMPONENT | MATERIAL | FINISH |
| <small>UNLESS OTHERWISE SPECIFIED DIMENSIONS ARE IN INCHES TOLERANCE ON FRAC. DEC. ANGLES ± 1/64 ±.005 ± °</small> | | |
| <small>DRAWN BY: <i>[Signature]</i> DATE: 4/20/92 CHECKED BY: <i>[Signature]</i> DATE: 4/20/92 APP'D BY: <i>[Signature]</i> DATE: 4/21/92</small> | | <small>AMP Incorporated 140 Fourth Avenue Waltham, MA 02451-7599</small> |
| <small>USE ASSY PROCEDURE 408-04752 NO. AP. (29-006)</small> | | <small>TITLE OSMP SHROUD FULL DETENT</small> |
| <small>.XXX = in XX.X = mm</small> | | <small>SIZE: B CODE IDENT NO. 2998-5001-02 REV 03₀ SCALE: 5:1 SHEET 1 OF 1</small> |

CUSTOMER DRAWING AMP PART # 1056721-1 SHEET 1 OF 1 REV A