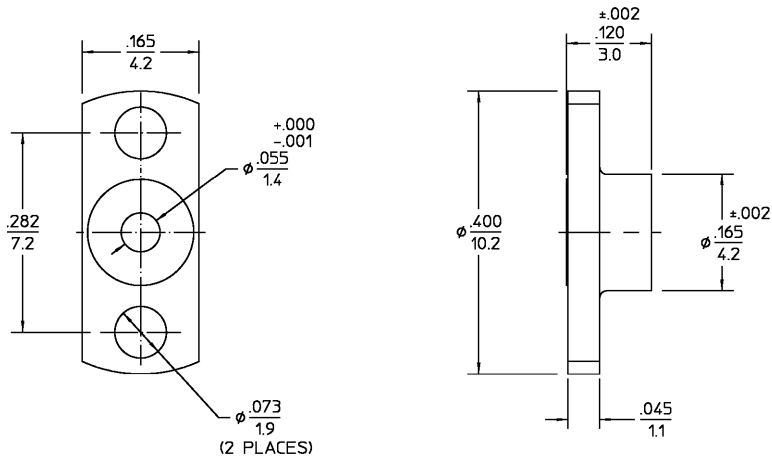


| REVISIONS | | | |
|-----------------|-------------|----------------|-------------------------------|
| REV | DESCRIPTION | DATE | APPROVED |
| 04 ₁ | REVISED | KLE 4-10-97 | <i>[Signature]</i> 4/10/97 |



| | | |
|--|--|---|
| SHROUD | STAINLESS STEEL PER ASTM-A484 AND ASTM- A582, TYPE 303 | PASSIVATE PER QQ-P-35 |
| COMPONENT | MATERIAL | FINISH |
| UNLESS OTHERWISE SPECIFIED DIMENSIONS ARE IN INCHES TOLERANCE ON FRAC. DEC. ANGLES $\pm 1/64$ $\pm .005$ $\pm ^\circ$ | DRAWN BY: <i>[Signature]</i> DATE: 1/13/92 CHECKED BY: MY 1-15-92 APP'D BY: <i>[Signature]</i> 1/15/92 | AMP Incorporated 140 Fourth Avenue Waltham, MA 02451-7599 |
| These drawings and specifications are the property of N/A-COM Incorporated and shall not be reproduced or copied or used in whole or in part as the basis for the manufacture or sale of item(s) without written permission. | USE ASSY PROCEDURE 408-04752 NO. AP. (29-006) | TITLE OSMF FULL DETENT SHROUD |
| | SIZE: B CODE IDENT NO.: 26805 SCALE: 8:1 | 2998-5003-02 SHEET 1 OF 1 |
| | | REV: 04 ₁ |

CUSTOMER DRAWING

AMP PART # 1056724-1
SHEET 1 OF 1 REV A