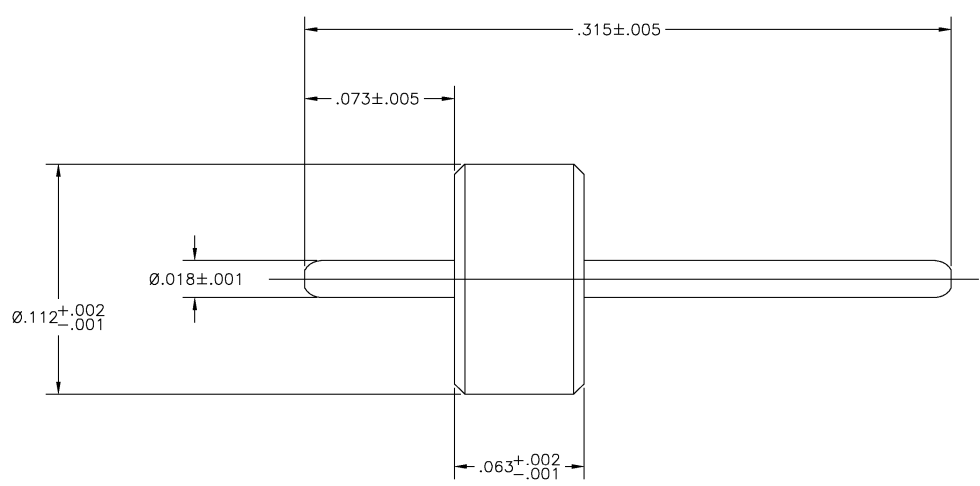


LOC	DIST	REV	DATE	BY	APP'D
HC	00	0	19SEP01	CMH	CMH



1055331-1  
PART NUMBER

BUSHING PIN	IRON-NICKEL-COBALT ALLOY (KOVAR)	GOLD PLATE
BEAD	GLASS	N/A
COMPONENT	MATERIAL	FINISH

DIMENSIONS:		TOLERANCES UNLESS OTHERWISE SPECIFIED:		DRAWING NO.		RESTRICTED TO	
INCHES	0	PLC	± .005	NAME	SIZE	DATE CODE	DRAWING NO.
	1	PLC	± .002	CHRIS HOANG	A2	00779	1055331
	2	PLC	± .001	CHRIS HOANG			
	3	PLC	± .0005	DATE			
	4	PLC	± .0002	DESCRIPTION			
	5	PLC	± .0001	HERMETIC SEAL SUB-ASSY (2098-3251-94)			
	6	PLC	± .00005	APPLICATION SPEC			
	7	PLC	± .00002	WEIGHT			
	8	PLC	± .00001	CUSTOMER DRAWING			
	9	PLC	± .000005				
	10	PLC	± .000002				
	11	PLC	± .000001				
	12	PLC	± .0000005				
	13	PLC	± .0000002				
	14	PLC	± .0000001				
	15	PLC	± .00000005				
	16	PLC	± .00000002				
	17	PLC	± .00000001				
	18	PLC	± .000000005				
	19	PLC	± .000000002				
	20	PLC	± .000000001				
	21	PLC	± .0000000005				
	22	PLC	± .0000000002				
	23	PLC	± .0000000001				
	24	PLC	± .00000000005				
	25	PLC	± .00000000002				
	26	PLC	± .00000000001				
	27	PLC	± .000000000005				
	28	PLC	± .000000000002				
	29	PLC	± .000000000001				
	30	PLC	± .0000000000005				
	31	PLC	± .0000000000002				
	32	PLC	± .0000000000001				
	33	PLC	± .00000000000005				
	34	PLC	± .00000000000002				
	35	PLC	± .00000000000001				
	36	PLC	± .000000000000005				
	37	PLC	± .000000000000002				
	38	PLC	± .000000000000001				
	39	PLC	± .0000000000000005				
	40	PLC	± .0000000000000002				
	41	PLC	± .0000000000000001				
	42	PLC	± .00000000000000005				
	43	PLC	± .00000000000000002				
	44	PLC	± .00000000000000001				
	45	PLC	± .000000000000000005				
	46	PLC	± .000000000000000002				
	47	PLC	± .000000000000000001				
	48	PLC	± .0000000000000000005				
	49	PLC	± .0000000000000000002				
	50	PLC	± .0000000000000000001				

1055331