

4

3

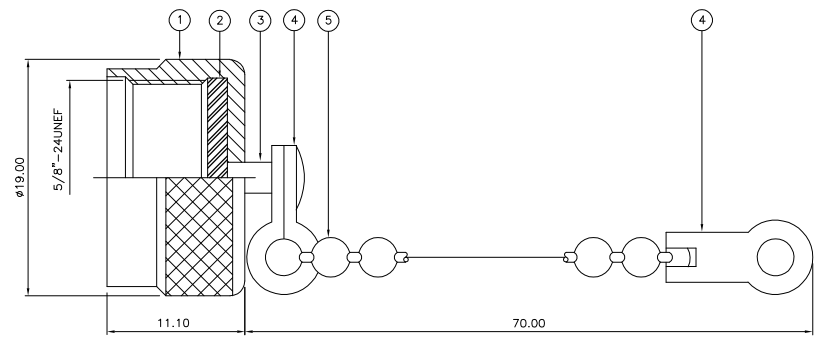
2

1

THIS DRAWING IS UNPUBLISHED. RELEASED FOR PUBLICATION MAY, 2006.
 © COPYRIGHT 2006 BY TYCO ELECTRONICS CORPORATION. ALL RIGHTS RESERVED.

LOC		DIST		REVISIONS			
P	LTR	DESCRIPTION		DATE	DWN	APVD	
	C	ECR-06-012053		23MAY06	JMS	FWK	

- NOTES:
- ⚠ PACK IN ACCORDANCE WITH AMP SPEC 107-3275
 - ⚠ 100 TRAY PACK IN ACCORDANCE WITH AMP SPEC 107-3275
 - ⚠ Ni PLATING
 - ⚠ THIS ITEM MUST BE WHITE
- 5 ELECTRICAL CHARACTERISTICS
- | | |
|-------------------------------|---------------|
| FREQUENCY RANGE: | N/A |
| NOMINAL IMPEDANCE: | N/A |
| INSULATION RESISTANCE: | N/A |
| WORKING VOLTAGE: | N/A |
| DIELECTRIC WITHSTAND VOLTAGE: | N/A |
| CONTACT RESISTANCE: | N/A |
| CENTRE CONTACT: | N/A |
| OUTER CONTACT: | 1.00 mOhm Max |
- 6 MECHANICAL CHARACTERISTICS
- | | |
|---------------------------|----------------|
| COUPLING RETENTION FORCE: | 445N Min |
| DURABILITY: | 500 Cycles Min |
- 7 ENVIRONMENTAL CHARACTERISTICS
- | | |
|------------------------|------------------|
| OPERATING TEMPERATURE: | -65 to +165 DegC |
|------------------------|------------------|
- 8 FOR TECHNICAL DATA REFER TO YOUR LOCAL TYCO ELECTRONICS SALES OFFICE
- 9 ALL DIMENSIONS ARE NOMINAL FOR REFERENCE ONLY UNLESS OTHERWISE STATED



QTY	QTY PER ASSY	MATERIAL	DESCRIPTION	ITEM
1	1	BRASS	CHAIN	5
2	2	STEEL	JOINT	4
1	1	BRASS	RIVET	3
1	1	SILICONE RUBBER	GASKET	2
1	1	BRASS	BODY	1
6--0	1--0	MATERIAL	DESCRIPTION	ITEM

THIS DRAWING IS A CONTROLLED DOCUMENT.		DWN	J. SANDWELL	23MAY06	 Tyco Electronics Corporation Bideford EX39 4HE											
DIMENSIONS: mm		CHK	S. PARLOW	23MAY06												
TOLERANCES UNLESS OTHERWISE SPECIFIED:		APVD	F. WHEELER-KING	23MAY06												
<table border="0"> <tr><td>0 PLC</td><td>± .05</td></tr> <tr><td>1 PLC</td><td>± .02</td></tr> <tr><td>2 PLC</td><td>± .01</td></tr> <tr><td>3 PLC</td><td>± .01</td></tr> <tr><td>4 PLC</td><td>± .01</td></tr> <tr><td>ANGLES</td><td>± .01</td></tr> </table>		0 PLC	± .05	1 PLC		± .02	2 PLC	± .01	3 PLC	± .01	4 PLC	± .01	ANGLES	± .01	NAME	
0 PLC	± .05															
1 PLC	± .02															
2 PLC	± .01															
3 PLC	± .01															
4 PLC	± .01															
ANGLES	± .01															
MATERIAL SEE TABLE		FINISH		—												
—		WEIGHT		—												
—		SIZE		A3 00779 C=1337639												
—		APPLICATION SPEC		—												
—		RESTRICTED TO		—												
—		CUSTOMER DRAWING		SCALE NTS SHEET 1 OF 1 REV C												