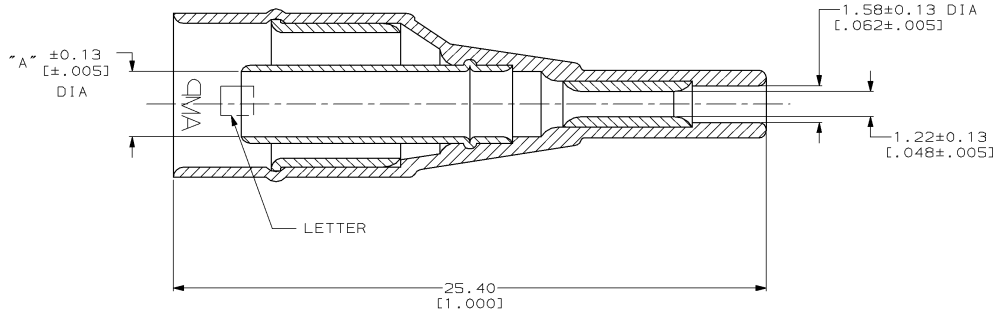
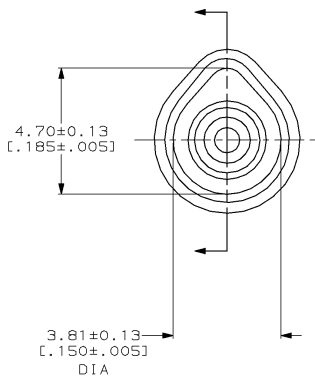


THIS DRAWING IS UNPUBLISHED. RELEASED FOR PUBLICATION  
 © COPYRIGHT 19 BY AMP INCORPORATED. ALL INTERNATIONAL RIGHTS RESERVED.

| LOC | DIST | P | F | ZONE | LTR | DESCRIPTION                          | DATE     | APPD |
|-----|------|---|---|------|-----|--------------------------------------|----------|------|
| AJ  | 16   |   |   |      | H   | REDWN & REV PER AJ-6056              | 02/05/93 | JPD  |
|     |      | ✓ | ✓ |      | J   | REV PER 0220-0149-93                 | 20/06/93 | BMW  |
|     |      |   |   |      | K   | OBSOLETE 1-329413-0 PER 0220-0369-96 | 6-14-96  | JG   |

- ① MATERIAL:  
 INNER FERRULE: BRASS PER MIL-C-50  
 OUTER FERRULE: COPPER PER QQ-C-576  
 SPLICE FERRULE: COPPER PER QQ-C-576  
 MOLDING: NYLON (COLOR: VIOLET)
- ② FINISH  
 INNER FERRULE: TIN PL PER MIL-T-10727  
 OUTER FERRULE: TIN PL PER MIL-T-10727  
 SPLICE FERRULE: TIN PL PER MIL-T-10727
- ③ MATERIAL:  
 INNER FERRULE: BRASS PER MIL-C-50  
 OUTER FERRULE: COPPER PER QQ-C-576  
 SPLICE FERRULE: COPPER PER QQ-C-576  
 MOLDING: NYLON (COLOR: BLUE)



| WEIGHT  | LETTER | "A" DIM     | PRIMARY INSULATION DIA RANGE | PART NUMBER |
|---------|--------|-------------|------------------------------|-------------|
| .029 OZ | F      | 2.03 [.080] | 1.65-2.03 [.065-.080]        | 1-329413-0  |
| .030 OZ | A      | 1.78 [.070] | 1.14-1.65 [.045-.065]        | 329413      |

| PART NO  |  |                            |           |
|--|--|----------------------------|-----------|
| DO NOT SCALE PRINT.<br>UNLESS SPECIFIED<br>DIMENSIONS IN mm [INCHES]<br>TOLERANCES ON:<br>2 PLC DEC ± 0.20 [.008]<br>3 PLC DEC ±<br>ANGLES ± - |  | DR 02/05/93<br>J.DAVIS     |           |
| MATERIAL   |  | CHK 02/05/93<br>G.MICHAEL  |           |
| FINISH   |  | APPD 02/05/93<br>G.MICHAEL |           |
| APPLICATION SPEC   |  | SIZE                       | CAGE CODE |
| WEIGHT   |  | SCALE                      | SHEET     |
| SEE TABLE  |  | NTS                        | 1 OF 1    |

**AMP** AMP Incorporated  
 Harrisburg, PA 17105-3608

CONN, COAX, RF  
 TERMASHIELD  
 PRE INSULATED

DRAWING NO  
**329413**

CUSTOMER DRAWING

THIS DRAWING IS A CONTROLLED DOCUMENT FOR AMP INCORPORATED. IT IS SUBJECT TO CHANGE AND THE CONTROLLING ENGINEERING ORGANIZATION SHOULD BE CONTACTED FOR THE LATEST REVISION.