

4

3

2

1

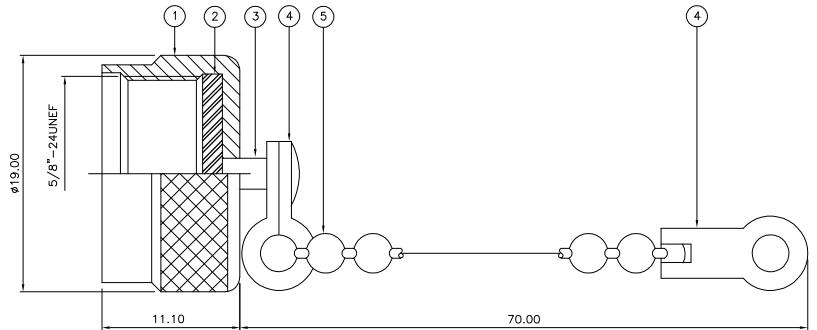
THIS DRAWING IS UNPUBLISHED. RELEASED FOR PUBLICATION AUGUST, 2006.

© COPYRIGHT 2006 BY TYCO ELECTRONICS CORPORATION. ALL RIGHTS RESERVED.

LOC	DIST	REVISIONS			
P	LTR	DESCRIPTION	DATE	DWN	APVD
B		ECR-06-018891	23AUG06	JMS	FWK

NOTES:

- ⚠ PACK IN ACCORDANCE WITH AMP SPEC 107-3275
- ⚠ 100 TRAY PACK IN ACCORDANCE WITH AMP SPEC 107-3275
- ⚠ Ag PLATING
- ⚠ THIS ITEM MUST BE WHITE
- 5 ELECTRICAL CHARACTERISTICS
 - FREQUENCY RANGE: N/A
 - NOMINAL IMPEDANCE: N/A
 - INSULATION RESISTANCE: N/A
 - WORKING VOLTAGE: N/A
 - DIELECTRIC WITHSTAND VOLTAGE: N/A
 - CONTACT RESISTANCE: N/A
 - CENTRE CONTACT: N/A
 - OUTER CONTACT: 1.00 mOhm Max
- 6 MECHANICAL CHARACTERISTICS
 - COUPLING RETENTION FORCE: 445N Min
 - DURABILITY: 500 Cycles Min
- 7 ENVIRONMENTAL CHARACTERISTICS
 - OPERATING TEMPERATURE: -65 to +165 DegC
- 8 FOR TECHNICAL DATA REFER TO YOUR LOCAL TYCO ELECTRONICS SALES OFFICE
- 9 ALL DIMENSIONS ARE NOMINAL FOR REFERENCE ONLY UNLESS OTHERWISE STATED



QTY	QTY PER ASSY	PARTS LIST	ITEM
1	1	BRASS	CHAIN
2	2	STEEL	JOINT
1	1	BRASS	RIVET
1	1	SILICONE RUBBER	GASKET
1	1	BRASS	BODY
6--0	1--0	MATERIAL	DESCRIPTION
			ITEM

THIS DRAWING IS A CONTROLLED DOCUMENT.		DWN J.SANDWELL 23AUG06	Tyco Electronics Corporation Bideford EX39 4HE	
DIMENSIONS: mm		CHK S.PARLOW 23AUG06	NAME TYPE 'N' PLUG DUST CAP AND CHAIN	
TOLERANCES UNLESS OTHERWISE SPECIFIED:		APVD E.WHEELER-KING 23AUG06	SIZE CAGE CODE DRAWING NO RESTRICTED TO	
0 PLC ± -		PRODUCT SPEC	A3 00779 C-1478230	
1 PLC ± -		APPLICATION SPEC	SCALE NTS SHEET 1 OF 1 REV B	
2 PLC ± -		WEIGHT	CUSTOMER DRAWING	
3 PLC ± -				
4 PLC ± -				
ANGLES ± -				
MATERIAL SEE TABLE		FINISH -		